



FALL 2016

THOMAS

ANNUAL REPORT & MAGAZINE



THOMAS

Thank you for the generous scholarship!

- 6 **Scholarships Drive Student Success**
 Scholarships make a difference to so many of our deserving students. Meet just a few of them and see why Thomas is the perfect place for them.

- 12 **Trustee Profile**
 Meredith Jones is new to the Thomas Board - see why she came to Thomas.

- 14 **Catching Up with Dr. Nelson Madore**
 Catch up with beloved former teacher Dr. Nelson Madore. Dr. Madore retired from Thomas in 2009 - see what he is up to now.

- 24 **Annual Report FY '16**
 Thank you for your contributions and support of Thomas students.

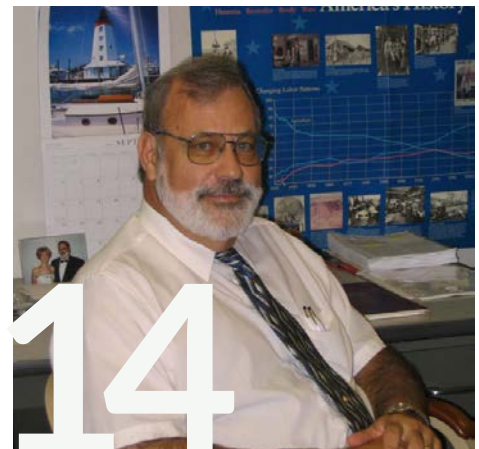
- 38 **Snapshots of the Past Year**
 Thomas celebrates milestones from the past year.

On the cover:

Lunder Scholarship recipient Allyson Clary '17 is excited to finish her degree in Forensic Psychology. The funding she receives makes her education possible.

This year's Lunder Scholars Golf Invitational, held at Belgrade Lakes Golf Club, exceeded last year's fundraising by 32% - the most ever raised at this event.

To see images and read about the event, see page 36.



- 5 **Letter from the President**
- 16 **Class Notes**
- 22 **In Memoriam**

Our Holiday Gift to You!

Janet's Pumpkin Whoopie Pies

Using an electric mixer, blend well for 2 minutes:

- 1 ½ cups canned pumpkin
- 2 large eggs
- 2 cups packed brown sugar
- 1 cup vegetable oil
- 2 tbsp. molasses

Add and mix until incorporated:

- 1 tsp. salt
- ½ tsp. each of ground ginger, ground cloves, and cinnamon
- ¼ tsp. nutmeg
- 1 tsp. baking powder
- 1 tsp. baking soda

Add 3 cups flour to the wet ingredients and beat until well combined, about 1 minute. Using a ¼ cup measure, drop batter onto baking sheets lined with parchment paper. Cookies should be 2" apart, making 2 dozen. Bake 10-12 minutes at 375 degrees. Remove from oven and transfer to rack to cool.

For the filling, stir 1 tbsp. unflavored gelatin and 2 tbsp. cool water in a small bowl. Set aside.

Using an electric mixer, whip together 1 stick unsalted, softened butter and 8 oz. cream cheese on high until fluffy. Add 1 ½ cups powdered sugar, blending well.

Heat gelatin and water over med-low heat in a saucepan, stirring to dissolve the gelatin. Stir into butter and sugar mixture; add remaining 1 ½ cups powdered sugar, plus 1 tsp. ground ginger. Blend well.

Spread flat side of the cookies with 2 tbsp. of filling. Top with remaining cookies and serve. Makes 1 dozen.



Special thanks to Janet Wilkie of Sodexo for sharing this beloved recipe with the Thomas family.



www.thomas.edu

EDITOR

Jennifer Buker

MANAGING EDITOR

Shonna Humphrey

COPY EDITORS

Bonnie Buckmore '13

Shonna Humphrey

MacKenzie Riley

Merlene Sanborn

CONTRIBUTING WRITERS

Erin Baltes

Jennifer Buker

Shonna Humphrey

Bob Moore '79

MacKenzie Riley

DESIGN

Jennifer Buker

LETTERS AND NEWS ITEMS WELCOME

The *Thomas Magazine* is published three times per year by Thomas College. Signed letters may be sent to the editor at Thomas College, 180 West River Road, Waterville, ME 04901 or e-mailed to pr@thomas.edu. Letters and news items may be edited for length and style.

MISSION

Thomas College prepares students for success in their personal and professional lives, and for leadership in their communities.

Board of Trustees

Board Co-Chairs

Conrad L. Ayotte '77, H'98

Todd D. Smith '92, M.B.A. '99

First Vice-Chair

Douglas L. Cutchin H'09

Second Vice-Chair

Brian M. Bernatchez '88

Secretary/Clerk of the Corporation

Kenneth P. Viens

Clifford C. Abbott, Jr.

Cary Olson Cartwright

Jim Doyle

William L. Dubay '72

Dr. Katherine Haley

Charles "Wick" Johnson

Meredith Jones

Laurie G. Lachance M.B.A. '92

Gregory Piper

Dorcas B. Riley

H. Allen Ryan H'08

William J. Ryan, Jr.

Howard E. Sevey

Kelley B. Shimansky '89

Richard F. Spellman M.S. '80

Trustees Emeriti

Edwin P. Carboni

James Hennigar H'03

Susan B. Lavenson H'94

Susan S. Roche

Paul Schupf H'05

President's Council

President

Laurie G. Lachance M.B.A. '92

Provost

Dr. Thomas Edwards

Executive Vice President

Bernie Ouellette '92, M.B.A. '99

Senior Vice President and CFO

Beth Gibbs M.B.A. '93, P'12

Senior Vice President of Advancement

Bob Moore '79

Vice President of Enrollment Management

Jonathan Kent

Vice President of Information Services and CIO

Christopher Rhoda '88, M.B.A. '89

Vice President of Student Affairs

Lisa Desautels-Poliquin

Vice President of Student Success

Debbie Cunningham

Director of Strategic Initiatives

Mikaela Ziobro M.S. '15



Dear Thomas family,

It is a very exciting time of the year at Thomas, and I am pleased and proud to share this combined alumni magazine and annual report! We had many accomplishments this year, and I hope you enjoy reading about all that is happening here on campus. Better yet, please stop by for a visit! Thomas is vibrant, growing, and thriving—and I invite you to experience it yourself.

From a financial perspective, Thomas has, once again—and for 27 consecutive years—closed our books well in the black. Thomas has also demonstrated record levels of alumni giving, with 685 graduates donating – an increase of more than 15% over last year – and a new participation rate high, exceeding 9%. This includes the first annual Day of Giving, which raised \$95,185 from 324 donors—including 123 NEW donors—in a SINGLE DAY! Thank you to the active, engaged alumni who made this achievement possible.

In addition to being philanthropic, our alumni have developed many creative, interesting, and rewarding careers. We are proud of their professional achievements, their representation of Thomas, and their willingness to pay this success forward by contributing to a positive experience for current students. It is exciting to watch all the good our alumni continue to do for their communities.

This year we celebrated the Lunder Family Foundation's generous contribution to establish the Center for Innovation in Education. With the Center for Innovation in Education, we position Thomas as a leader in proficiency-based education, integrating the arts into a focus on science, technology, engineering, and math and creating an innovative Educational Design Center. We also hosted a series of professional development events to share our understanding with other Maine educators.

Our Student Success Center continues to grow, with a continued

focus on retaining students and improving their academic progress and graduation rates. To this end, we received a \$1.1 million TRiO grant from the U.S. Department of Education for student support services. This money provides a significant level of new staffing and programming to help our students succeed.

We inducted five new trustees, experienced another year of record enrollment, and saw the highest graduation rates in Thomas's history. Students are actively seeking the Thomas experience, and even with the recent construction of Hinman Hall, this interest has created a good problem to have: campus housing is full.

To help foster the total student experience and build traditions, Thomas continued the Dirty Dog Mud Run this year, as well as the Terrier Tee-Off alumni golf outing, which raised money for student activities. Once again, the Career and Professional Development Office hosted the largest-ever Career Fair, with a record number of employers present. We launched the Thomas Cup, where teams of high school students compete in a number of technology-based challenges, including cyber defense, gaming, computer science, and crime scene investigation.

And once again, we raised a record amount of scholarship funds at the annual Lunder Scholars Golf Invitational. Continuing with the golf fun, we carried forward the Golf Guarantee to help our students learn a game that could someday enhance their career success.

We are proud, developing, maturing in quality, and innovating. Again, I invite you to visit our campus and see for yourself, and to stop by my office when you do! Thank you for your support. Together, all things are possible.

Sincerely,

Laurie G. Lachance, M.B.A. '92



Scholarships Drive Student Success

By Shonna Humphrey & MacKenzie Riley

If enrolling in college and making it to graduation is a journey, affordability can be a road block.

At Thomas, thoughtful and generous donors help reroute students who encounter that challenge, getting them back on track via a variety of scholarships. Some scholarships honor alumni, and some support students pursuing a particular career path. Some are awarded annually, and some are only awarded when a student exhibits unique qualities. Often, these scholarships were established to memorialize a person whose character made a significant imprint on the Thomas community.

Last year, Thomas disbursed more than 200 scholarships, totaling more than \$300,000.

Here are just a few of the stories contributing to that generosity.

Bernard Osher Scholarship

Bernard Osher, a patron of education and the arts, started The Bernard Osher Foundation in 1977 to improve quality of life through support for higher education and the arts. A native of Biddeford, ME, and a graduate of Bowdoin College, Osher has built a successful career in business. As a result of his success, both in business and philanthropy, Bernard Osher has been affiliated with a number of charitable and nonprofit boards. Today, Maine organizations that align with the Foundation's work continue to benefit from his generosity.

At Thomas, the Bernard Osher Scholarship is awarded to students in their second year who successfully complete Thomas's EDGE program.

Bingham Scholars

The Betterment Fund was created through the will of the late William Bingham, a resident of Bethel, who died in 1955. Mr. Bingham was a self-effacing philanthropist with an abiding interest in education and the improvement of health services in the State of Maine. Since Mr. Bingham's death, the Betterment Fund has established scholarships at several Maine colleges, including Thomas.

Charles P. Ryan Memorial Scholarship

Charlie Ryan graduated from Thomas in 1977 and was a beloved star of the basketball team. Prior to attending Thomas, Charlie played high school basketball at Power Memorial Academy in New York—the same high school attended by Kareem Abdul-Jabbar. He was recruited to Thomas by then-coach Dick Meader and played from 1972 to 1976.

Throughout his career at Thomas and afterwards, Ryan served as a role model for young basketball players in Maine and Queens, New York. He was actively involved with the Pine Tree Basketball Camp and other camps around the State of Maine. According to Meader, Ryan's name was synonymous with summer basketball in Maine. Boys and girls who attended basketball camps in Maine during the 70s, 80s, and 90s knew Charlie Ryan's name.

He also taught at schools in New York City. He was very reflective on his experiences growing up in a low-income housing project and then teaching students from similar housing projects later in life.

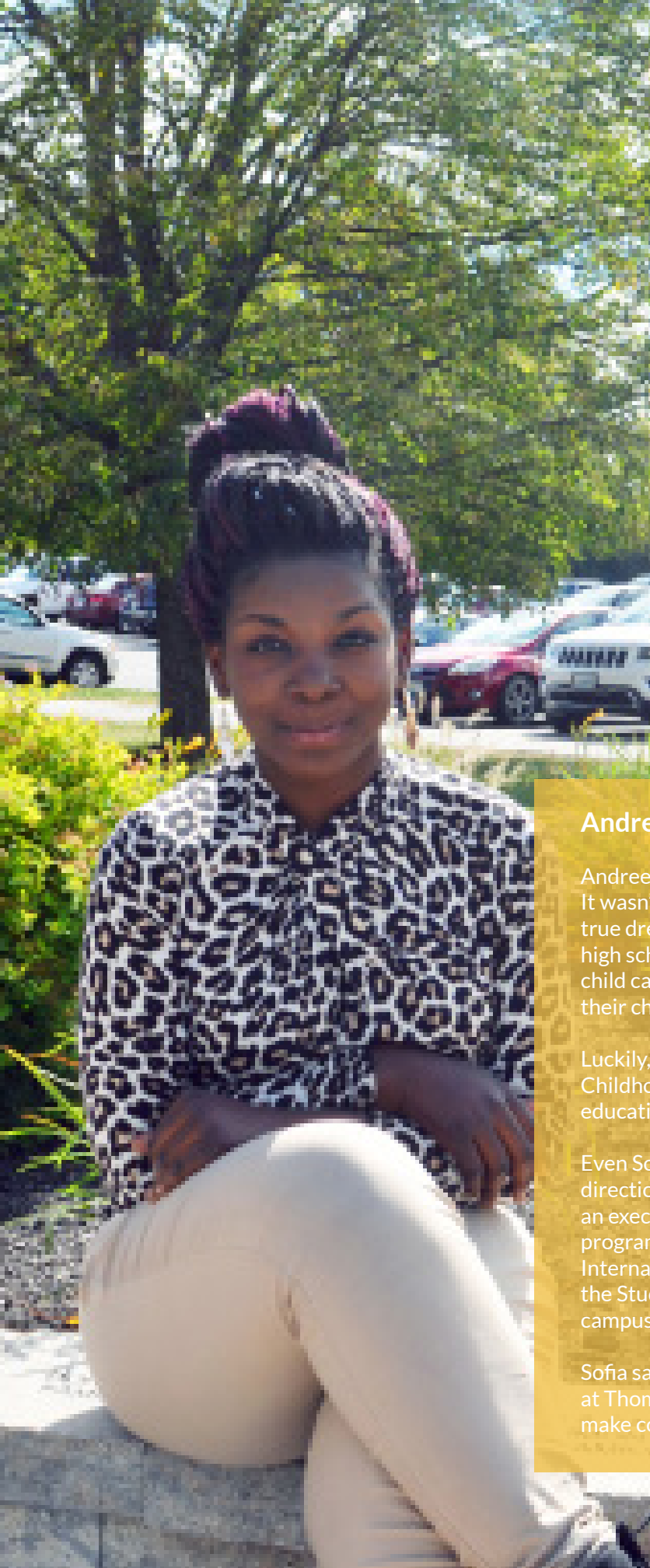
Though Charlie passed away on Christmas Day 1995, he is remembered both in the Thomas Athletic Hall of Fame and at an annual men's basketball tournament named in his honor.



Nick Fortin, Bernard Osher Scholar

Nick Fortin '19 from Standish says that without scholarships, he would not have been able to attend Thomas College. A Management major and International business minor, Fortin is involved with philanthropy projects through the Kappa Delta Phi fraternity on campus.

Nick is happy he found a home at Thomas. "I like Thomas because of the small classes, small community, and everybody is very nice on campus. And it's helped me grow into a better person. I have more confidence than ever."



The Francis F. Bartlett, Jr. Scholarship Fund

Frank F. Bartlett, Jr. served Thomas longer than any other trustee, joining the Board in 1977 and remaining active until his passing in 2003. He saw the College through some of its most difficult times and was there to witness its greatest successes. Throughout his time on the Board, Frank was quiet, thoughtful, decisive and generous. He made many friends both on and off the Thomas campus and quietly helped numerous young adults make the choice to attend college, often helping them financially.

Frank received an M.B.A. from the University of Pennsylvania's Wharton School and was treasurer and president of Boothby & Bartlett Company in Waterville. He devoted himself to community affairs, serving on the boards of many local institutions.

Already Thomas's largest donor while alive (and honored with the Bartlett Hall residence), upon his death, he left the College more than \$3.5 million in endowed scholarship support.

Andree Sofia, Francis F. Bartlett, Jr. Scholar

Andree Sofia '18 always knew she wanted to work with children. It wasn't until she was searching for colleges that she realized her true dream was to build her own organization to help children. "In high school, I worked with single parents who had trouble finding child care," she recalls. "I wanted to help these single parents and their children."

Luckily, she found Thomas, where she now majors in Early Childhood Management. "I can pair business with my love of education to create my own organization and solve this problem."

Even Sofia's efforts outside the classroom point her in that direction; she is gaining experience in teamwork and leadership as an executive council member for the Jobs for Maine's Graduates program on campus, a singer in the Music Club, the secretary of the International Club, a student ambassador, a work-study student in the Student Affairs Office, and an employee at the Dog Pound on campus.

Sofia says that her short time at Thomas has already paid off. "Being at Thomas has helped me become a leader, grow into myself, and make connections with other people."

Johnny Swan, Lunder Scholar

Johnny Swan '17 says the Thomas College community has become his extended family. "We all look out for each other on and off campus," he says. "Everyone from our President and professors to the Sodexo workers and custodial staff are friendly, welcoming individuals."

A Sport Management major, Swan says he has grown a lot since first coming to Thomas. "In the classroom, I have gained so much knowledge about my field. And, with the continuous help and support of the Alumni and Career Services office, I have been able to get out and grow in professional settings through a few incredible internship experiences."

Swan is the Vice President of the Future Business Leaders of America-Phi Beta Lambda Club and works as the Student Intramural Coordinator at the Alfond Athletic Center on campus.

Swan says without scholarships, he wouldn't be as successful. "My Lunder scholarship, coupled with others that I have received during my time at Thomas, has been key to helping me attend Thomas."



H. Allen Ryan Scholarship

H. Allen Ryan is a longstanding member of the Thomas College Board of Trustees and the former owner and president of PFG NorthCenter Food Service Corporation in Augusta. Allen is past president of the Board of Directors of the Augusta Board of Trade, and he serves on the boards of the Friends of the Cobbossee Watershed and the Guadalupe Center of Immokalee in Florida, which serves more than 600 immigrant children with pre-and afterschool programs. He recently retired from his role on the board at his alma mater, Bowdoin College.

"One of my areas of great satisfaction is seeing first-generation Maine kids graduate from Thomas," says Allen. "That is why my wife Dianne and I have invested in funding a scholarship that helps to make this happen."

He adds, "Commencement is one of my favorite days of the year, as so many young men and women make their families proud. If the Ryan Scholarship Fund can play a small role in this, I am very happy."

Together, Allen and Dianne have contributed to the H. Allen Ryan baseball field and the field house portion of the Harold Alfond Athletic Center. In addition, the H. Allen Ryan School of Business is named in his honor.

Lunder Scholarship

The Lunder Foundation is a private foundation established in 1998 by Peter and Paula Lunder. It supports educational, arts, and health care organizations. Prior to founding Kenilworth, Inc., Peter Lunder was the Co-chairman, President, and Chief Executive Officer of Dexter Shoe Company, a family business that was acquired by Berkshire Hathaway in 1993.

In 2002, because of their strong commitment and belief in higher education for Maine students, Peter and Paula Lunder funded the Lunder Scholars Endowed Fund at Thomas. The annual Thomas College Lunder Golf Invitational generates additional support for the fund. Since its inception, the Lunder Scholars Endowment Fund has provided nearly \$400,000 through 217 scholarships.

Maine Bankers Association's Higher Education Assistance Fund

The Maine Higher Education Assistance Foundation was established in the 1950s to support a guarantee fund for student loans. MHEAF is administered by the Maine Bankers Association, which established the scholarship program in 1990. The founders included a wide range of banks, businesses, community organizations, and individuals. In 1990, the MHEAF trustees, seeking to continue the original intent of the founding members, began a scholarship program to support the aspirations of bright, talented students in Maine.

Nina-Lee Warnick Memorial Award

Based entirely upon the student's contributions of time and energy to Thomas and the demonstration of the highest standards of citizenship in the student community, the Nina-Lee Warnick Memorial Award represents recognition by other students, by faculty, and administrators of exceptional qualities of integrity, concern for others, and interest and leadership in campus affairs. Nina-Lee, who graduated in 1974 and 1976, died tragically in 1981. The award is given annually to a deserving student who best exemplifies the personality traits of sincerity and inspiration for the College that she possessed.

Margaret Marnet Endowment

In 2001, the Margaret S. Marnet Scholarship was established in memory of Martha Spann's mother. Martha, who passed away in 2011, was the wife of longtime Thomas President George Spann, who served at the College's helm from 1989 to 2013. Earnings from the endowed scholarship fund are granted to a well-qualified and deserving student, with preference for a student who has declared him or herself an emancipated minor.

Sebasticook Valley Federal Credit Union Scholarship

This scholarship benefits full-time undergraduate students, with preference for students from the areas served by the Sebasticook Valley Federal Credit Union: Pittsfield, Newport, Corinna, Burnham, Detroit, Dixmont, Etna, Hartland, St. Albans, Stetson, Palmyra, Plymouth, Cambridge, Dexter, Exeter, Garland, Harmony, or Ripley. Credit Union President Jim Lemieux – himself a three-time Thomas alum – says of the scholarship, "We contribute because it's important that the Maine economy have an educated workforce. We are also committed to the communities that we serve and feel that these scholarships are an important part of that effort."

Rebecca Boyce, Sebasticook Valley Federal Credit Union Scholar

Rebecca Boyce graduated from Thomas in the spring. Today, she uses her Thomas degree to help people with disabilities obtain careers.

"Thomas helped me to gain great people skills," said Boyce. "My degree in English helps with effective communication and report writing – and my degree in Psychology helps with having a better understanding of the various diagnoses that I work with."

Boyce says her time at Thomas helped her to become a more well-rounded person. "I gained insight on the content of both of my majors, plus so much more within the various electives that were offered and the great professors and fellow students I worked with. I felt prepared to take on a career after my time at Thomas."

Boyce proudly notes that scholarships allowed her to succeed, including the scholarship she received from the Sebasticook Valley Federal Credit Union.





Kelsey Dubay, Mitchell Pioneer Scholar Award

Kelsey Dubay '19 was recently recognized by the Mitchell Institute for demonstrating "great promise in terms of citizenship, scholarship, and perseverance." Kelsey received a Pioneer Scholar Award – which she chose to utilize at Thomas.

A first-year Thomas student studying Accounting and Financial Analysis, Kelsey says scholarships are the reason she is in college, and she is so thankful for all of the support she has been given towards her academics.

Kelsey adds that even though she is only in the first semester of her first year at Thomas, she knows she made the right decision. "The professors are really focused on giving you advice and career tips, which has really allowed me to think outside the box in what I would like to do when I graduate," she says. "It has already begun to introduce me to the business world, and I feel that in just one short semester, I have garnered so much knowledge and sense - not only in the academic areas but in preparation of entering the real world."

Kelsey says she is "so blessed" by the opportunities that are offered at Thomas.

"Due to dual enrollment classes, as well as the Kiest-Morgan Scholars program, I should be able to complete my undergraduate degree in about two and a half years and get my Master's in one. How

many colleges allow you that opportunity? It's a pretty special place that allows students to soar, socially and academically. I would not want to be at any other school."

Kelsey says Thomas has been the right step towards her future. "Thomas represents Maine well. I couldn't be more appreciative of that," she said. "I love Maine, and I want to help nurture its growth and success in the future."

At the awards ceremony, Kelsey met former Senator George Mitchell, founder of the Mitchell Institute and the scholarship. "He is such a brilliant speaker, with an ability to tie any current event along with the pride he has for his country into a speech that directly affects the Mitchell Institute scholars," Kelsey says. "He is a self-made man from Waterville, and I am so awed by that. I hope one day to be as intelligent, giving, and successful as he is."

Kelsey adds that she was grateful for the opportunity to sit with President Laurie Lachance, who attended the event. "Having her sit and talk with me at dinner is just one example of how wonderful Thomas is as a school and community," notes Kelsey. "I was so honored to be having dinner with the President of my college."

Meredith Jones

By Erin Baltes

Meredith Jones joined the Thomas College Board of Trustees in January 2016. We caught up with her to get her take on philanthropy, her advice for students, and how to stay focused in the fight to survive Maine winters.

Q: What drew you to become a Thomas College trustee?



A: What drew me to Thomas is its mission, its leadership, and its students. Having hired more than one Thomas graduate in the past, I have been impressed with their

fabulous work ethic, exceptional problem-solving skills, and their can-do, positive approach to any assignment -- no matter the scale, scope, or complexity. The ones I know, thrive when faced with a challenge and are more capable and confident than many other newly minted college graduates.



Q: In your former role as Maine Community Foundation President, you got to know every corner of the State of Maine. How does Thomas's service to students marry with Maine's needs and its character?

A: As the former President of the Maine Community Foundation, I spent a lot of time thinking about and visiting communities throughout the state. If our communities are to thrive in the long-term, we need a vibrant economy with good-paying jobs. We also need many more college graduates to fill -- and create -- those jobs, most of which will require education and training beyond high school. Thomas College's high touch, personal approach and professional support ensure that each student has an opportunity to succeed.

Q: Tell us about your rules of thumb for giving. What are your criteria for a "good" gift?

A: In my former world of philanthropy, I was often asked what constitutes a good gift. A good gift, no matter the size, can make a difference in the life of an individual, an organization, or a community. A good gift can even change the course of history. But, the best gifts are those that will make a difference and, at the same time, touch your heart.

Maine's future depends on having more people with college degrees, yet fewer and fewer families, especially in Maine, have the financial resources to support their children's post-secondary dreams. In the words of Senator George Mitchell, no one should be guaranteed success, but everyone should have the opportunity to succeed.

I think scholarships are a great gift. Not only does a scholarship help a deserving student defray some of the costs of his or her education, but it is also a gift that keeps giving since college graduates have higher lifetime earnings, more community involvement, and -- believe it or not -- better health than non-college graduates.

Q: You joined the Thomas Board just this year. How do you hope to shape Thomas as a trustee?

A: As a new trustee, I have far more to learn than counsel to provide. I am hopeful my knowledge of Maine communities, my experiences as President and CEO of Maine's second largest foundation, and my passion for higher education will be helpful to the Board as it forges a future limited only by our collective wisdom and creativity and that of our talented faculty and staff.

Q: The Thomas mission is to prepare students for success in their personal and professional lives, and for leadership and service in their communities. What advice would you offer students about becoming leaders and servers in their communities?

A: All of us who are privileged -- and that includes the graduates of Thomas -- have an obligation to give back. For some, giving back might mean running for the local school board, serving on a town council, joining a service club, volunteering for a nonprofit, or becoming a volunteer firefighter. For others, it could be as simple as getting to know one's neighbor or thanking the grocery store check-out clerk. All of these activities build bonds of connection and encourage reciprocity so essential to community health and vitality. It also feels good. So what advice might I have? Stand up, be counted, and connect. You'll feel better for it, and your good deeds will reap rewards beyond measure. Oh, and did I mention that you'll live longer?

Q: Okay, here's a fun one. Tell our readers how you make the most of Maine's winter months.

A: I married into Maine, and winter is my least favorite season. Oh how I long for 9:00 p.m. sunsets, the mournful cry of loons, and long swims in the lake. You want to know how I make the most of winter months? It's my giant calendar with squares for each day and a red felt-tipped marker. The end of each day scores a big red X, and I count those Xs until April 15, when the well-used summer car returns from winter storage. Okay, and I cross-country ski on the Belfast rail trail and on the carriage roads of Acadia National Park. Not a bad way to spend a winter day, I must say.

"Stand up, be counted, and connect. You'll feel better for it, and your good deeds will reap rewards beyond measure."

*Meredith Jones,
Trustee*

Dr. Nelson Madore



By Bob Moore '79

Mention the name Nelson Madore to anyone who attended Thomas from 1969 through 2009 and “best mentor,” “great man,” and “lifelong friend” are just a few of the caring, universal responses you will hear.

Though Thomas was a big part of his life, Nelson brought a lifetime of experience and stories to the College. He grew up in Eagle Lake, Maine, where French was a common first language at home, before attending the University of Maine and going on to earn his doctorate at Vanderbilt University. He became a Green Beret with the Army prior to the Vietnam War, where his French-speaking skills were a valuable skillset.

“When I returned to Maine, I came to Waterville to teach high school French,” Madore says. “Then I was hired by John Thomas to teach history, French, and management at Thomas College.”

The College’s unassuming approach was a significant draw for Madore. “There was no sense of entitlement,” he recalls. “Hardworking students were accepted regardless of their social status. Thomas provided them the opportunity to reach their full potential.”

That culture made itself clear in the classroom, where he loved that students from a variety of backgrounds listened and worked hard. “They were not all great academically, but if they worked hard, I never flunked them. Many who struggled in class – but put in the effort – have gone on to be very successful.”



Madore adds that the relationships among faculty and staff were similar. “There was so much camaraderie in such a small group, and even though instructors were very different, we could all collaborate.”

He often stopped to appreciate his role at Thomas. “I never dreamed I’d be a college professor because I stuttered,” he says. “My brain thought three times ahead of my speech!” Though daunted on occasion, Madore recalled the mantra used by his very supportive parents and grandparents: “‘Do your best,’ they said. And, ‘Don’t burn bridges. You may come to a river that you need to cross.’”

As he built his reputation on campus, so too did he become known in Waterville. He served on the school board and eventually became the mayor.

Upon his retirement, Thomas named a scholarship in his honor, a move supported by the Alpha Delta Gamma fraternity, to whom Madore was a long-time advisor. “I am proud of my heritage, even though I came from few means. Having a scholarship named in my honor meant the world to me, knowing it would help students overcome the number one barrier they face in attending college: the financial one.”

He says of Thomas today, “It’s wonderful that the programs and facilities are still expanding – but I was always optimistic that the College could be what it is now.”

What words of wisdom does he have to share now? “Listen to people – don’t pass judgement. One of the greatest attributes of a leader is listening. If you listen to others, they will be more likely to listen to you.”



Top (R): Gathering with Alpha brothers in 2000: Maurice Beaudry '94, Doug Wilson '88, Sean Trahan '96, M.B.A. '96, Zeno Corrigan '94, M.B.A. '96, and Greg Savard '89;



Middle (L to R): Dr. Madore in the classroom; Leading Commencement procession with Board member Conrad Ayotte and President Spann.

Below: Nelson and Paula M.B.A. '93 Madore, P'04 will celebrate their 40th wedding anniversary this coming June.





Alumni Class Notes

1981

Margaret (Eastup) Beland – After graduating from Thomas, Margaret's career path evolved into administrative management for nonprofit organizations. She recently accepted a position as Finance Manager for the Maine Health Access Foundation, a statewide health philanthropic private foundation based in Augusta. Margaret's past work experience includes lengthy employment at the Maine State Chamber of Commerce and the Maine Development Foundation. Margaret had the privilege of working with President Laurie Lachance when she was President of the Maine Development Foundation. Margaret is the proud mother of a U.S. Marine, Corporal Gregory Perkins, and resides in Augusta with her spouse Robert Beland.

1988

Naimi Smith-Vieno has accepted the position of Finance & Human Resources Coordinator at EPID Research in Espoo, Finland.

1989

Cathy Luce '89, M.B.A. '08 has been promoted to Director of Grants Management at Maine Health Access Foundation in Augusta, ME.

1992

Debbie (Poulin) Myers has accepted the position of 4th grade teacher at Belgrade Central School in Belgrade, ME.

1994

Jo-Anne (Doane) Harrell has been promoted to Business Change Director – Medicare Products at Anthem, Inc. in the greater Norfolk, VA area.

1995

Lisa (Howe) Jordan has been promoted to Vice President – Business Process Manager II at TD Bank in Falmouth, ME.

1998

Dean Newell has accepted the position of IT Manager at Xenex Disinfection Services in San Antonio, TX.

Alan Plummer has been promoted to Specialist – IT Education at MaineGeneral Health.

1999

Felicia Huff has been promoted to Information Technology Manager at Skowhegan Savings Bank in Skowhegan, ME.

John Langlois M.S. has accepted a role as an educator at Cordova High School in Rancho Cordova, CA.

2000

Erin (Hartley) Burnham and Geoff Burnham '01, M.B.A. '03, along with son Bear, welcomed a baby boy, Lockelan Burnham, on March 3, 2016.

Evelyn (Dean) Chabot has been promoted to VP, Business Line Financial Manager II – U.S. Capital Management Group at TD Bank in Lewiston, ME.

2001

Crystal Bridge has been promoted to Assistant Vice President, Government Banking Account Manager II at TD Bank, based out of Portland, ME.

Geoff Burnham '01, M.B.A. '03 and Erin (Hartley) Burnham '00, along with son Bear, welcomed a baby boy, Lockelan Burnham, on March 3, 2016.

Jared O'Roak has been promoted to senior portfolio manager, financial advisor at Morgan Stanley in Bangor, ME.



Thomas alumni from the 70s gather at the home of Diane and Dave Sedler '78 on Lake Winnepesaukee over the weekend of September 17 to pay tribute to a number of alums celebrating their 60th birthday this year.

In addition to Dave, alumni attending include Marc Gendron '77, Tom '77 & Paula (Ramos) McGeary '77, Pete '78 and Valerie (Green) Plummer '79, Dick Carrier '80, Charlie Greer '78, Michelle (Jandreau) Cahill '76 '78, Denise (Jandreau) Cronin '80, Dan Kelsey '78, Chris Jones '77, Chris Holmes '78, Dave Lucius '78, and Rich Nigro.

Congratulations!

Frank Bartlett Scholarship recipients recently gathered with David Smith about Frank's legacy affinity to Thomas. (See page 8 for more information on Mr. Bartlett.)



2002

Amanda Pelletier '02, M.B.A. '06 recently accepted the position of resolution specialist at MEMIC in Portland, ME.

2003

Ren Desimone M.B.A. has been promoted to Air Quality Program Manager at Metropolitan Washington Council of Governments, headquartered in Washington, D.C.

Jason Worswick has been promoted to senior software engineer at Tyler Technologies in Falmouth, ME.

2004

Maren Madore has accepted the position of Family Service Coordinator at the Council of Social Concern in Woburn, MA.

2005

Ben Gervais M.B.A. has accepted the position of outpatient therapist at AngelZ Behavioral Health Services in Winthrop, ME.

Ryan O'Connor has been promoted to Vice President, Marketing & Communications at The League of Southeastern Credit Unions & Affiliates in Tallahassee, FL.

2006

Jeff Friel has accepted the position of Operations Manager at Burns Landscaping & Construction in Tewksbury, MA.

2008

Cory Munsey has accepted the position of Assistant Principal at Mabel I. Wilson School in Cumberland, ME.

Karen (Demers) Verrell, husband Chris Verrell, and big brother Blake are proud to announce the birth of Kenzie Lee Verrell on May 27, 2016, at 5:35 p.m. She weighed 8 lbs., 6 oz. and measured 20 inches long.

2009

Ryell Atkins has been promoted to Dispatch Supervisor at Cumberland County Sheriff's Office.

Brittany (Morin) Johnson and husband Jacoby Johnson are proud to announce the birth of Piper Claire Johnson on May 26, 2016, at 11:29 p.m., weighing 6 lbs., 5 oz.

Matt Peck has accepted the position of Assistant Store Manager at Oakley in Freeport, ME.

2010

Chad Caldwell has accepted the position of Accounting Manager at Sugarloaf Mountain Corporation in Carrabassett Valley, ME.

Brandon '10, M.B.A. '10 and **Nicole (Grant) Flint '10** are proud to announce the birth of Addison Flint on August 29, 2016, at St. Mary's Regional Medical Center in Lewiston, ME, weighing 9 lbs. and measuring 20.75" long.

2011

Daniel Brannigan has accepted the position of middle/high school math teacher at Hall-Dale Middle School and High School, where he will also be coaching soccer and basketball. He has also accepted the position of assistant lacrosse coach at Thomas College.

Zachary Dever has been promoted to senior account manager at UPS in Leominster, MA.

Trista Dumais '11, M.B.A. '11 has accepted the position of staff accountant at Chasse & Company in Auburn, ME.

Dan LaForge M.B.A. has accepted the position Associate Director of Facilities and Planning at University of South Florida Sarasota Manatee in Sarasota, FL.



Alumni Class Notes



Chris '11 and Brittany LaPan are proud to announce the birth of Grayson Lucas LaPan on July, 4, 2016, weighing 6 lbs., 4 oz. and measuring 18.5" long.

2012

Christina (Allaire) '12, M.B.A. '12 (above) and Brandon Ellis were wed on April 23, 2016, at the Hilton Garden Inn Riverwatch Hotel in Auburn, ME.

Travis Frautten M.B.A. has been promoted to Vice President, Commercial Loan Officer at Androscoggin Bank in greater Lewiston/Auburn, ME area.

Brittany Moore has accepted the position of behavioral health professional at KidsPeace, based out of Biddeford, ME.

Megan (Willis) Nerdahl has accepted the position of service processor II at Lincoln Financial Group in Concord, NH.

Nick Schauwecker '12 and wife Linsay are proud to announce the birth of Hudson Schauwecker on April 16, 2016, at 8:54 p.m., weighing 8 lbs., 3 oz. and measuring 21" long.

2013

Tom Beaudoin has accepted the position of sales executive at Jaeger USA, Inc. in Portsmouth, NH. He has also recently begun as a private coach, focusing on baseball, with CoachUp in NH.

Lynn Chaisson '13, M.B.A. '13 has been promoted to senior financial analyst at MaineGeneral Health in Augusta, ME.

Jennifer (Nantel) Foster '13, M.B.A. '13 has accepted the position of realtor at LHI Realty LLC in South China, ME.

James Helma '13, M.B.A. '13 has accepted the position of Safety Manager at ALCOM LLC in Winslow, ME.

Paul Killam '13, '15, M.B.A. '16 has accepted the position of veterans service representative at U.S. Department of Veterans Affairs in Augusta, ME.

Sam Moore has accepted the position of Varsity Softball Coach at Messalonskee High School in Oakland, ME.

Paul Rechichi has been promoted to account executive at Racepoint Global, based out of Boston, MA.

2014

Ashley Bingham has accepted the position of Office Manager at Vapotherm in Exeter, NH.

Casey Conroy has been promoted to pricing specialist at Geiger in Lewiston, ME.



August 2016: Alumni gather at the wedding of Sarah (Peterson) & Jason Webster

Back Row: Chase Horton '16, Tyler Mitchell '14, Jonte Rousell '15, Jordan Hoyt '14, Tom Beaudoin '13, Bud Prue '15, M.B.A. '16

Middle Row: Kirby (McPhail) Mitchell '15, Brooklyn Curry '16, Annie Young '19, Kasey Theriault '16, Emily Bell, Erin Baltes, Brittany Newman '12, Samantha (Pelkey) Beaudoin '12, Courtney Clark '16

Front Row: Lyndsi Merrill '17, Gage Thurston '17, Ricky DerBoghosian '15, Ryan Blakeney '16, Sarah (Peterson) Webster '15, Jason Webster '16, Read Thurston '15, M.B.A. '16



Alumni Class Notes

Trevor Davis has been promoted to Cybersecurity Incident Response Analyst at L.L. Bean in Freeport, ME.

Cody Leland M.B.A. has been promoted to Assistant Director of Admissions at Unity College in Unity, ME.

Garen Manzo has accepted the position of sales associate at A-Copi Imaging Systems in Gardiner, ME.

Tom Nadeau has been promoted to credit analyst at AutoCapital Canada, Inc. in the greater Toronto, Ontario, Canada area.

Marquis Pollard has accepted the position of Head Men's Basketball Coach at Washington Academy Prep in Greenville, NC.

Emily Sexton has been promoted to Accounting Manager at West Central Behavioral Health in Lebanon, NH.

Courtney (McLaughlin) Stewart M.B.A. has accepted the position of Development Director at NAMI Maine in Augusta, ME.

2015

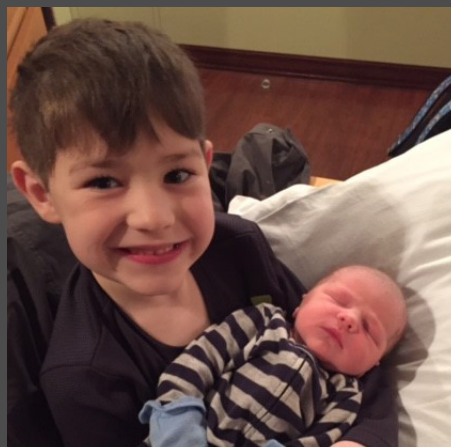
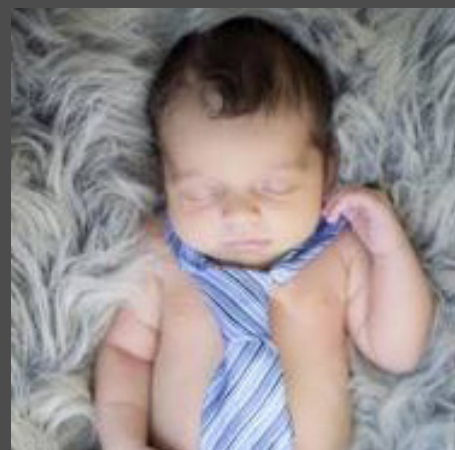
Caitlin Bacon M.B.A. has accepted the position of associate analyst at CGI in Waterville, ME.

Tiny Terriers!

Thomas loves baby and family photos! Send us your best family photos for everyone to celebrate. Alumni and friends would enjoy seeing you and your family - children or your furry friends!

Top (L-R): **Brandon '10, M.B.A. '10 and Nicole (Grant) Flint '10** - Addison Flint, August 29, 2016; **Brittany (Morin) Johnson '09** - Piper Claire Johnson, May 26, 2016; **Chris LaPan '11** - Grayson Lucas LaPan, July 4, 2016

Middle (L-R): **Geoff Burnham '01, M.B.A. '03** - Lockelan Burnham, March 3, 2016; **Karen (Demers) Verrell '08** - Kenzie Lee Verrell, May 27, 2016; **Nick Schauwecker '12** - Hudson Schauwecker, April 16, 2016.





Alumni Class Notes

Nick Barish '15, M.B.A. '16 has accepted the position of Cost Controller at Starcon International in La Porte, TX.

Cameron Creamer '15, M.B.A. '16 has accepted the position of Assistant Athletic Director for Internal and External Communication at Johnson State College in Johnson, VT.

Heather Greene has been promoted to associate accountant at EMHS in Brewer, ME.

Sheldon Jones '15, M.B.A. '16 has accepted the position of consumer lending specialist at OneMain Financial in Augusta, ME.

Jessica Laliberte M.B.A. has founded and is the President of The Liberte Consulting Group, LLC.

Mary Grace '15 and Jenn (Day) Morris '15, M.B.A. '16 were wed on Saturday, June 4, at the Augusta Elks Lodge in Augusta, ME.

Read Thurston '15, M.B.A. '16 has been promoted to Front Office Supervisor at the Westin Portland Harborview in Portland, ME.

Sarah (Peterson) '15 and Jason Webster '16 were wed on August 20, 2016, at the Augusta Elks Lodge in Augusta, ME.

2016

Amanda Cotter has accepted the position of 4th grade teacher at St. Albans Consolidated School in St. Albans, ME.

Chrissy Cunningham has been named Head Varsity Field Hockey Coach at Waterville Senior High School in Waterville, ME.

Joe Greco has accepted the position of credit analyst at Farm Credit East in Auburn, ME.

Jenifer Ha has accepted the position of special events assistant at the Muscular Dystrophy Association in Westbrook, ME.

Kaitlyn Honea has accepted the position of kindergarten-2nd grade teacher at Holy Savior School in Rumford, ME.

Zachary Kennedy has accepted the position of software developer at Tyler Technologies in Falmouth, ME.

Crystal Leavitt has accepted the position of sales management trainee at Enterprise Rent-A-Car in Waterville, ME.

Peter Levasseur M.B.A. has accepted the position of Senior Graphic Designer at Eastern Maine Healthcare Systems in Brewer, ME.

Katie McAllister has accepted the position of Membership & Marketing Coordinator at the Kennebec Valley Chamber of Commerce in Augusta, ME.

Luke Middleton has accepted the position of Inside Sales Manager at STARC Systems in Brunswick, ME.

Blaine Ward has accepted the position of earned income analyst at Performance Foodservice in Augusta, ME.

Jason '16 and Sarah (Peterson) Webster '15 were wed on August 20, 2016, at the Augusta Elks Lodge in Augusta, ME.



Lucy (Webb) Hardy '77, Carol (Manzer) Dolan '77, and Marcy Poppel '77- at lunch in Kittery, ME.



August 2016: Alumni celebrate at the Red Sox game at Fenway Park

A full house of alumni attended, including:

(L to R) Joe "Peppy" Farese, Lorri (Peterlin) Hall '84, Kevin Mahoney '82, Shirley (Elliott) Edbrooke '83, Michael Clinton '85, and Troy Munford '84

Employee Happenings



Thomas College is excited to announce the hiring of Ted Prawat, Assistant Professor, as a valued member of the Center for Innovation in Education.

"It's rewarding to get big ideas about the world out in front of students and let them take them for a ride. The goal in this model is to put students in the driver seat to find the most eye-opening ideas about a subject and write, perform, or create a work for their class that evidences imagination and innovation. Essentially, you can set up an idea imagination studio where students can work these ideas out for class in a live creative format. I have seen professors at Thomas College who participated in this year's Thomas Cup already experimenting with this kind of curricular approach," says Ted about his position at Thomas.



Images by Ted Prawat

(Top) In November, I attended the London International Conference on Education where I presented a paper I co-authored titled "Building the Educative Component of Science Learning Games" and also stopped by the National Gallery of London to prepare video lectures for the "Art Appreciation" course I'll teach at Thomas College next semester. The first image with the banner was taken in front of Leonardo da Vinci's "Madonna of the Rocks" a work we covered this past semester in The Creative Mind Course I taught.

(Bottom Left) A portrait painting I made with oil paint on linen canvas titled "Courtney at Monument Valley"

(Bottom Right) A portrait painting I made with oil paint on linen canvas titled "La Primavera"

Thomas College welcomes the following individuals:

Alexandra M. Kriegel	Assistant Field Hockey Coach
Darren E Mathews	Head Women's Tennis Coach
James M Evans	Assoc Head Men's & Women's Soccer Coach
Amanda R Wiley	Admissions Counselor
Bryant E LaVerdiere	Public Safety Officer
Amy B Bai	Adjunct Instructor
Theodore R Prawat	Assistant Professor
Natalie K West	Assistant Professor
Diana L Jeannotte	Adjunct Instructor
Amy C Jirsa	Adjunct Instructor
Matthew A Keene	Adjunct Lecturer
Jared J Mills	Adjunct Instructor
Gail A Rioux	Assistant Professor
Ekaterina Rybakova	Assistant Professor
Kurtis J Bixby	Assistant Men's Basketball Coach
Katahdin Cook Whitt	Assistant Professor
Michael B. Akanji	Assistant Men's Basketball Coach

Caitlin Kriesel-Bigler	Assistant Women's Basketball Coach
Cory A. Rogers	Adjunct Instructor
Ian Wilson	Head Coach Club Track and Field
Mark A St. Vincent	Admissions Counselor

Thomas College congratulates the following individuals on their promotions:

Dr. Dan Leland	Assistant Professor
Dr. Andres Morales	Associate Professor
Dr. Mark Marsolais	Associate Professor
Dr. Pamela Thompson	Full Professor
Brittany Newman '12	Assistant Director of Admissions
MacKenzie Riley	Assistant Director of Media Relations
Debbie Cunningham	Vice President of Student Success
Bob Moore '79	Senior Vice President of Advancement



In Memoriam

Class of 1959

Paul F. Colburn, age 82 of Brooksville, FL, died Sunday, October 2, 2016, at Health South Rehab. He was born in Taunton, MA, and came to the area in 1985 from Hawaii. Paul graduated from Thomas College in Maine. He served in the Marine Corps, Air Force, active Navy Reserve, and finally the U.S. Coast Guard for a total of 27 years of service to his country. He was an avid sportsman and had a never-ending love for his family.

Class of 1967

Gloria Miranda, 69, mother, grandmother, superhuman friend, passed away Sunday, September 11, 2016, after a long, courageous battle with cancer. Born Gloria Jean McClure in Owl's Head, ME, she graduated from Rockland High School in 1965 and Thomas College in 1967. She settled in Portland, ME, where she raised her two sons. Gloria worked for 35 years at Brockway Smith. Every December, Gloria would transform her entire home into a Christmas Cookie Factory, using handed-down recipes from her mother-in-law. Many of her friends and family would eagerly anticipate receiving her coveted tin containers filled with seasonal sweets and brag to others "I got my Gloria's Christmas Cookies!" She was a strong woman, stubborn, yet gentle but direct. You always knew what she was thinking. She especially loved doting on her grandchildren, treasuring her "Joey" sleepovers and "baby doll time" with Mila.

Class of 1971

Lester Alfred Giguere, 68, passed away at home on Saturday, October 1, 2016, following a short illness. Les was born in Waterville on November 6, 1947, the son of Clarence and Rita Boulette Giguere. He grew up in Waterville and graduated from Waterville High School, class of 1966. He attended Husson College in Bangor, where he

was captain of the hockey team in 1966-67. He graduated from Thomas College, Class of 1970 with a BS in Management. He was on the Thomas Hockey Team in 1967-68 and was a member of the Circle K Club in 1968-69. He served on the Waterville City Council and served as Chairman. He was known as "The Mayor of the South End." He received the City of Waterville Plaque for service as chairman of the City Council in 1981 and Central Maine Softball League Plaque for dedication and hard work in establishing the league in 1982. He also received the Arch award in 1980.

Class of 1972

Eleanor J. Hayes, 82 of County Highway 119, Lassellsville, NY, (T/Ephratah) passed away Saturday, September 10, 2016, at Bassett Medical Center, Cooperstown. Eleanor was born on September 22, 1933, in Herkimer, NY, daughter of the late Donald and Gladys (Griffin) Cline. She was a graduate of Oppenheim-Ephratah Central School Class of 1951; Albany Business College Class of 1954; Thomas College Class of 1972; FMCC Class of 1973; and, State University of Albany Class of 1975. She was united in marriage to her husband of 60 years William P. Hayes on September 15, 1956, at the United Methodist Church in Lassellsville. Mrs. Hayes was employed in various offices from 1954-1970. She became a business teacher at the Little Falls School district in 1972. She retired in 1992 and continued to substitute teach for 14 years at the St. Johnsville schools. Her love of life was being a Christian and spiritual leader in her church and community. Her blessings were her grandchildren and great grandchildren. She will be missed by her family, friends, and former students. She also at one time served as a member of the Oppenheim-Ephratah Central School Board of Education.

Class of 1973

Zanie Nawfel Hikel, 94, died peacefully, Saturday, August 27, 2016, in Pittsfield. Zanie was born on October 14, 1921, in Waterville, ME, the daughter of Sam and Adma (Daghir) Nawfel. She graduated from Waterville High School and received her degree from Thomas College and the University of Maine. In her early years, she was employed as a secretary for the Department of the Navy in Washington, DC, working for Admiral Nimitz. She later worked on the military base in Bangor and also taught at Maine Central Institute for over 20 years. Zanie was a loving wife, mother, and grandmother. She loved cooking and could make an amazing meal in less than an hour. She enjoyed crocheting, gardening, and teaching. She was a member of the ARTS Club and Ladies Guild and a communicant of St. Agnes Catholic Church.

Class of 1987

Scott A. Kirmes, age 52, passed away on Wednesday, September 14, 2016, after a long battle with brain cancer. Throughout his illness, he maintained his sense of humor and determination to live a normal life. He was a fighter to the end. He was born in Portsmouth, NH on May 7, 1964. Scott was a graduate of Berwick Academy private school and obtained a Bachelor of Science degree in Management from Thomas College in Waterville, ME. Scott was a member of Kappa Delta Phi National Fraternity, where he served as President and National Board Member. He was also Captain of the Varsity Hockey team. Scott worked for Superpetz for 16 years as a District Manager and finished his career with Food Lion. Working in retail all his life, he met hundreds of people and was well liked and respected as a boss and mentor. He was hardworking and was a man of the highest integrity. Throughout his life, Scott spent most of his free time enjoying the outdoors. He liked fishing and boating at Jeannine's

camp in Maine, playing hockey at Twin Ponds with the Spirits and later with the Kodiaks hockey teams, poolside with the Castles, and golf and skiing with Joe. But overall, he enjoyed being with his wife and sons, Alex and Andrew. Of them, he was most proud.

Honorary Degree

Leonard G. Saulter, Sr. passed away peacefully on October 6, 2016, surrounded by family after an extraordinary life spanning 90 years. Born on May 22, 1926, in Waterville to Harry and Ellen (Howell) Saulter, Len was a man from humble beginnings who had a special way with people from a young age and a smile that could light up a room. He graduated from Bowdoin College in 1951 and joined Hathaway Shirt Company as a salesman in their management training program. At the age of 35, he returned to Waterville and was named President of Hathaway in 1961, where he served at the helm for 15 years. Throughout his life and career, with Shirlie at his side, Len was passionate about “doing the right thing” and “making a difference” in his community. In 1970, he was named Man of the Year by the Mid-Maine Chamber of Commerce and received an Honorary Degree from Thomas College in 1987.

Employee

Daniel J. Arch 58, passed away Monday, August 22, 2016, at Inland Hospital with family by his side. He was born in Houlton, ME, on May 4, 1958, the son of Lawrence and Mary (Wright) Arch. He was educated in Houlton schools and was a graduate of Houlton High School and had attended Thomas College in Waterville for two years. He was formerly employed as a custodian at Thomas College in Waterville for several years. He enjoyed camping, fishing, and family outings.

Michael Wesley Bennoch

1996 - 2016



Michael Wesley Bennoch 1996 - 2016, “Big Mike”, 19, of Chesterville, passed away on Sunday, August 28, 2016, with his family at his side.

He battled cancer for 16 months and was always more concerned about everyone else. In the words of his parents, Mark and Kathleen (Fera) Bennoch who welcomed him into this world on November 5, 1996, in Farmington, “He was a great son and was taken too soon.” He lived in Vienna before moving to Chesterville and was a 2015 graduate of Mt. Blue High School, Farmington, where he enjoyed his friends, running track, playing basketball and lacrosse, and weight lifting. He was the humble recipient of being voted as Prom King during his senior year.

“Big Mike” enjoyed watching the Patriots and at the time of his passing, was working on the final edited version of what he hoped would be the first of many action novels, much like the action and intrigue of James Bond. He was a freshman at Thomas College where he was studying entrepreneurship; his goal was to be a business consultant.

He is loved by his parents, Kathleen and Mark of Chesterville; his sister, Heather Downing and her husband, Patrick of Livermore; a nephew, William Downing of Livermore; paternal grandmother, Sallee Bennoch of Mkt. Square Nursing Care Center in S. Paris; three aunts, Michele Garriepy, Tricia Bassett and Christine Fera, all of Rhode Island; special cousins, Melissa, Gregory and Christopher; as well as others and several aunts, uncles and many friends; as well as his little companion, Moose, his Chihuahua. He will be sadly missed by all.



Annual Report FY '16

PRESIDENTIAL MEDALLION CIRCLE

\$100,000 AND ABOVE

Bill and Joan Alfond Foundation
Harold Alfond Foundation
Henry H'15 and Ellen Hinman H'15
The Lunder Foundation
U.S. Department of Education TRiO Programs
Unity Foundation

TRUSTEE EMERITI CIRCLE

\$25,000 - \$49,999

Francis Bartlett, Jr. Revocable Trust
Davis Educational Foundation
On Target Utility Services
H. Allen H'08 and Dianne Ryan
Sodexo, Inc. & Affiliates
Richard M.S. '80 and Janis Spellman
Sukeforth Charitable Foundation

TRUSTEES' CIRCLE

\$10,000 - \$24,999

Conrad '77, H'98 and Lois (Brown) Ayotte '76
Brian '88 and Amy Bernatchez
G&E Roofing Company, Inc.
Giri Hotel Management LLC
Golden Pond Wealth Management, Brian '88
and Amy Bernatchez, and Albert, III M.B.A. '94
and Sara (Delgado) Languet '95
David and Laurie (Gagnon) Lachance M.B.A. '92
MELMAC Education Foundation
John W. H'07 and Jeanne M. Rowe
The Sheridan Corporation
Todd '92, M.B.A. '99
and Kelly (Wood) Smith M.S. '12
George Spann H'16

PRESIDENT'S CIRCLE

\$5,000 - \$9,999

Coldwell Banker Plourde Real Estate,
Donald and Irene Plourde
Cross Insurance
Douglas H'09 and Marie (Wing) Cutchin '62
Richard Forsley '03, M.B.A. '06
Charles, III and Ruth Johnson
The Agnes M. Lindsay Trust
Macpage LLC
H.M. Payson
Brian '89 and Earleen Phillips
Bill and Stacey Ryan
Sebasticook Valley FCU
Summit Natural Gas of Maine
Verizon Foundation
Ken and Margaret Viens
Kevin '80, Judy P'19, Kelly, Kody,
and Kolton Vining
Witt/Kieffer
In honor of Katherine Haley

LEADERSHIP SOCIETY

\$2,500 - \$4,999

Anonymous
Bangor Savings Bank
BerryDunn
Leland '50 and Donna (Andrews) Bessey '49
Central Maine Power Company
Charlie's Family of Dealerships
Larry '70, '74, M.S. '78 and Donna Davis
W.H. Demmons, Inc.
Richard Forsley P'03, P'06
Gary Goldman '78
Robin M.B.A. '90 and Sharon Goodwin
Hawkeye Management, Inc.
Inland Hospital

Bob '79 and Susan Moore M.S. '14
New Balance Athletic Shoe, Inc.*
North Atlantic Conference
Dorcas Riley
David Roussel '93
In honor of Coach Jim Evans
Susan (Pooler) '77, P'09 and Howard Sevey
Union Office Interiors

OAK TREE SOCIETY

\$1,000 - \$2,499

Anonymous
AAA - Northern New England*
Clifford Abbott, Jr.
Apple, Inc.
Arbella Insurance Group Charitable Foundation, Inc.
Erin and Jason Baltes
Lisa (Van Vranken) Bargsley '76
Wendy (Iwans) '80, '88 and Thomas Bean
Belgrade Lakes Golf Club*
Debra Biche-Labbe and Jim Labbe P'20
Chad Boyd '00
Ralph Brown P'87, P'88
In memory of Stephen H. Brown
Central Maine Motors Auto Group
Communication Technologies, Inc.
Scott Conant '90
Paul, Jr. '77 and JoEllen (Cuthbert) Cottrell '76
Paul & JoEllen Cottrell Charitable Fund
Donald Cragen M.B.A. '13
Dick Curry and Ellen Honan
Michael '83 and Linda (Kura) D'Avolio '80, '82
Lisa M. Desautels
Eric and Angela Dexter P'19
Sherry and Joe Donato
James Doyle
William '72 and Paula Dubay

Daniel '83 and Beth Dumont
 Wendy (Mills) '89, M.B.A. '94 and David Dyer
 James '93 and Elizabeth Eastlack
 Bruce Forsley
 GDS Associates, Inc.
 Beth B. Gibbs M.B.A. '93, P'12
 Todd Greenquist and Jonathan Carr '91, M.B.A. '91 🌟
 Katherine Haley and Guy Haas
 Chuck M.B.A. '02 and Maria Hays
 Meredith Jones and Dana Murch
 Jonathan and Sara Kent
 Charles and Pamela Kriegel P'11, P'12
 Jim Lemieux '91, '94, M.B.A. '97 🌟
 Maine Higher Education Assistance Foundation
 MaineGeneral Health
 Nancy (Lemar) '64 and Thomas Marston
 J.S. McCarthy Printers
 NLC Ink Screen Printing & Embroidery LLC*
 Johnson W. Parks Family Trust
 Roderick '75 and Deborah Pelletier
 Gregory and Dorothy Piper
 Christopher '88, M.B.A. '89, Andrea M.S. '07,
 Emma, and Andrew Rhoda
 Alice Savage, M.D., Ph.D.
 Jim '89 and Kelley (Benoit) Shimansky '89
 Lesley (Dolloff) '79 and Bill Sprague
 Michelle (Gilmore) Thorpe Hayes '81, '83
 and Peter Hayes
 Roberta (Cross) '69, '71 and David Tibbetts '72
 Twin Pines Family Medicine
 UNUM
 Vallee Configurations
 Sumner Weeks, Jr. P'19
 Wells Fargo Educational Matching Gift Program
 Paul G. White Interior Solutions
 Wight's Sporting Goods
 Douglas '88 and Jennifer (Harmon) Wilson '88 🌟

1894 SOCIETY

\$500-\$999

Anonymous
 Joseph '73 and Karoldene Barnes
 Bemis Associates Inc.
 Susan Benfield
 Big Entertainment Live*
 Elizabeth (Pilsbury) '05 and Drew Bridger
 Thomas and Nancy Call
 Jamie and Kim Campbell P'18
 Thomas Capato
 D.F. Chase, Inc.
 Robert '82 and Juelle Clark 🌟
 Susan (Conant) Cook M.B.A. '02 🌟
 John and Cheryl Daggett 🌟
 Cindy (Morin) '95 and James Daigle
 Delta Ambulance Corporation*
 John and Carol Dexter
 Domino's
 Steven Dyer 🌟
 Thomas and Barbara Edwards
 Douglas '83 and Colleen (Payne) Eugley '83, P'15
 FastTrack RTW Services & Solutions
 Paul Fortin '77, M.B.A. '86
 PR Fortin & Sons Land & Timber
 Fortin's Home Furnishings
 Scott '01 and Laura Fossett
 Kelly Frost 🌟
 Maryanne Gawlinski '80 and Joseph McCarthy
 Marc '77 and Paula (Coolong) Gendron '78
 Peter Gilbert M.S. '78, P'99
 Janette Giles
 Steven and Suanne Giorgetti
 Global Impact
 Goggin's IGA Supermarket
 Dorothy Herbert
 Higgins & Bolduc Agency, Inc.
 It's a Good Pizza *

Timothy and Patricia Jaroch
In memory of Christina Wilkins
 Kenneth and Rebecca Kane P'19
 Gregory '93 and Lola (Guerrette) Korn '95 🌟
 LPL Financial Matching Gift Program
 Jason LaVerdiere 🌟
 Lisa (Bolduc) '98, '08 and David Leach
 Paul LeBlanc '84
 The Lynam Insurance Agency
 Marden, Dubord, Bernier & Stevens
 Nancy (Briggs) Marshall M.B.A. '94 🌟
 Dr. Maryam Mermey
 Paul Mufson and Kathleen Ryan-Mufson 🌟
In memory of Veronica Ryan
 Norris, Inc.
 Cary Olson Cartwright and Alan Cartwright
 Bernard '92, M.B.A. '99 and Lisa Ouellette 🌟
 Janet (Mackay) '71 and Richard Parkhurst
 David Pease and Edward Tobolski
 Eric Reddy '04 and Maren Madore '04
 David and Sheila Rhoades
 Barbara (Talbot) '80 and Douglas Sinclair
 Richard '81 and Jean Slingsby 🌟
 TJ and Kerry Smart 🌟
 Paul Sottak
 Stephen and Cathy Stewart P'12
 The Talaria, LLC dba The Hinckley Company, LLC
 Douglas '73
 and Patricia (Mathieson) Tatham '71, M.S. '99
 Oscar Udoji '76
 Veilleux Funeral Home
 Dog Wallace and Ellen McQuiston P'07
 Waterville Country Club*
 Ryan Watts '73
 Rick Whalen '93
 Whitt's Garment Works*
 Mikaela M.S. '15 and Anthony Ziobro 🌟

TERRIER CLUB

\$250-\$499

Anonymous*
 Anonymous (2)
 Anonymous 🌟
In memory of Richard and Pauline Rudy
In honor of Laurie Lachance
 John H., CPA '82 and Dana Andrews
 Androscoggin Bank
 Applebee's
 Augusta Country Club*
 Matthew Babson '86 and Donna Shepard
 Bruce '77 and Karen Bachelder
 Steve and Lori Beaulieu
 Joan (Coleman) M.B.A. '90 and Eugene Beaupre H'82
 James Begin
 Brookewood Realty
 Brown & Milliken Agency
 Lauren Brubaker
 Bonnie (Dyer) '13 and Todd Buckmore 🌟
In memory of William & Joyce Dyer
 The Bokers 🌟
 Thomas and Jane Call P'19
In honor of Sarahjane Call
 Carol Carew M.B.A. '01
 Periann (Smith) '83 and Jason Carl 🌟
 Clifford M.B.A. '89 and Lisa Carter P'19
 Barbara Cheli
 Joshua Clark '14
In memory of Dave Dutil '15
In memory of Bill Lawler
 Matthew and Joan Cloutier
 Dana Clukey*
 Shannon and Curtis Combar
 Esther Crawford
 Emily Cummins
 Thomas '78 and Bonnie (Smith) Dean '76

Jarod '12, M.B.A. '14 and Tanya (Berry) Deanis '12
 James M.B.A. '14, Amanda, and Cooper Delorie 🌟
 Amanda Drummond '12 🌟
 Robert, Jr. '00 and Sarah (Currier) Dube '01
 Cathy Dumont M.B.A. '10, P'19 🌟
 Neil and M. Patricia Esposito
 Douglas '83 and Colleen (Payne) Eugley '83, P'15
 Fireside Inn and Suites*
 James Fitton '67 🌟
 Andrew Folan '11
 Alan Forsley
 D.L. Fottter & Sons, Inc.
 Nancy (Alexander) '00, M.B.A. '02 and Nicholas Fox
 Linda Freese
 Robert Gagnon '07, M.B.A. '10
 and Kari Grant-Gagnon '07, M.B.A. '09
 Joseph '79 and Denise Gasbarrone
 Ralph '56 and Connie Gilman
 Paul Goodof
 Diane (Gurley) '77 and Giuseppe Grandinetti
 Michael '86, M.B.A. '97
 and Lisa (Thibault) Hachey '86
 Judith Hansen-Childers M.B.A. '96, M.S. '98, P'01
 and Dennis Childers P'16
 David Hawkes '69
 Dana and Lucille Haynes
 Haynes Garage, Inc.
 William Hefler
 Beverly Hensley
 J.T.'s Finest Kind Saw, Inc.*
 Johnny's Selected Seeds
 Mike Johnson '94 🌟
In honor of Marie Gaudet
 John Joseph, Jr.
 Kevin '77 and Diane Joseph
 Kappa Delta Phi Nu Chapter Alumni Association
 George '94 and Julie (Parlin) Keim '95
 Nick Labbe M.B.A. '12 and Michelle Joler-Labbe 🌟
 Harry LaFond
 Michael and Victoria Lawson P'17
 John and Laurie LeBourveau P'19
 Lawrence '70 and Linda LeClair
 James and Jennifer (Peternel) Libby
 Shirley (Merrill) Lidstone '72, '96
 Kim (Nadeau) Lindlof '91
 MacKinnon Property Management
 Joseph Maggi P'17 🌟
 Maine Water Works Supply Corporation
 McAllister Real Estate



Gregory M.B.A. '01 and Stephanie (Talbot) McNeal '00
 Dick and Betty-Jane Meader
In honor of Dr. Philomena McPhee-Brown
 Millennium Power Services, Inc.
 Justin Miller '08 🌟
 Vicki '91, '93 and William Mitchell
 Harry, Jr. '89 and Cindy (LaBarge) Monti '89 🌟
 Robert '04, M.B.A. '06 and Anne Morin
 Keith Morneau '96, M.B.A. '96
 and Robyn (Adams) Campbell '95
 James Murton M.B.A. '90 🌟
 Althea Noel
 Kevin '84 and Lisa (Manson) Orkney '83
 Germaine Orloff M.B.A. '88
 Ouellette and Associates
 Corey '04, M.B.A. '12
 and Jennifer (DeRoche) Pelletier '04, M.B.A. '14 🌟
 PepsiCo Foodservice*
 James Pewitt

Pete '78 and Valerie (Green) Plummer '79
 June Price '48
 Roland Quinlan
 James Raddatz
 Darlene Ratte '86, M.B.A. '88
In memory of James Ratte
 Nikolas Ray '02, M.B.A. '07
 Judith Richard '84
 Michael '92 and Juley Salisbury P'20
 Robert '81 and Patricia Salvas 🌻
 Nancy Sandreuter P'91
 Sappi
 Russell, II '80 and Rebecca Schmelzer
 David '78 and Diane Sedler
 David Sewall
 Chris Sousa
In honor of Isaiah Arana
 Southern Angel Properties, LLC
 Kevin '86 and Laura (Polland) Sullivan '83, P'19
 Sweet Dreams*
 Andrea M.B.A. '14 and Jerrod Thebarger
 Thomas College Dance Program
 Sean '96, M.B.A. '96 and Tonya Trahan
 White Hat Construction, LLC
 Edward and Julie Wilcox P'17
 Wayne '80 and Susan Winston
In memory of Rachel (Charette) Begin '81
 The Winter Harbor Agency
 Zimba Company Inc.

RED & BLACK CLUB

\$100-\$249

Anonymous (7)
 Michael '72 and Susan Adams
 Advance 1 Cleaning Services, Inc.
 After Hours Heating Service*
 Wallace Alexander
 Joanne Allen '02, M.B.A. '02
 Tawny Alvarez '05
 Paul M.B.A. '90 and Anna Anderson
 Karen (George) M.S. '12 and Frank Appunn*
 Karen (McLean) '79 and Robert Archer
 Aroma Joe's Coffee*
 Daniel '82 and Cynthia Atkinson
 David Augustine



The Bank of America Charitable Foundation, Inc.
 Barber Investments, LLC
 Bryan '80 and Terri Barstow
 Charles Bedard
 Emily and Jordan Bell 🌻
 Pauline Bergeron-Flood '75 and John Flood
 Jane (Wilson) '78 and Daniel Bickford P'15
 Stephen and Amber Bigelow
 William and Carol Billek
 David Billings
 Anne Bisson
 Dean M.B.A. '93 and Ruth Bither
 Antoine Blais '99
 Wayne and Tandra Blake
 David Blakeman
 John M.B.A. '04 and Jean Bloemendaal
 Peter and Janice Blondin
 Matthew '80
 and Nancy (Gilbert) Bodine '79, M.S. '83
 Lucas Bohman '16
 Donald M.B.A. '80 and Eleanor Borman
 Mark '72 and Deborah Bouvier
 Bragdon Farm, LLC*

Allen and Susan Browne
 Paul Bucknam
In honor of Cordell Soper
 Thomas '84 and Jill Bullock
 Daniel '88 and Elizabeth (Letourneau) Burgess '84
 Brian Burns
 Anthony Buzzell
 Katherine Cahall '88, '91, M.B.A. '95
 and Wayne Cook
 Peyton Call
 John Callahan '72
 Bruce Campbell M.B.A. '90
 Cappza's Pizza*
 Edwin and Jutta Carboni
 Walter M.B.A. '07, P'07, P'19
 and Kristi (Dellaway) Carlow '09
 Michael '80 and Phyllis (Whiteman) Charette '78
 Clayton '81 and Margaret Churchill
 Susan (Quirion) Clary M.B.A. '97
 Daniel Collins '15
 and Jaclyn Hartwell '14, M.B.A. '15
 TJ '11, M.B.A. '11 and Casey (Trask) Collins '11 🌻
 Heath Colpack
 James and Sandra Colpack
 Carolyn (Carpenter) '76
 and C. Christopher Colpitts
 Ryan '02 and Jill Conley
 Martin '83 and Lynn Connor
 Catherine Contigiani
 Copp Excavating, Inc.
 Michael Costello
 Thomas and Doria Cotter P'17
 Country Cabinets, etc., LLC
 Jane Croteau
 Bethany Cyr '93
 DS Networking, LLC
 Derek Daigneault '94
 Damon's College Quick Stop*
 Alice (Reeves) '79 and Brinton Darlington
 Anna Dattilio
 Mary Davis
 Scott and Helen Davis
 Day's Travel Bureau
 Marie Deeb '62
 Daniel DeLong
 Frederick, Jr. '87 and Cindy Denico
 Carolyn Dennett P'18 and Hartley Palleschi
 Michael '74 and Susan Deschaine P'01
 Peiter Devos
 Jane Devou
 Joseph and Eloine Devou
 Mario DiMascio
 Robert '84 and Catherine Dion
 Sandra Disch
 Jack '80 and Lisa Donilon
 Erika Dore
 Alfred and Tammy Dow
 David and Marie Drescher
 Dwaine M.B.A. '02
 and Brenda (Glidden) Drummond M.B.A. '02
 Eugene and Linda Eaton
 Peter '89 and Kelly Ellis
 Erik Endresen '75
 FMC Car Group, LLC
 Lisa Fairbanks '01, '16, P'04
 Celeste Fecteau
 Norman and Anne Feeley
 Lorraine Fellows '87
 Stephen and Corrinne Ferreira
 Robert and Amy Filloramo P'19
 Michael Fitton '77
 Walda (Simcock) '05 and Steve Fitton
 Richard and Alice Fitzgerald P'17
 William M.B.A. '94 and Lucy Flaherty
 Bruce Fleischmann '71
 Anthony Flye
 Amber (Hall) '77 and Jeffery Fournier

William '94 and Michelle Fournier
 Kimberly Frazier P'19
 Furniture & Floors North
 GHM Agency
 Gagne Painting
 Jennifer Gagnon
In honor of Cassie Contigiani
 Nancy Garland
 GE Foundation
 John and Nancy Geljookian
 Kurt Gilbert '73
 Pauline (Harding) Gorham '74
 Christopher '10
 and Melissa (Gouin) Baez '11, M.B.A. '11
 Wayne '76 and Katrina (Young) Gove '77
 Governor's Waterville*
 Herbert and Jacqueline Gray
 Charlie '78 and Nancy Greer
 Robert '51 and Ruth Grendell
 Michael '92, M.B.A. '92
 and Kellie (James) Guarino '92, M.B.A. '98
 Romance Hackett '74
 Thomas Hall
 LaRue Hamilton '82
 Arnold '83, '86 and Rebecca Hanscom
 Lucy (Webb) '77 and David Hardy
 Donn Harriman P'16, P'17
 Robert M.B.A. '85 and Elaine Harriman
 Charles, II '85 and Denise (Guenette) Harris '85
 Daniel and Becky Haynes
 Douglas Heanssler
 Philippe '59 and Patricia Hebert
 Henggeler/Rowland Family Charitable Fund
 James Hennigar H'03
 Geoff and Diane Hensley
 Mark Herbert
 Ruben and Dalia Hernandez
 Shaune O.L. Higgins and Ann Glendening
 Theresa Hill
In honor of Alexis J. Colpack
 Kerry Hoey
 Michael and Stephanie Hoff
 David Holden
 Burton Holt and Mary Balfour-Holt
 Richard '67 and Diane Holt
 Honeywell International Inc.
 Jim Hopkins Excavation
 Roland '57 and Gertrude Huard
 Jeff '87 and Marcia Hubert P'13, P'14
 Shonna and Travis Humphrey 🌻
 Robert and Paula Hunter
 Scott '82 and Sharon (Stone) Jacobs '80
 Lisa (Shores) '92 and Patrick Jacques
 Susan (Crosby) Jacques '47
 William Janakis '15
 Jay Diesel Gas
 Kory Johnson
 Jordan Lumber Company, Inc.
 Jonathan and Kimberley Jordan P'17
 Richard and Vanessa Jordan
 Jordan's Snack Bar, Inc.
 Craig '81 and Laura Joseph
 Joseph's Fireside Steakhouse*
 K G Realty
 Jeffrey Kahl
 Kappa Delta Phi - The General
 Peter and Winifred Kelly
 Daniel Kelsey '78 and Judith Piperberg Kelsey
 Kennebec Valley Toastmasters*
 Jane (Etchier) '78 and Larry Kennedy
 Paula (Wentworth) Kimball-Vigue '02, '07, M.S. '15
 Greg King
 Richard Knight
 Ronald '68 and Helen Knox
 Casimer and Jeanette Kubisztal
 Robert and Lori Kuller
 Thomas LaBelle

Marc and Paula Lacasse
 Jennifer (Shelley) '05 and Derek LaCroix
 Richard and Verna Lagasse
 James and Kathryn Lambert
 Lana Lambert
 John '73 and Janice Lander P'20
 David '89 and Penny Laplante
 James and Cecile Laren P'17
 Thomas and Betty-Jo (Rogan) Largay P'98, P'00
 Joshua '04 and Alesia (Dalton) LaRoche '05
 Scott LaVallee P'17
 Ted Lawless '79
 Martin LeBlanc Builders, Inc.
 Wendy LeBlanc
 Joseph and Emily LeBoida
 Cathi Lee '83 🌟
 Dustin Leighton '12
 John and Dianne Lemoine
 Cindy and Doug Lepley
 William and Nancy Leppanen
 Stanley and Paige Lewiecki
 Kelly (Bell) '80 and Greg Lloyd
 Hope (LaChance) Lord M.S. '09
 Mason and Tabitha Lord
 Debra (Sprague) '76 and Charles Lovelady 🌟
 David '78 and Mary Lucius
 James Lunney
 Brenda (Lapointe) '82, '03, M.B.A. '08
 and Barry Lyons, Jr.
 Kent '81 and Susan Macleod
 Warren '89 and Melissa Maddock
 Roland '71 and Anna Marie Maheux
 Main Street Fuel
 Maine Red Claws*
 Mainely Brews*
 Reginald Malloy, II '88 and Kate Mullen Malloy
 Robin, Chris (Weber) '76, & Danielle Mangini
 Matthew '00 and Danielle (Bolduc) Marquis '00
 Jerry '79
 and Darlene (Dubord) Marstaller '94, P'06, P'08
 Kristin Masessa '12
 Daniel McClenahan and Diane Zavotsky P'17
 Jonathan McDonald '05, M.B.A. '05
 Crichton '04, M.S. '09
 and Amy (Khuu) McKenna M.S. '07
 Dennis and Michele McLaughlin P'19
 Penny McLaughlin
 Peter '69 and Jo Ann (Granata) McLellan '69
 Gerard and Bethany McMullen
 Mark McMullen
 David '66 and Mary (Smith) Mead '64
 Jose Mendoza
In honor of Isaiah Arana
 Marsha Merryman '97
 Brandon '12
 and Katie (Cirone) Meserve '13, M.B.A. '13
 Elizabeth Migneco
 Donna Miller and Leslie Jordan
 Vicki '92, '93 and William Mitchell
 Richard and Faith Moll
 Theocly Moll
 Kristin (Nielsen) '91 and Cressey Mollison
 Ian '02 and Elizabeth Moriarty
 Mount Desert Island High School
 Christopher Munn and Emily Moll P'19
 Thomas Murch P'17
 Alison Murray
 Erik M.B.A. '07 and Sara Nadeau M.S. '07
 Kim Nanouski
In honor of Madison Bentz
 James and Audrey Nelson
 New Dimensions FCU*
 Richard and Debora Newman P'16, P'17
 Wayne Niles '65
 North Country Rivers*
 Robert Nutting
 Lincoln and A. Faye Nye

Roberta (Julien) '89 and Tom O'Brien
 Jared '01 and Mary (Mersereau) O'Roak '01
 Jevon '04 and Joy (Ireland) Owens '06, M.B.A. '08
 PFG NorthCenter
 Carl and Virginia Paola
 April (Church) Paradis '06
 Terry and Linda Parlin
 Lee and Delma Patenaude
 Michael '92 and Carol Payne 🌟
 Dave and Sandy Peatfield P'16
 David and Barbara Peatfield
 Bradley '01, M.B.A. '07
 and Amanda (Knowlton) Pelletier '02, M.B.A. '06
 Christine (Campbell) '90 and Keith Perkins
 Christopher Perry, Sr.
 Jeffrey '78 and Margaret Peters
 Steven and Vickie Pike
 Pine State Trading Company*
 Ann (Cyr) '63 and Daniel Pinkham
 Robert Plato
 Peter and Jeanne Plowman
In honor of Ian King
 Scott Plowman '91, P'17
 Plumbing Masters of Central Florida, Inc.
 Orville and Eleanor Pollard P'83
 Portland Glass
 Robert Potter '86
 Kaley Poulicakos '14
 The Property Mart, Inc.
 Linton and Christina Quirion
 RSU # 18 Messalonskee High School
 R.T.D. Enterprises
 Dianne Rankin
 Charles M.B.A. '02 and Lorraine Ravis
 Charles Rawson '02 🌟
 Zahayra Razo '15
 Pamela J. Remieres-Morin '91, M.B.A. '98
 and Michael Morin
 Melissa Rice
 Sharon (Tyler) Ring '68
 Kent Rising and Dianne Warren
 Paul Robitaille
 Barry Rock '92, '94
 The Romandetti Family Revocable Living Trust
 David '76, M.B.A. '82
 and Suzanne (Morin) Ronan '69, P'08
 Robert Roy
 George and Tammy Rugh
 Melissa Russell
 William and Rebecca Sanborn
 Deborah (Brown) '83 and Rick Saucier
 Michael and Joyce Sawyer P'19
 Meredith Schalk '13, M.B.A. '13
 Nikolai Schlikin '69
 Seacoast Security, Inc.
 Brigham and Dawn Serman
 Sheila Serra
 Siena Fence Company, Inc.
 Douglas Simpson '92
 Floyd and Judith Smeltzer P'86
 Gregory and Janine Smestad
 James Smith and Beth Hartsock
 Sottak Orthopaedic & Surgical, Inc.
 Brett and Jennifer Sottak
 Lebaron and Betty Spaulding
 Norman and Janice St. Pierre
 Scott St. Pierre
In honor of Michaela Arsenault
 Michael Stang M.B.A. '00
 James Stewart
 Caroline Stewart
 Aaron Stred '08
 John and Vickie Sullivan
 Kathleen Sullivan M.B.A. '99
 Ronald '84 and Kris (Nickerson) Summit '84
 Albert, III '84 and Linda Swallow
 Michael Swanson

L. Tardif Jeweler*
 Edmond '71 and Janet Theriault
 Peter Theriault M.B.A. '07
 Susan and Eben Thomas
 Christopher and Bobbi Thornton
 Steven Tilley '79, M.B.A. '15
 and Pat Boone-Tilley
 Timm Real Estate LLC
 David Tirabassi '13
 Mark Titus
 Larry and Judy Toothaker
 Robert Touchette '02
 Linda Towle '80, M.B.A. '87
 Shane '96, M.B.A. '96 and Tricia (Bell) Trahan '97
 Wenda Travers
 Tree Spirits*
 Jill Trundy '97, M.B.A. '97



UBS Employee Giving Program
 Karen (Hebert) '83, M.B.A. '87
 and Scott Van Orman
 Michael '72 and Susan Vashon
 Carol Vinall
 Jessica Vinall
 Patricia Vintinner
 Crystal Walker
 Paul and Karen Watson
 Michael Watt '89
 Peri West
 Tammy (Martin) Weston '94 🌟
 Marjorie (Hassett) White '51
 Andrew '02 and Erica (Gallant) Whitten '03
 Dana Winslow '72
 Naomi '99, M.B.A. '01 and Kevin Wiswell
 John and Brenda Yeaton
 Dorna (Varnum) '63 and Tom Zilinsky
In memory of Ruth F. Loebs
 Michael and Gertrude Zirpolo

FRIENDS OF THOMAS COLLEGE

\$1-\$99

Anonymous (4)
 45th Parallel Corporation
 90s Nails and Spa*
 Brian and Toni Adams
 Robert Adams '92
 Advance Auto Parts*
 Jennifer Agger P'18
 Kathleen Aguirre
 Michael '84 and Diane Albano
 Victoria Alberghini
In honor of Sydney LeBourveau
 Erica (Martin) '95 and Mark Albert
 Jerome '67 and Elizabeth (Chase) Allen
 Lindsey Allen
 Lucas Allen '05
 Patricia Allen
 Richard and Laura Ambrozy P'19
 Amici's Cucina Italian Cuisine*
 Linda Anderson
 Michael Anderson
 C. Herbert and Grace Annis
 Apollo Salon and Spa*
 Leo Arsenault '54
 Shirley (McCarron) Ashmore '67
 Asian Café*
 Frank and Nancy Astuto
 Richard and Terri Atkins
 Kevin '11 and Brooke Averill

Bobbi Avery P'18
 Freda Bailey
 Barbecue Recreation, LLC
 Janet Bard
 Nicholas '15, M.B.A. '16 and Amanda (Brooks) Barish '13 🌻
 Rebecca Barnett
 Oranda Barter '06
 Christopher M.B.A. '99 and Yvonne Batson
 Bay Street Bakery*
 Barry Bean '01, '08
In memory of Kasi Gajtkowski
 Perley '62 and Suzanne Beane
 Marc Beaulieu
 Michelle (St. Jean) '89 and Daniel Beaulieu P'19
 Maurice Bedard and Donna DiBello
 Ronald and Barbara Beedy
 Joseph Beek
 Michelle (Closson) '02 and Stephen Begin
 Deborah Begin-Wyman '94, '96, M.B.A. '98
 and Roland Wyman
 Mark and Erin Bellaire
 Chelsea Bellows
 Julianne (Fabian) '92 and Michael Benecke
 Chad and Rebecca Bergeron P'16
 Wendy Bergeron
 Jarrod Bernosky '06, M.B.A. '06
 Betty Bickford
 Gerald '51 and Hilda (Baldic) Bickford '51
 Joan (Dow) Bickford '86
 Richard Biffle, III and Pamela Thompson
In memory of Richard A. Wirling, Jr.
 Christopher '93 and Laurie (Shores) Bilodeau '92
 Leta Bilodeau 🌻
 Sara Blakeman Duga
 Michael Blasco
 Stephen and Nancy Blodgett
 Michael Boardman
In honor of Randi Dennett
 John and Darlene Boissonnault
 James '08, M.B.A. '08 and Martine Boissonneault
 Randall and Lisa Bolduc
 Randolph and Shirley Bole
 Lenore (O'Connell) M.S. '99 and James Boles
 Jeannine Bosse '01, '03, M.B.A. '08
 Royal '91 and Lois Bouchard P'02, P'14
 Sandra (Moore) '79 and Mark Bouchard
 Erik Boudreault '16
 Rebecca (Bubar) Boulanger '80
 Laurie (Pottle) M.B.A. '06 and Eric Bourgoin
 Lucille Bowie
 Kelsey Bragdon
 Oliver Bray '60
 Brenda (Pomerleau) '75 and Daniel Breton
 Jessica Briggs
 William M.B.A. '85 and Gail Brooke
 Bruce Bryant and Linda Hollis
 Dean and Elizabeth Bryer
 Lauri (Gilday) '91 and Scott Buchanan
 Kathy (Clifford) '73 and Lloyd Buck
 Paul and Beverly Bucknam
 Bud's Shop 'n Save
 Bull Moose*
 Danielle (Sirois) '11, M.B.A. '13 and Daniel Burbank
 Julie (Lemieux) '64 and Lee Bureau
 Geoffrey '01, M.B.A. '03 and Erin (Hartley) Burnham '00
 Pamela (McGowan) Burns '67
 Deloris Burton
 Donald and Therese Caisse
 Donna Caisse
 Chad '10 and Christina Caldwell
 Joshua Cale
 Karen Call
In honor of Sarahjane Call
 Diane Camacho
 Barbara Camire
In honor of Kaeleigh Benson
 Ellen Campbell

Matthew '10 and Erin (Hill) Campbell '10, M.B.A. '10
 Cancun Mexican Restaurant*
 Susan Canino
 Carl Capato
 Rosemary Caporale '95
 Danny and Regan Card
 Sean Carey
 Thomas Carey '79
 Richard and Starlene Caron
 Ronald Caron
 Michelle Casavant
 Christopher Cassette
 Central Maine United Soccer Club
 John Chambliss
 Nancy Charette
 Randy Charette M.B.A. '96
 and Monica Wilcox Charette
 Brian and Mary Chase
 Amy (Rossignol) '01 and Jason Chasse
 Charles and Nancy Christie
 Lisa (Sillanpaa) '76 and Steven Cianchette
 Jennifer (Osmond) M.B.A. '96 and James Clair



Deanne Clark
 Robert and Beth Clark
 David '71 and Louise (Blanchard) Clement '71
 Cathleen Cloran '12
 Rene Cloukey, Jr. P'00
 Thomas Colgan and Judith Arbia-Colgan
 Paul '81 and Nanette (Philbrook) Collette '82
 Charles M.B.A. '93 and Leisa Collins 🌻
 Rebecca Collison
 Heath Colpack
 Midge (Waynen) '74 and Roger Concannon
In memory of Nina-Lee Warnick
 Marc M.B.A. '97 and Deborah Cone
 Stephanie Conlan
 Jillian Connor '07
 Debra (Shepardson) '83 and James Conrad P'19
 Philip and Michelle Contigiani P'19*
 Thomas '83 and Sherry Coore
 Brenda (Bragdon) M.B.A. '03 and Richard Lee Corthell
 James Cosgrove '95
 Thomas and Kelly Coucci
 Robert and Frances Courchesne
 Daniel Cournoyer
 Marc and Francese Cournoyer
 Patrick '92, M.B.A. '96 and Donna Couture
 Eric Covey and Helen Toomey-Covey P'16
 Laird and Marcy Covey
 Mark Covey
 Joyce Cravin
 Cameron Creamer '15, M.B.A. '16
 Jean '94 and Bill Croce
 Richard Crosby
 Wayne and Mary Cross
 Kelsey Crowe '13, M.B.A. '14
 Elizabeth Curtis
 Karen (Smith) M.S. '11 and Patrick Cyr
 Michael D'Orio
 Dairy Queen*
 Lynn Dalheim
 Jane Daly
 Carolyn Damren
 Andre and Tyla Dandeneau
 Bruce M.B.A. '98 and Kathleen Daniels
 Rachel Danner M.S. '05
 Scott '82 and Karen (Burpee) Danner '81, '83
 Bruce '74 and Pamela (Leighton) Dantzer '75
 Jacob Darveau '14, M.B.A. '15

Michael and Debra Daugherty
 Noah Davis '11
 Kenneth '86 and Nanhee Dechaine
 Jemelie Deering Bessett and Paul Bessett
 April Dehetre
 John and Cathy DeMerchant
 Randi Dennett
 Daniel DePalma
 Elena DePalma
 Jeffrey '93 and Stephanie Desjardins
 Detailz Hair Design*
 Jennifer Devou
 Joshua Devou
 Tina (Main) '89 and Rusty Dewsnap
 Perley Dexter
 Daniel and Darlene DiPompo
 Denise Dix
 Dobbs Productions, Inc.
 Mike Doherty
 Jonathan and Susan Doucette
 Downtown Smoothie*
 Eric '02 and Trisha (Cyr) Doyon '02
 Jill (Babcock) Drew '90
 Cathy Dube
 Crystal Dube
 Nicholas and Jessica DuBois
 Jeannette Duffau
 Scott Dumas '13 and Courtney Rustemeyer '13, M.B.A. '13
 Lisa Dumont
 Morgan Dunham
In memory of Everett Jordan
 Dunkin Donuts, Inc.*
 Lisa Dunning P'20
 Michael Dutka P'19
 Early Bird Restaurant*
 Tina (Bickford) '89 and Alan Easler
 Gayle (Labbe) Eaton '74
 Elisa (Paylor) Ellis M.B.A. '11
 Judith Ellis '64
 Thomas and Donna Elmer
 Kevin Elwell
 Michael and Margaret Emmons
 The End Zone*
 Barbara Esposito
 Dawna (Tilton) Esty '65, '82
 Christa (Haskell) '92 and Mark Fairbanks
 Terry (Whitten) '76 and Charles Fales
 Heather Farrell '01, M.B.A. '05
 Amanda (Welch) Favreau
 John and Peggy Filloramo
 Samuel Fisher '13
 Kelley Fitzpatrick '90, P'19
 Flagship Properties, Inc.*
 Shirley (Brooks) Flaherty-Browne '99, M.B.A. '08
 and Richard Browne
 Cheryl (Wakeham) '95, M.B.A. '09
 and Rusty Flewelling
 Almalee (Giggey) '64 and James Foote
 James Forker and Jennifer Henriques-Forker
 Dylan Foster
 Eleanor (Bailey) Foster '40, P'97, P'99
 Herbert and Nancy Foster
In memory of Ken Green
 Donald Fournier
 Jay Franzel
 Kimberly (Johnson) Frizzell '91
 Robert Frost '96
 Tammy (Folan) '97 and Nathaniel Fulling
 Katherine (St. George) '09 and Jeff Gagner
 Virginia (Waldron) Gallant '45
 John and Jacqueline Garafolo
 Michael and Patricia Garland
 Bruce Garrapy
In honor of Sydney LeBourveau
 John, Jr. '08 and Belinda Gaudet
 Laura Gelinas
 Peter and Deborah Gellerson

Derek '98 and Lori (Calley) Gervais '98
David N Gibbs Living Trust
Gifford's Famous Ice Cream*
Ronald Gilbert M.S. '81
Jeffrey Gillette
Edward and Melanie Gillick
Rachel Gillis
Brendan Gilpatrick
Norma (Leighton) '52 and Paul Giroux
Betty Glidden
Nick Godin
James '06 and Katy Godley
Jack Goldberg
Tanya Gonzales
Timothy Goodearle
David Gordon
Shauna Gordon
Danielle Grant
Donald and Sylvia Gray
Marsh Gray
Ryan '02

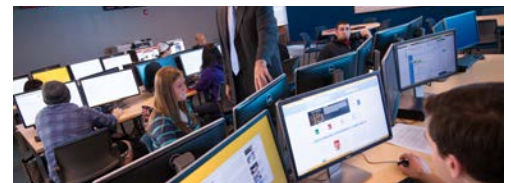
and Katherine (Hamann) Greenlaw '02, M.B.A. '10
Robert and Cathy Gregoire
David M.B.A. '86 and Roxanne Grenier
Seven (Lathrop) Grenier M.B.A. '08
Samantha Grimaldi
The Ground Round*
Ryan Guevin
Richard M.B.A. '92 and Ann Guttmacher
Timothy and Donna Gyorda
James '89 and Renee Hachey
Kailey Haight
Anne (Leadbetter) '72 and Robert Hall
John '84 and Heidi (Varnam) Hall '83, M.B.A. '11
Mark and Susan Hamberger
Carl M.S. '78 and Janet Hamilton
Hannaford*
Celestine Harnden
Jo-Anne (Doane) '94 and Jerome Harrell
Matt Harris
Joan (Abbott) '91, '97 and John Hassam
Timothy Hassett-Salley
Lucille (Fortin) Hawkes Maher '63, '65
Charlee Hayes '07
Eleanor '72 and William Hayes
Teresea M.B.A. '14 and Stephen Hayes P'07
Sonya (Martin) '97, '99, M.B.A. '00
and Adam Henderson
Richard Hendsbee '73
Mariah Henick
George Henry '51
Geoffrey and Sara Hensley
John and Heather Hobson
Pamela (Waltz) Hodsdon '67
Christopher '78 and Christine Holmes
Ronald M.B.A. '92 and Sharon (Hall) Holmes M.B.A. '96
Jeff and Carol Hoopingartner P'16*
Tracey Horton*
Katie Hoskins-Jose '07 and Nick Jose
Judy Hotham
Richard and Rita Howard
Patricia Hubel
Jessica Hudson '16
Darlene Hunt
Roland and Shirley Husband
Brenna Hutchinson '16
Michael and Donna Iacopucci
Inails and Spa*
InterVarsity at Toah Nipi Retreat Center
Kelsea (Kenyon) Jacobs '12
Judee Jandreau
Linda (Pillsbury) '64 and J. Bruce Jellison
John '79 and Lois Jensen
The Jewel of India*
Duane Jewell
In honor of Thomas Paola
Jin Yuan*

Sheila (Holmes) and Fred Jobber
Marcus-Alan Johnson '16
Tricia Johnson P'18
Warren Johnson
In honor of Curran Quinlan
Bernard '70 and Pauline Jolicoeur
Bridget Jordan
Deborah Jordan
Jorgensen's*
Douglas and Cheryl Joy
Gerald Joy, Jr.
In honor of Zach Mathieu



Deborah Joyce
Robert Judd
Janet Kane
Cyndy Kane Olson '77 and Christopher Olson
A.K. and Eileen Kapocius
Larry and Kathy Kapocius
Elsie Kavanagh
Kavanagh's Jewelry LLC
James Kelley
Norbert '48 and Nancy Kelley
Kathleen Kelly M.S. '80
Shawn and Melissa Kelly
Jacob Kendall
Troy '93 and Kimberly (Keefe) Kendrick
Shawn and Danielle Kennedy
Wendy (Aicher) and Jeffrey Kennedy
William and Janice Kennefick
James and Nicole Kenney
Karen King '77
Chris and Sharon Kinnear
Wesley and Gwendolyn Kinney
Peter Kirby
Reilly Kons
The Korner Store and Deli*
John Krainis
David and Debra Kramlich
In honor of Joe Quinlan
James and Beryla Kramlich
Thomas and Sarah Kramlich
Alexandra Kriegel '11, M.B.A. '12
Louise Labrie
Aurora LaClair
Michel and Gabrielle LaCroix
Cynthia (Magoon) '65 and Alvar Laiho
Valmond '68 and Elizabeth Landry
Darrin and Shelley Lane
Leonard Langlais
Harry, III M.B.A. '96 and Jennifer (Sterns) Lanphear 🌻
Jessica (Osgood) Laplant '00, M.B.A. '12
Charles and Johanna Laren
David '73 and Judy LaRochelle
Sandra (Strout) '86 and Joseph LaRose
William Larrabee
Andrew and Kathryn Larrow
Larsen's Jewelry*
Cody LeBlanc '15, M.B.A. '16
Michael LeComte
Marilyn Leimbach '99
Jeanette Lemay
James '74 and Rita Leonard
Annette (Choquette) '00 and Joseph Lepkowski
Linwood and Rita Lessner
Gary Levesque
Lucas '02 and Amy (Young) Levesque '04
Betty Libby
Matthew Libby '14, M.B.A. '14
Patricia (DeRoch) '77 and Steven Libby

Doris (Therriault) '71 and J. Harold Little
Joyce Little
Daniel Littlefield M.B.A. '95
John and Wendy Littlefield P'19
Lesley Litwiller
Vicki (Bell) M.B.A. '03 and Donald Lizotte
Jefferson Longfellow M.B.A. '03
Longhorn Steakhouse*
Loyal Biscuit Company*
Bruce and Denise Ludka
Jim Lunny
Carol (Champagne) Macarthur '64
Derek MacArthur
Brian and Irene Mackes
Marilyn Mackie
Madlyn's New & Used Consignment Shop*
Karen Madsen M.B.A. '95
Shauna (Bengtson) Magee '15
Alyssa Maggi
Robert and Antoinette Maggi
Paul '74 and Theresa Magro
Geraldine (Guerette) '65 and Donald Maheu
John Majewski
Nancy (Bumpus) '62 and James Manship
Sandra Marcoux
Margaret '76 and Donald Marden
Margo & Co Hair Salon & Day Spa*
Jeffrey '76 and Sandra Marshall
Mark Marsolais
Jean Martin
Mia Martino Yang '03 and Chris Yang
Pamela (Tardie) Mattos '96, M.S. '01
Kim Mazzarella
Carly McCarthy '14, M.B.A. '14
James McCartney
Tess McClenahan
George '69 and Minnie McCormick
Timothy and Sharon McDermott P'19
James and Mary McDonough
Emma McIlwain '14, M.S. '16
Kaitlin McKeel
Robert '73 and Peggy McKeone
McKesson Foundation
Dennis and Sandra McLaughlin
Sabrina (Redman) '87 and Timothy McLaughlin
Dylan McNally '15
Philomena McPhee-Brown '69, M.S. '01
and Dale Brown
Joan (Gagne) '63 and George Meier
Rick Melanson
Elizabeth Melson
In honor of Sarajane Call
Scott and Jennifer Mercier P'19
Meridians*
Lyndsi Merrill '16
Michael's Short Cuts*
Mid Maine Chiropractic, Inc.
Julie Middleton



In honor of Ashley Conrad '19
James and Judi Miller
Joan Miller
Ming Lee Chinese Restaurant*
Mirakuya Japanese Restaurant*
Robert and Barbara Moody
Seth Moody '08, M.B.A. '08
Tiffany (Willman) '12 and Willis Moody
Debra (Bernard) Moon '77, P'11
In memory of Craig Moon
Brian Moore

Francine (Larochelle) '77 and Mark Moore
 Elaine Moore McNamara and James McNamara
 Olivia Mora
 Luanne (Wigley) '84 and Daniel Morgan, P'18
 Charles Moriarty
 Colleen (Dyer) Morris '46
 Sherry Morrison M.B.A. '11
 Sonja Morse*
 Amanda Muise '12
 Charles and Karen Mulhern
 Scott '04 and Meaghan Mullen
 Michael Mundell '05
 Alfred and Linda Murch
 Debora '07 and Adam Muther
 Totiana Myers
 Robert M.B.A. '04 and Catherine Nadeau
 John and Noreen Nelligan
 Lindsey M.B.A. '13 and Matthew Nelson
 Toral Nelson '15
 Matthew Newell
 James and Janice Newett
 Brittany Newman '12
 Robert and Faye Newman
 Ryan Newman '16
 Newport Entertainment Center*
 Mary Nicholas P'19
 Edwin and Diane Nickerson
 Scott '83 and Sheila (Vashon) Nielsen '86, M.B.A. '91
 Stephen and Tracey O'Connell
 John O'Connor 🌻
 Oakland House of Pizza*
 Laurie P'17, P'18 and Howard Ochs
 Oli's Trolley, Inc.
 David and Kelly Olson
 Gary '91 and Rebecca Owen
 J. Peter Owen '86
 William Oxford '10, M.B.A. '10
 Donna (Gustafson) '08 and Anthony Pace
 Pad Thai Too*
 Papa John's*
 Kelly Paradis
 Paradis True Value
 Paragon Shop*
 Stephen Parent

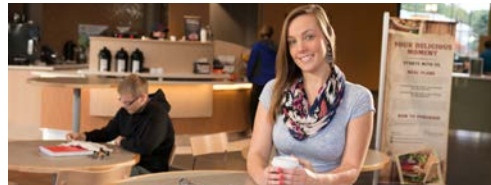
In honor of Lexi Jordan Colpack

John and Judith Parke
 Cheryl (Siekmann) Parkman '84
 Charles Parrott
 Maria Payne P'19
 Crystal Peatfield
 Joanna Peatfield-Patterson P'18
 Kolby '10 and Courtney Peckham
 Jenna Pederson
 Phyllis Pederson
 Alexander Pelletier '10
 Jody Pelotte
 Joseph and Christine Perault
In honor of Derek Kane
 James Perkins
 Karen Perry-Thames '93 and Wesley Thames
 David Pierrepont '70
 Max and Michelle Pina
 Cassidy Pinkham
 Jon and Geraldine Pinkham
 Kelly Pinney-Michaud M.B.A. '14
 Jason and Jill Piper
 Pizza Hut*

Christopher Plachowicz
 and Gina Garafolo-Plachowicz

Mark Plowman
 John Poirier, II and Laurie McReel
 Andrew Pooler
 Portland Pirates*
 Mary and Denis Poulin
 Judith (McCarten) M.B.A. '84 and Ford Powell
 Elizabeth (Carone) Preglovsk M.S. '11

Peter Profenno
 Danielle Provost
 PTG Properties, Inc.
 Ashley (Willoughby) Pullen
 Pamela (Richards) Pullen '68
 Purple Cow*
 Hunter Quinlan
 L. Andrew and Karen Quirion P'16*
 Railroad Square Cinema*
 David Rand '89
 Lori Rand
 Michael Rankin M.B.A. '15
 Abhisek '11, M.B.A. '11 and Katie (Raymond) Ray '10
 Linda (Witham) '72 and Robert Ray
 Red Barn Restaurant*
 Jennifer (Wilbur) '88 and Kevin Reed
 Erin Reinhard M.B.A. '15
 Remmes Orthodontics, P.A.
 Terri Reny
 Retail Therapy*
 Kristine Rice
 Kelli Rich
 Caleb Richardson '16
 Terissa Ridge '12
 Brian Riley and Marcela Papariley
 MacKenzie Riley
 Gail Rioux, Ph.D.
 Rita's House of Pizza*
 Riverside Kwik Stop*
 James and Donna Rivest
 Donald Roberts
 Hattie (Rood) '51 and Roderick Robinson
 Roger and Jeannine Robitaille



Sonia Robitaille
 Brad M.B.A. '14
 and Jessica (Wentworth) Rodrigue '06, '10, M.B.A. '14
 David and Judy Romano
 Louise Roming '09
 Jeffrey Ross
 Isaac and Tina Rossiter
 Jonte Roussel '15
 Catherine Routhier
 Joyce (Hunt) Rowe '54
 Bob '49 and Mary Rowell
 Tina (Lockard) '89 and Mervin Rowell
 Leo Roy '60
 Danny and Dee Runions
 Donald and Pamela Russell
 Melissa Russell
 Jasmine Ryan '13
 Michael Salas '16
 Michael Sales
 Merlene Sanborn
 Ralph and Kristi Sanfasin
 Michael '10, M.B.A. '10 and Brandi (DeBeck) Santo
 Michael '70 and Lourdes Sawyer
 David '87 and Kelley (Trial) Sayers '88
 Bruce '73 and Margaret (Lavallee) Scally '73
 Gail Schade
 Joshua and Brandi Schroeder
 Megan (Tapley) M.B.A. '09 and Corey Scott
 Joe Scozzafava and Dina Jeannotte
 Peter See and Mary Potter See
 Lee Seguin '11
 Timothy and Dena Seibert
 Selah Tea*
 George and Kelly Shanley
 Lenora Shannon '14, M.B.A. '15

Linda Shapleigh M.B.A. '96
 Andrew Shea
 Anne Sheble '87
 Shelby's Deli*
 Howard and Linda Shepardson P'83
 Delores Shields
 Paul and Joan Shinay
 Jordan Shubert and Lynne Santerre
 Scott '02 and Betsy (Pratt) Sibley '02
 Sign of the Sun*
 Cynthia (Jones) Simmons '89
 Krista (Salvas) '08 and David Sincyr
 Ron and Doris Skarka
 Barbara Small P'16
 Leroy Small
 Eileen Smith
 Elaine Smith
 Gary and Patricia (Froehlich) Smith
 Hariph M.S. '80 and Virginia Smith
 Joanne (Cough) '77 and Mark Smith
 Mary Jane Smith
 Rachel Smith
 Shane Smith
 Terry Smith P'18
 Solutions 2 etc.
 Sonny's Pizza, Inc.*
 Susan Soper
 Timothy and Tammy Sorby
 Sparetime Recreation*
 Andrea Spearin
 James and JoHannah Speltz
 John and Wendy St. Clair
 Roger and Joyce St. Pierre
 Jeremy Stanford '05
 Staples*
 Amy Staton '07
 Sterling Pest Control, Inc.
 Ida (Marks) Stevens '53
 Leanne (Tupper) M.S. '09 and Edward Stevens
 Cheryl Stimpson
 Michael '98 and Angela Stinchfield '97, M.B.A. '11 🌻
 Jack Stinemire and Johnna Aprile-Stinemire
 Gleason '69 and Pamela Sturtevant
 Jim and Jeanne Sullivan
 Peter and Nikki Sullivan
 Tracy Sullivan
 Rhoda (Colcord) Sutfin '75
 John Swan
 Kimberly Swan
 Peter and Terri Swanson
 Amy Sylvester '12
 Amanda Szala '99, M.B.A. '99
 Cynthia (Blanchard) '71 and J. Michael Talbot
 Taylor Excavation
 Kathryn Taylor
 Roland Taylor
 Sherry Taylor
 Taylor's Drug Store
 Terra Photography*
 Michele Tessier
 That Special Touch Salon and Spa*
 Anthony '90 and Gail Theberge
 The Thirsty Mule*
 Donald Thomas
 Regan Thomas '01, '06 and Thomas Mowry
 Cassandra (Audet) '16 and Attapoln Thoopsamoot
 Three Brothers Towing
 Andrea Thurston '15, M.B.A. '16
 Mallory Thurston '09
 Peggy Tilton
 Toast Xpress*
 Richard Toothaker
 Lois Tracy
 Bruce and Susan Tripp
 Charlene (Chasse) '66 and Wilfred Turgeon
 Thomas and Sherry Turmel P'16

Jason and Denise Turner
 Katharine (Lowell) '73 and Gregory Tyler
 The Upper Cut
 Scott '71 and Virginia Vaitones
 Elizabeth Valentine
 Courtney Veilleux
 Daniel '72 and Donna (Leblanc) Veilleux '72
 Michael Veilleux '02
 Jimmy '10 and Jen (Higgins) Veino '09, M.B.A. '12 🌻
 Richard and Patricia Vieta
 Phylliss (McLain) '03 and Peter Viets
 Brian and Betty Vigue
 John and Dianne Vigue P'19
 Natalie (Abraham) Viles '05
 Amy Violette
 D.H. Violette Investments/Donald '63
 and Jane (Perkins) Violette '61
 Alice Vom Orde
 Theodore Votie '52
 Bruce and Cynthia Walls
 John and Donna Walsh
 Joey Waraskevich
 Clarence and Karen Ward
 Dennis and Chere Ware
 Lorraine (Bernard) '75 and Douglas Wark
 Jody Warren
 Washburn Siding, Inc.
 Earl Watts
 Jason '16 and Sarah (Peterson) Webster '15
 Weeks & Sons Well Drilling
 Natalie West
 Shad and DeeLain West P'18
 Ryan Wheaton M.S. '13
 Darcy M.B.A. '01 and Nancy (Pratt) White '83
 Robert White, III
 Richard and Mary Kay Whitmore
 Janet (LaMontagne) Whitney '76
 David and Nancy Wilcox
 Emily Wilcox
 Mark Wild
 Darrell and Janet Wilkie
 Jeffrey '95 and Jessica Willett
 Wayne and Elizabeth Wiltshire
 Winthrop Veterinary Hospital, P.A.
 Jerome Wood
 Victoria (Hall) '79 and Steven Wood
 Ronald M.B.A. '11 and Nancy (Hoch) Woodbrey
 John and Mary Woodward
 James Worthington and Jayne Murphy Worthington
 Richard Wyman, Sr.
 Cynthia (Dearborn) Yachanin '91
 Michelle Yates
 Paul and Christine Young
 Sharon Zemla
 Kristin Zick
 Lori Ziegler
 Marcia Ziegler
 Peter and Tracey Zinck P'17

FACULTY & STAFF

Anonymous (8)
 Wallace Alexander
 Frank Appunn
 Erin Baltes 🌻
 Emily Bell 🌻
 Debra Biche-Labbe
 Richard Biffle, III
 Leta Bilodeau 🌻
 Michael Blasco
 Jeannine Bosse '01, '03, M.B.A. '08
 Kelsey Bragdon
 Bonnie (Dyer) Buckmore '13 🌻
 Jennifer Buker 🌻
 Erin (Hill) Campbell '10, M.B.A. '10
 Jamie Campbell P'18

Michelle Casavant
 Nancy Charette
 Shannon Combar
 Donald Cragen M.B.A. '13
 Emily Cummins
 Cheryl Daggett 🌻
 James Delorie M.B.A. '14 🌻
 Lisa M. Desautels
 Joe Donato
 Cathy Dumont M.B.A. '10 🌻
 Steven Dyer 🌻
 Thomas Edwards
 Amanda (Welch) Favreau
 Anthony Flye
 Dylan Foster
 Donald Fournier
 Beth B. Gibbs M.B.A. '93, P'12 🌻
 Peter Gilbert M.S. '78, P'99



Steven Giorgetti
 Jack Goldberg
 Timothy Goodearle
 Marsh Gray
 Michael Guarino '92, M.B.A. '92
 Judith Hansen-Childers M.B.A. '96, M.S. '98, P'01, P'16
 Geoffrey Hensley
 Kerry Hoey
 Tracey Horton
 Patricia Hubel
 Shonna Humphrey 🌻
 Michelle Joler-Labbe 🌻
 Jeffrey Kahl
 Rebecca Kane P'19
 Jonathan Kent
 Greg King
 Peter Kirby
 Alexandra Kriegel '11, M.B.A. '12
 Laurie (Gagnon) Lachance M.B.A. '92
 Darrin Lane
 Jason LaVerdiere 🌻
 Cindy Lepley
 Doug Lepley
 James Libby
 John Majewski
 Mark Marsolais
 Emma McIlwain '14, M.S. '16
 Philomena McPhee-Brown '69, M.S. '01
 Ellen McQuiston P'07
 Maryam Mermey
 Bob Moore '79
 Lindsey Nelson M.B.A. '13
 Brittany Newman '12
 Laurie Ochs
 Bernard Ouellette '92, M.B.A. '99 🌻
 Kelly Paradis
 Terry Parlin
 James Parsons
 David Pease
 Jenna Pederson
 Corey Pelletier '04, M.B.A. '12 🌻
 Mary Poulin
 Ashley (Willoughby) Pullen
 James Raddatz
 Darlene Ratte '86, M.B.A. '88
 Zahayra Razo '15
 Erin Reinhard M.B.A. '15
 Christopher Rhoda '88, M.B.A. '89
 Kristine Rice
 Melissa Rice

Mackenzie Riley
 Donald Roberts
 Jeffrey Ross
 David Roussel '93 🌻
 Jonte Roussel '15
 Catherine Routhier
 Michael Sales
 Merlene Sanborn
 Michael Santo '10, M.B.A. '10
 Rick Saucier
 Joshua Schroeder
 Joe Scozzafava
 Kerry Smart 🌻
 Shane Smith
 Kelly Stevens
 Angela Stinchfield '97, M.B.A. '11 🌻
 Joshua Sullivan
 Andrea Theborge M.B.A. '14
 Pamela Thompson
 Roberta (Cross) Tibbetts '69, '71
 Jimmy Veino '10 🌻
 Dog Wallace
 Joey Waraskevich
 Earl Watts
 Peri West
 Ryan Wheaton M.S. '13
 Robert White, III
 Richard Whitmore
 Michelle Yates
 Mikaela Ziobro M.S. '15 🌻

MEMORIAL DONATIONS

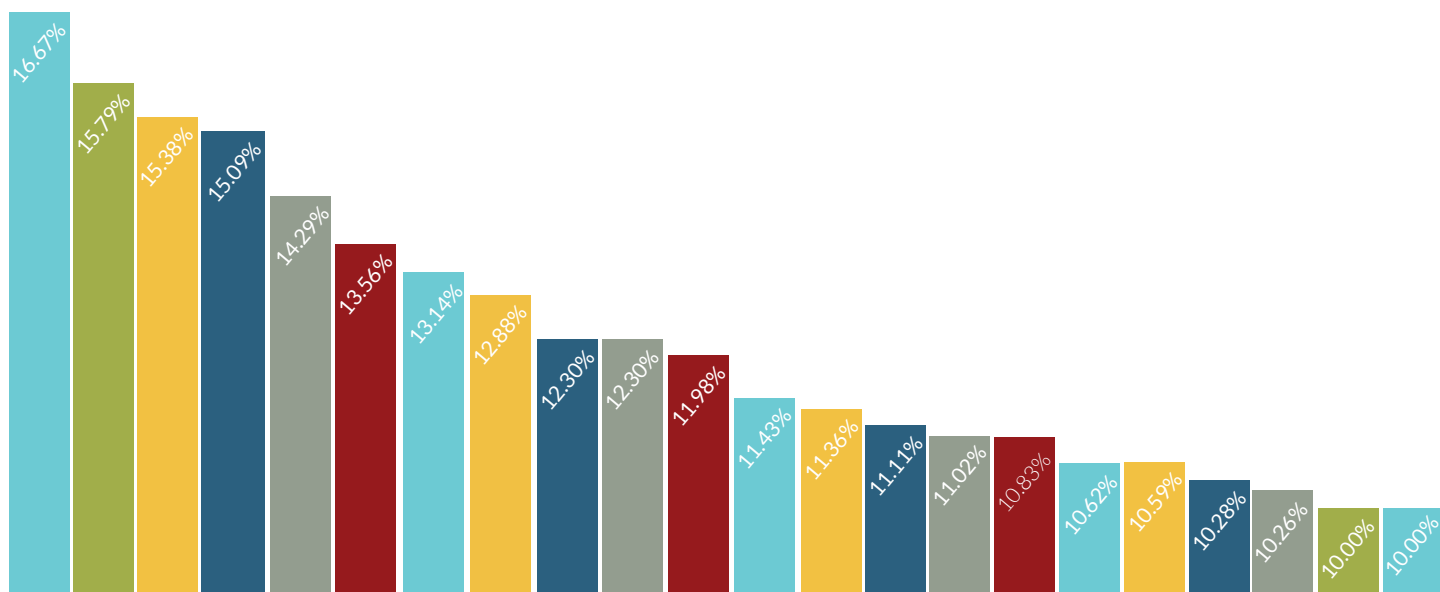
IN MEMORY OF LISA FORSLEY

Janet Bard
 Anne Bisson
 Country Cabinets, etc., LLC
 Amanda Drummond '12
 Alan Forsley
 Bruce Forsley
 Richard Forsley P'03, P'06
 Richard Forsley '03, M.B.A. '06
 John and Nancy Geljookian
 GHM Agency
 Dorothy Herbert
 Lisa (Bolduc) '98, '08 and David Leach
 Matthew Libby '14, M.B.A. '14
 Robert Nutting
 Robert Roy
 TJ and Kerry Smart
 Caroline Stewart
 Stephen and Cathy Stewart P'12
 Rick Whalen '93
 Sharon Zemla

Thomas College has created this publication to recognize supporters of the College. In compiling this list as of June 30, 2016, we have attempted to list every individual, family, and business who has contributed to Thomas College. Any error on our part is completely unintentional.

Please contact the Advancement Office with any questions or concerns at 207.859.1167 or veinoj@thomas.edu.

*Denotes an in-kind gift
 H - Honorary Degree
 P - Parent(s) of Thomas student(s)
 🌻 - Four Seasons Society Member



Alumni Giving to the Thomas Fund by Class Year

Twenty-one classes had a participation rate of 10% or more, helping Thomas achieve its highest giving level yet – 9.3%.



1940s

Eleanor (Bailey) Foster '40, P'97, P'99
Virginia (Waldron) Gallant '45
Colleen (Dyer) Morris '46
Susan (Crosby) Jacques '47
Norbert Kelley '48
June Price '48
Donna (Andrews) Bessey '49
Bob Rowell '49

1950s

Leland Bessey '50
Gerald Bickford '51
Hilda (Baldic) Bickford '51
Robert Grendell '51
George Henry '51
Hattie (Rood) Robinson '51
Marjorie (Hassett) White '51
Norma (Leighton) Giroux '52
Theodore Votie '52
Ida (Marks) Stevens '53
Leo Arsenault '54
Joyce (Hunt) Rowe '54
Ralph Gilman '56
Roland Huard '57
Philippe Hebert '59

1960s

Anonymous (2)
Oliver Bray '60
Leo Roy '60
Jane (Perkins) Violette '61
Perley Beane '62
Marie (Wing) Cutchin '62
Marie Deeb '62
Nancy (Bumpus) Manship '62
Lucille (Fortin) Hawkes Maher '63, '65
Joan (Gagne) Meier '63
Ann (Cyr) Pinkham '63
Donald Violette '63

Dorna (Varnum) Zilinsky '63
Julie (Lemieux) Bureau '64
Linda (Pillsbury) Jellison '64
Carol (Champagne) Macarthur '64
Nancy (Lemar) Marston '64
Mary (Smith) Mead '64
Dawna (Tilton) Esty '65, '82
Cynthia (Magoon) Laiho '65
Geraldine (Guerette) Maheu '65
Wayne Niles '65
David Mead '66
Charlene (Chasse) Turgeon '66
Jerome Allen '67
Shirley (McCarron) Ashmore '67
Pamela (McGowan) Burns '67
Judith Ellis '67



James Fitton '67
Pamela (Waltz) Hodsdon '67
Richard Holt '67
Joseph Fitzpatrick '68, P'90
Ronald Knox '68
Valmond Landry '68
Pamela (Richards) Pullen '68

Sharon (Tyler) Ring '68
David Hawkes '69
George McCormick '69
Jo Ann (Granata) McLellan '69
Peter McLellan '69
Philomena McPhee-Brown '69, M.S. '01
Suzanne (Morin) Ronan '69, P'08
Nicholai Schlikin '69
Gleason Sturtevant '69
Roberta (Cross) Tibbetts '69, '71

1970s

Anonymous (2)
Lawrence Davis '70, '74, M.S. '78
Bernard Jolicoeur '70
Lawrence LeClair '70
David Pierrepont '70
Michael Sawyer '70
David Clement '71
Louise (Blanchard) Clement '71
Bruce Fleischmann '71
David Gibbs '71
Doris (Therriault) Little '71
Roland Maheux '71
Janet (Mackay) Parkhurst '71
Cynthia (Blanchard) Talbot '71
Patricia (Mathieson) Tatham '71, M.S. '99
Edmond Therriault '71
Scott Vaitones '71
Michael Adams '72
Mark Bouvier '72
John Callahan '72
William Dubay '72
Anne (Leadbetter) Hall '72
Eleanor Hayes '72
Shirley (Merrill) Lidstone '72, '96
Linda (Witham) Ray '72
David Tibbetts '72
Michael Vashon '72
Daniel Veilleux '72
Donna (Leblanc) Veilleux '72
Dana Winslow '72

Joseph Barnes '73
Kathy (Clifford) Buck '73
Kurt Gilbert '73
Richard Hendsbee '73
John Lander '73, P'20
David LaRochelle '73
Robert McKeone '73



Bruce Scally '73
Margaret (Lavallee) Scally '73
Douglas Tatham '73
Katharine (Lowell) Tyler '73
Ryan Watts '73
Midge (Waynen) Concannon '74
Bruce Dantzler '74
Michael Deschaine '74, P'01
Gayle (Labbe) Eaton '74
Pauline (Harding) Gorham '74
Romance Hackett '74
James Leonard '74
Paul Magro '74
Pauline Bergeron-Flood '75
Brenda (Pomerleau) Breton '75
Pamela (Leighton) Dantzler '75
Erik Endresen '75
Roderick Pelletier '75
Rhoda (Colcord) Sutfin '75
Douglas Timm '75
Lorraine (Bernard) Wark '75
Lois (Brown) Ayotte '76
Lisa (Van Vranken) Bargsley '76
Lisa (Sillanpaa) Cianchette '76
Carolyn (Carpenter) Colpitts '76
JoEllen (Cuthbert) Cottrell '76
Bonnie (Smith) Dean '76
Terry (Whitten) Fales '76
Wayne Gove '76
Debra (Sprague) Lovelady '76
Christine (Weber) Mangini '76
Margaret Marden '76
Jeffrey Marshall '76
David Ronan '76, M.B.A. '82, P'08
Oscar Udoji '76
Janet (LaMontagne) Whitney '76
Conrad Ayotte '77, H'98
Bruce Bachelder '77
Paul Cottrell, Jr. '77
Michael Fitton '77
Paul Fortin '77, M.B.A. '86
Amber (Hall) Fournier '77
Marc Gendron '77
Katrina (Young) Gove '77
Diane (Gurley) Grandinetti '77
Lucy (Webb) Hardy '77
Kevin Joseph '77

Cyndy Kane Olson '77
Karen King '77
Patricia (DeRoch) Libby '77
Debra (Bernard) Moon '77, P'11
Francine (Larochelle) Moore '77
Susan (Pooler) Sevey '77, P'09
Joanne (Cough) Smith '77
Phyllis (Whiteman) Charette '78
Thomas Dean '78
Paula (Coolong) Gendron '78
Peter Gilbert M.S. '78, P'99
Gary Goldman '78
Charlie Greer '78
Carl Hamilton M.S. '78
Christopher Holmes '78
Daniel Kelsey '78
Jane (Etchie) Kennedy '78
David Lucius '78
Jeffrey Peters '78
Pete Plummer '78
David Sedler '78
Karen (McLean) Archer '79
Nancy (Gilbert) Bodine '79, M.S. '83
Sandra (Moors) Bouchard '79
Thomas Carey '79
Alice (Reeves) Darlington '79
Joseph Gasbarrone '79
John Jensen '79
Ted Lawless '79
Jerry Marstaller '79, P'06, P'08
Bob Moore '79
Valerie (Green) Plummer '79
Steven Tilley '79, M.B.A. '15
Victoria (Hall) Wood '79

1980s

Anonymous (2)
Bryan Barstow '80
Wendy (Iwans) Bean '80, '88
Matthew Bodine '80
Donald Borman M.B.A. '80
Rebecca (Bubar) Boulanger '80
Michael Charette '80
Linda (Kura) D'Avolio '80, '82
Jack Donilon '80
Maryanne Gawlinski '80
Sharon (Stone) Jacobs '80
Kathleen Kelly M.S. '80
Kelly (Bell) Lloyd '80
Russell Schmelzer, II '80
Barbara (Talbot) Sinclair '80
Hariph Smith M.S. '80
Richard Spellman M.S. '80
Linda Towle '80, M.B.A. '87
Kevin Vining '80, P'19
Wayne Winston '80
Clayton Churchill '81
Paul Collette '81
Karen (Burpee) Danner '81, '83
Ronald Gilbert M.S. '81
Craig Joseph '81
Kent Macleod '81
Robert Salvas '81
Richard Slingsby '81
Michelle (Gilmore) Thorpe Hayes '81, '83
John H. Andrews, CPA '82
Daniel Atkinson '82
Robert Clark '82
Nanette (Philbrook) Collette '82
Scott Danner '82
LaRue Hamilton '82
Scott Jacobs '82
Brenda (Lapointe) Lyons '82, '03, M.B.A. '08
Periann (Smith) Carl '83
Martin Connor '83
Debra (Shepardson) Conrad '83, P'19

Thomas Coore '83
Michael D'Avolio '83
Daniel Dumont '83
Colleen (Payne) Eugley '83, P'15
Douglas Eugley '83, P'15
Heidi (Varnam) Hall '83, M.B.A. '11
Arnold Hanscom '83, '86
Cathi Lee '83
Scott Nielsen '83
Lisa (Manson) Orkney '83
Deborah (Brown) Saucier '83
Laura (Polland) Sullivan '83, P'19
Karen (Hebert) Van Orman '83, M.B.A. '87
Nancy (Pratt) White '83
Michael Albano '84
Thomas Bullock '84
Elizabeth (Letourneau) Burgess '84
Robert Dion '84
John Hall '84
Paul LeBlanc '84
Luanne (Wigley) Morgan '84, P'18
Kevin Orkney '84
Cheryl (Siekman) Parkman '84
Judith (McCarten) Powell M.B.A. '84
Judith Richard '84
Kris (Nickerson) Summit '84
Ronald Summit '84
Albert Swallow, III '84
William Brooke M.B.A. '85
Robert Harriman M.B.A. '85
Charles Harris, II '85
Denice (Guenette) Harris '85
Matthew Babson '86
Joan (Dow) Bickford '86
Kenneth Dechaine '86
David Grenier M.B.A. '86
Lisa (Thibault) Hachey '86
Michael Hachey '86, M.B.A. '97
Sandra (Strout) LaRose '86
Sheila (Vashon) Nielsen '86, M.B.A. '91
J. Peter Owen '86
Robert Potter '86
Darlene Ratte '86, M.B.A. '88
Kevin Sullivan '86, P'19



Frederick Denico, Jr. '87
Lorraine Fellows '87
Jeffrey Hubert '87, P'14
Sabrina (Redman) McLaughlin '87
David Sayers '87
Anne Sheble '87
Brian Bernatchez '88
Daniel Burgess '88
Katherine Cahall '88, '91, M.B.A. '95
Reginald Malloy, II '88

Germaine Orloff M.B.A. '88
 Jennifer (Wilbur) Reed '88
 Christopher Rhoda '88, M.B.A. '89
 Kelley (Trial) Sayers '88
 Douglas Wilson '88
 Jennifer (Harmon) Wilson '88

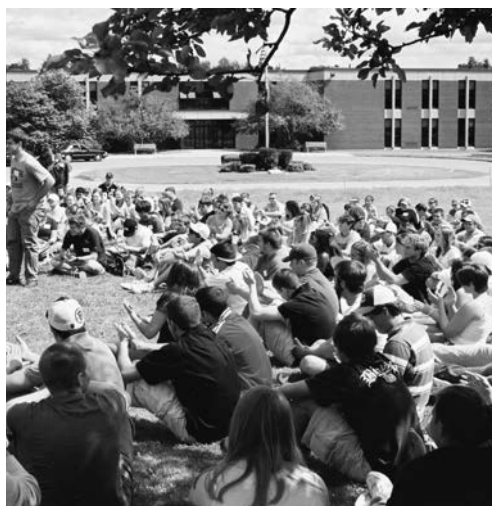


Michelle (St. Jean) Beaulieu '89, P'19
 Clifford Carter M.B.A. '89, P'19
 Tina (Main) Dewsnap '89
 Wendy (Mills) Dyer '89, M.B.A. '94
 Tina (Bickford) Easler '89
 Peter Ellis '89
 James Hachey '89
 David Laplante '89
 Warren Maddock '89
 Cindy (LaBarge) Monti '89
 Harry Monti, Jr. '89
 Roberta (Julien) O'Brien '89
 Brian Phillips '89
 David Rand '89
 Tina (Lockard) Rowell '89
 Jim Shimansky '89
 Kelley (Benoit) Shimansky '89
 Cynthia (Jones) Simmons '89
 Michael Watt '89

1990s

Anonymous (3)
 Paul Anderson M.B.A. '90
 Joan (Coleman) Beupre M.B.A. '90
 Bruce Campbell M.B.A. '90
 Scott Conant '90
 Jill (Babcock) Drew '90, P'20
 Kelley Fitzpatrick '90, P'19
 James Murton M.B.A. '90
 Christine (Campbell) Perkins '90
 Anthony Theberge '90
 Royal Bouchard '91, P'02, P'14
 Lauri (Gilday) Buchanan '91
 Jonathan Carr '91, M.B.A. '91
 Kimberly (Johnson) Frizzell '91
 Joan (Abbott) Hassam '91, '97
 Jim Lemieux '91, '94, M.B.A. '97
 Kim (Nadeau) Lindlof '91
 Kristin (Nielsen) Mollison '91
 Gary Owen '91
 Scott Plowman '91, P'17
 Pamela J. Remieres-Morin '91, M.B.A. '98
 Cynthia (Dearborn) Yachanin '91
 Robert Adams '92
 Julianne (Fabian) Benecke '92
 Laurie (Shores) Bilodeau '92
 Patrick Couture '92, M.B.A. '96
 Kellie (James) Guarino '92, M.B.A. '98
 Michael Guarino '92, M.B.A. '92
 Richard Guttmacher M.B.A. '92
 Ronald Holmes M.B.A. '92
 Lisa (Shores) Jacques '92
 Laurie (Gagnon) Lachance M.B.A. '92
 Vicki Mitchell '92, '93

Bernard Ouellette '92, M.B.A. '99
 Michael Payne '92
 Barry Rock '92, '94
 Michael Salisbury '92, P'20
 Douglas Simpson '92
 Todd Smith '92, M.B.A. '99
 Christopher Bilodeau '93
 Dean Bither M.B.A. '93
 Charles Collins M.B.A. '93
 Jeffrey Desjardins '93
 James Eastlack '93
 Beth B. Gibbs M.B.A. '93, P'12
 Troy Kendrick '93
 Gregory Korn '93
 Karen Perry-Thames '93
 David Roussel '93
 Rick Whalen '93
 Deborah Begin-Wyman '94, '96, M.B.A. '98
 Jean Croce '94
 Derek Daigneault '94
 William Flaherty M.B.A. '94
 William Fournier '94
 Jo-Anne (Doane) Harrell '94
 Mike Johnson '94
 George Keim '94



Albert Languet, III M.B.A. '94
 Nancy (Briggs) Marshall M.B.A. '94
 Darlene (Dubord) Marstaller '94, P'06, P'08
 Tammy (Martin) Weston '94
 Erica (Martin) Albert '95
 Robyn (Adams) Campbell '95
 Rosemary Caporale '95
 James Cosgrove '95
 Cindy (Morin) Daigle '95
 Cheryl (Wakeham) Flewelling '95, M.B.A. '09
 Julie (Parlin) Keim '95
 Lola (Guerrette) Korn '95
 Sara (Delgado) Languet '95
 Daniel Littlefield M.B.A. '95
 Karen Madsen M.B.A. '95
 Jeffrey Willett '95
 Randy Charette M.B.A. '96
 Jennifer (Osmond) Clair M.B.A. '96
 Robert Frost '96
 Judith Hansen-Childers M.B.A. '96, M.S. '98, P'01, P'16
 Sharon (Hall) Holmes M.B.A. '96
 Harry Lanphear, III M.B.A. '96
 Pamela (Tardie) Mattos '96, M.S. '01
 Keith Morneault '96, M.B.A. '96
 Linda Shapleigh M.B.A. '96
 Sean Trahan '96, M.B.A. '96
 Shane Trahan '96, M.B.A. '96
 Sonya (Martin) Henderson '97, '99, M.B.A. '00
 Susan (Quirion) Clary M.B.A. '97
 Marc Cone M.B.A. '97
 Tammy (Folan) Fulling '97

Marsha Merryman '97
 Angela C. Stinchfield '97, M.B.A. '11
 Tricia (Bell) Trahan '97
 Bruce Daniels M.B.A. '98
 Derek Gervais '98
 Lori (Calley) Gervais '98
 Lisa (Bolduc) Leach '98, '08
 Michael Stinchfield '98
 Christopher Batson M.B.A. '99
 Antoine Blais '99
 Lenore (O'Connell) Boles M.S. '99
 Shirley (Brooks) Flaherty-Browne '99, M.B.A. '08
 Marilyn Leimbach '99
 Kathleen Sullivan M.B.A. '99
 Amanda Szala '99, M.B.A. '99
 Naomi Wiswell '99, M.B.A. '01

2000s

Anonymous (3)
 Chad Boyd '00
 Erin (Hartley) Burnham '00
 Robert Dube, Jr. '00
 Nancy (Alexander) Fox '00, M.B.A. '02
 Jessica (Osgood) Laplant '00, M.B.A. '12
 Annette (Choquette) Lepkowski '00
 Danielle (Bolduc) Marquis '00
 Matthew Marquis '00
 Stephanie (Talbot) McNeal '00
 Michael Stang M.B.A. '00
 Jeannine Bosse '01, '03, M.B.A. '08
 Geoffrey Burnham '01, M.B.A. '03
 Carol Carew M.B.A. '01
 Amy (Rossignol) Chasse '01
 Sarah (Currier) Dube '01
 Lisa Fairbanks '01, '16, P'04
 Heather Farrell '01, M.B.A. '05
 Scott Fossett '01
 Gregory McNeal M.B.A. '01
 Jared O'Roak '01
 Mary (Mersereau) O'Roak '01
 Bradley Pelletier '01, M.B.A. '07
 Regan Thomas '01, '06
 Darcy White M.B.A. '01
 Joanne Allen '02, M.B.A. '02
 Barry Bean '01, '08
 Michelle (Closson) Begin '02
 Ryan Conley '02
 Susan (Conant) Cook M.B.A. '02
 Eric Doyon '02
 Trisha (Cyr) Doyon '02
 Brenda (Glidden) Drummond M.B.A. '02
 Dwaine Drummond M.B.A. '02
 Katherine (Hamann) Greenlaw '02, M.B.A. '10
 Ryan Greenlaw '02
 Chuck Hays M.B.A. '02
 Paula (Wentworth) Kimball-Vigue '02, '07, M.S. '15



Lucas Levesque '02
 Ian Moriarty '02
 Leslie (Bouchard) Parsons '02, M.B.A. '14
 Amanda (Knowlton) Pelletier '02, M.B.A. '06
 Charles Ravis M.B.A. '02
 Nikolas Ray '02, M.B.A. '07
 Betsy (Pratt) Sibley '02
 Scott Sibley '02
 Robert Touchette '02
 Michael Veilleux '02
 Andrew Whitten '02
 Brenda (Bragdon) Corthell M.B.A. '03
 Richard Forsley '03, M.B.A. '06
 Vicki (Bell) Lizotte M.B.A. '03
 Jefferson Longfellow M.B.A. '03



Mia Martino Yang '03
 Phylliss (McLain) Viets '03
 Erica (Gallant) Whitten '03
 John Bloemendaal M.B.A. '04
 Joshua LaRoche '04
 Amy (Young) Levesque '04
 Maren Madore '04
 Crichton McKenna '04, M.S. '09
 Robert Morin '04, M.B.A. '06
 Scott Mullen '04
 Robert Nadeau M.B.A. '04
 Jevon Owens '04
 Corey Pelletier '04, M.B.A. '12
 Jennifer (DeRoche) Pelletier '04, M.B.A. '14
 Eric Reddy '04
 Lucas Allen '05
 Tawny Alvarez '05
 Elizabeth (Pilsbury) Bridger '05
 Rachel Danner M.S. '05
 Walda (Simcock) Fitton '05
 Jennifer (Shelley) LaCroix '05
 Alesia (Dalton) LaRoche '05
 Jonathan McDonald '05, M.B.A. '05
 Michael Mundell '05
 Jeremy Stanford '05
 Natalie (Abraham) Viles '05
 Oranda Barter '06
 Jarrod Bernosky '06, M.B.A. '06
 Laurie (Pottle) Bourgoin M.B.A. '06
 James Godley '06
 Joy (Ireland) Owens '06, M.B.A. '08
 April (Church) Paradis '06
 Jessica (Wentworth) Rodrigue '06, '10, M.B.A. '14
 Walter Carlow M.B.A. '07, P'07, P'19
 Jillian Connor '07
 Robert Gagnon '07, M.B.A. '10
 Kari Grant-Gagnon '07, M.B.A. '09
 Charlee Hayes '07
 Katie Hoskins-Jose '07
 Amy (Khuu) McKenna M.S. '07

Debora Muther '07
 Andrea Rhoda M.S. '07
 Amy Staton '07
 Peter Theriault M.B.A. '07
 James Boissonneault '08, M.B.A. '08
 John Gaudet, Jr. '08
 Seven (Lathrop) Grenier M.B.A. '08
 Justin Miller '08
 Seth Moody '08, M.B.A. '08
 Donna (Gustafson) Pace '08
 Krista (Salvas) Sincyr '08
 Aaron Stred '08
 Kristi (Dellaway) Carlow '09
 Katherine (St. George) Gagner '09
 Hope (LaChance) Lord M.S. '09
 Louise Roming '09
 Megan (Tapley) Scott M.B.A. '09
 Leanne (Tupper) Stevens M.S. '09
 Mallory Thurston '09
 Jennifer (Higgins) Veino '09, M.B.A. '12

2010s

Anonymous
 Christopher Baez '10
 Chad Caldwell '10
 Erin (Hill) Campbell '10, M.B.A. '10
 Matthew Campbell '10
 Cathy Dumont M.B.A. '10, P'19
 William Oxford '10, M.B.A. '10
 Kolby Peckham '10
 Alexander Pelletier '10
 Katie (Raymond) Ray '10
 Michael Santo '10, M.B.A. '10
 Jimmy Veino '10
 Kevin Averill '11
 Melissa (Gouin) Baez '11, M.B.A. '11
 Danielle (Sirois) Burbank '11, M.B.A. '13
 Casey (Trask) Collins '11
 TJ Collins '11, M.B.A. '11
 Karen (Smith) Cyr M.S. '11
 Noah Davis '11
 Elisa (Paylor) Ellis M.B.A. '11
 Andrew Folan '11
 Alexandra Kriegel '11, M.B.A. '12
 Sherry Morrison M.B.A. '11
 Elizabeth (Carone) Prelgovisk M.S. '11
 Abhisek Ray '11, M.B.A. '11
 Lee Seguin '11
 Ronald Woodbrey M.B.A. '11
 Karen (George) Appunn M.S. '12
 Cathleen Cloran '12
 Jarod Deanis '12, M.B.A. '14
 Tanya (Berry) Deanis '12



Amanda Drummond '12
 Kelsea (Kenyon) Jacobs '12
 Nick Labbe M.B.A. '12
 Dustin Leighton '12
 Kristin Masessa '12
 Brandon Meserve '12
 Tiffany (Willman) Moody '12
 Amanda Muise '12
 Brittany Newman '12
 Terissa Ridge '12
 Kelly (Wood) Smith M.S. '12
 Amy Sylvester '12
 Amanda (Brooks) Barish '13
 Bonnie (Dyer) Buckmore '13
 Donald Cragen M.B.A. '13
 Kelsey Crowe '13, M.B.A. '14
 Scott Dumas '13
 Samuel Fisher '13
 Katie (Cirone) Meserve '13, M.B.A. '13
 Lindsey Nelson M.B.A. '13
 Courtney Rustemeyer '13, M.B.A. '13
 Jasmine Ryan '13
 Meredith Schalk '13, M.B.A. '13
 David Tirabassi '13
 Ryan Wheaton M.S. '13
 Joshua Clark '14
 Jacob Darveau '14, M.B.A. '15
 James Delorie M.B.A. '14
 Jaclyn Hartwell '14, M.B.A. '15
 Teresea Hayes M.B.A. '14, P'07
 Matthew Libby '14, M.B.A. '14
 Carly McCarthy '14, M.B.A. '14
 Emma McIlwain '14, M.S. '16
 Susan Moore M.S. '14
 Kelly Pinney-Michaud M.B.A. '14
 Kaley Poulicakos '14
 Brad Rodrigue M.B.A. '14
 Lenora Shannon '14, M.B.A. '15
 Andrea Theborge M.B.A. '14
 Nicholas Barish '15, M.B.A. '16
 Daniel Collins '15
 Cameron Creamer '15, M.B.A. '16
 William Janakis '15
 Cody LeBlanc '15, M.B.A. '16
 Shauna (Bengtson) Magee '15
 Dylan McNally '15
 Toral Nelson '15
 Michael Rankin M.B.A. '15
 Zahayra Razo '15
 Erin Reinhard M.B.A. '15
 Jonte Roussel '15
 Andrea Thurston '15, M.B.A. '16
 Sarah (Peterson) Webster '15
 Mikaela Ziobro M.S. '15
 Lucas Bohman '16
 Erik Boudreault '16
 Brenna Hutchinson '16
 Marcus-Alan Johnson '16
 Ryan Newman '16
 Caleb Richardson '16
 Michael Salas '16
 Jason Webster '16



Thomas COLLEGE | LUNDER SCHOLARS GOLF INVITATIONAL

BELGRADE LAKES SPONSOR

GREAT POND SPONSORS



Team Sponsors

Cross Insurance
Macpage LLC
PFG NorthCenter
H. Allen Ryan H'08
TSSD Services, Inc.

Business Sponsors

AAA - Northern New England
Baxter Brewing Co.
Cross Insurance
Macpage LLC
MaineGeneral Health
Marden, Dubord, Bernier & Stevens
WBRC Architects Engineers

In-Kind Donations

Augusta Country Club
Belgrade Lakes Golf Club
Best Western Plus-Waterville
Fortin's Home Furnishings
Hampton Inn Waterville
Joseph's Fireside Steakhouse
Mainely Brews
Meridians
North Country Rivers
O'Brien's Restaurant
Pointe Afta
The Proper Pig
Sodexo, Inc. & Affiliates
Selah Tea
Tree Spirits
Waterville Country Club
Westin Portland Harborview
Whitt's Garment Works

SNOW POND SPONSORS



LONG POND SPONSORS



Business Solutions
Business Simplified



Inland Hospital
EMHS MEMBER



THANK YOU!

Because of our fantastic sponsors and individual players who participated, we set a new fundraising record once again, generating net proceeds of \$61,741 – an increase of 32% over 2015 and an increase of 460% over the 2011 event, just five years ago. For the thirteenth consecutive year, the Lunder Foundation doubled the tournament proceeds, and a total of \$123,482 was added to the Lunder Scholars Endowment Fund at Thomas. Because of your help, a Thomas education is becoming more affordable – and thus, possible – for Maine students.

Please save the date for next year's event: Friday, September 15, 2017. We will, of course, be back at Belgrade Lakes and hope to see you there. And, we're very optimistic that the weather will once again be spectacular!



Highlights from

20

815

FULL-TIME UNDERGRADUATE STUDENTS



33

FULL-TIME GRADUATE STUDENTS



549

ON-CAMPUS RESIDENTS

18

INTERCOLLEGIATE ATHLETIC TEAMS



202

GRADUATED

16



\$2,315,486

RAISED FROM

1,423



donors



9.34%

ALUMNI PARTICIPATION RATE

138

STUDENT INTERNSHIPS



69%

FIRST-YEAR STUDENTS RETENTION RATE





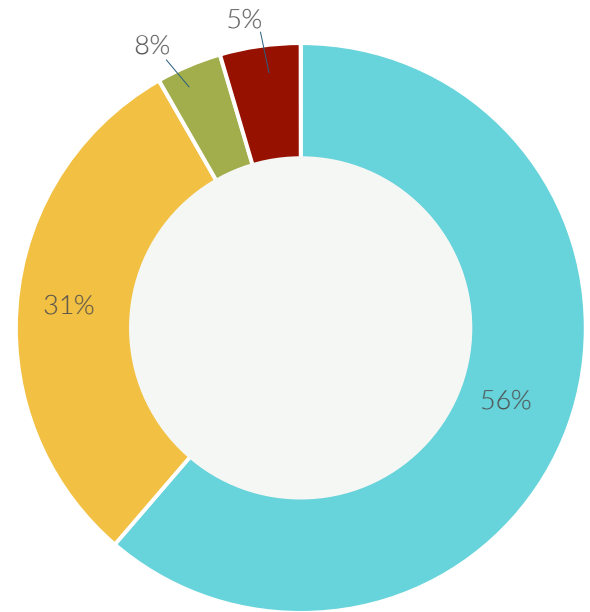
Financial Statements 2016

Statement of Financial Position

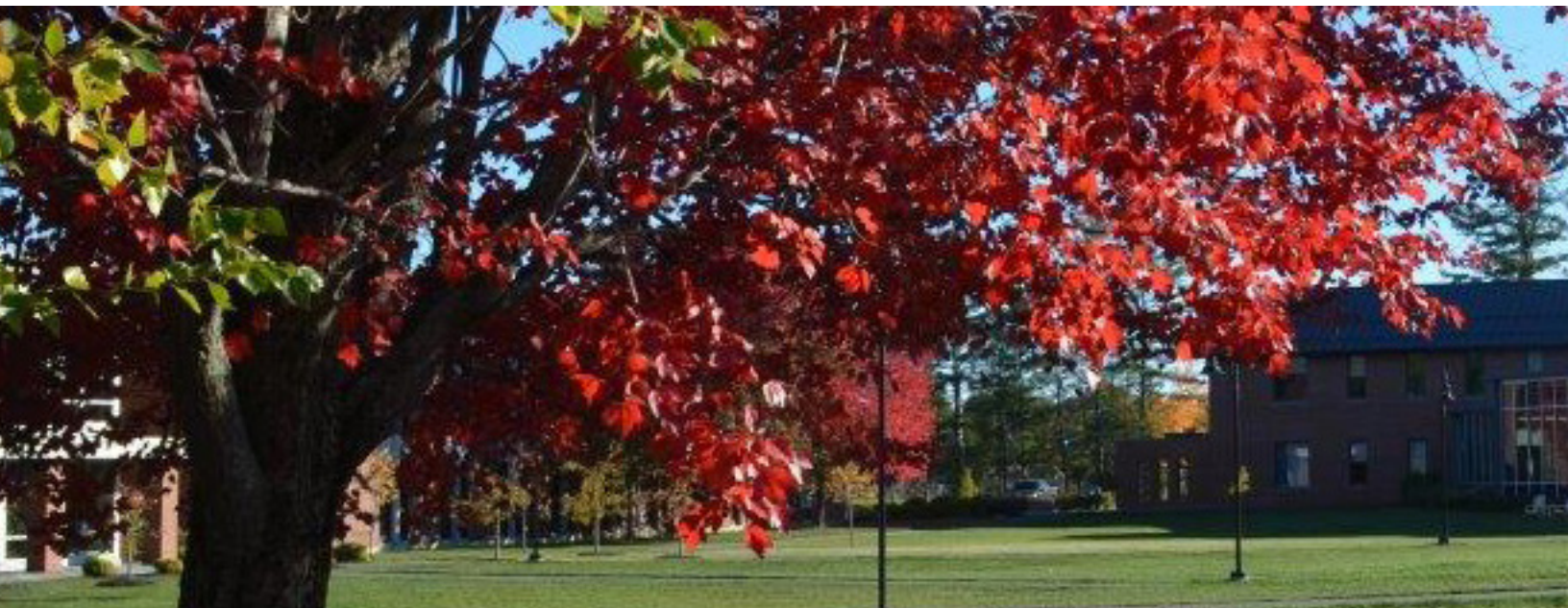
	6/30/2016*	6/30/2015
Assets		
Current Assets	\$ 17,241,558	\$ 17,465,542
Non-Current Assets	49,923,354	50,945,287
Total Assets	\$ 67,164,912	\$ 68,410,829
Liabilities		
Current Liabilities	\$ 3,835,030	\$ 3,921,412
Non-Current Liabilities	16,319,587	16,527,360
Total Liabilities	\$ 20,154,617	\$ 20,448,772
Net Assets		
Unrestricted Net Assets	\$35,553,170	\$ 35,769,424
Temporarily Restricted Net Assets	3,149,238	4,043,664
Permanently Restricted Net Assets	8,307,887	8,148,969
Total Net Assets	\$47,010,295	\$ 47,962,057
Total Liabilities and Net Assets	\$67,164,912	\$ 68,410,829

FY'16 Revenues

Tuition & Fees
 Sales & Service of Auxiliary Enterprises
 Contributions/Endowment Earnings
 Other Sources



* Fiscal year 2016 Unaudited



FY'16 Expenses

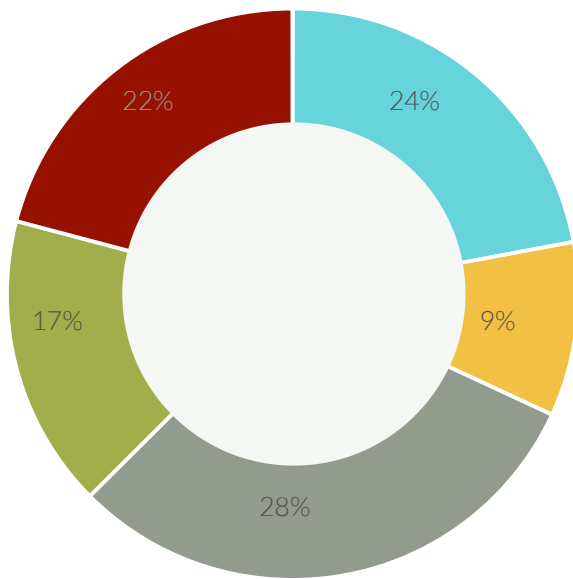
Instruction

Academic Support

Student Services

Institutional Support

Auxiliary Enterprises



Statement of Activities

	6/30/2016*	6/30/2015
Operating Activities		
Tuition & fees	\$10,882,823	\$10,602,990
Sales & service of auxiliary enterprises	6,063,548	5,248,449
Contributions	126,567	93,523
Government grants	600,982	432,167
Investment income	114,295	110,399
Endowment utilized for operation	352,500	315,527
Other sources	277,206	234,064
Assets released from restriction	981,372	361,191
	<u>\$ 19,399,293</u>	<u>\$17,398,310</u>

Operating Expenses & Losses

Instruction	\$ 4,638,830	\$ 4,140,439
Public service	15,542	20,068
Academic support	1,781,297	1,440,981
Student services	5,491,859	4,981,371
Institutional support	3,232,364	2,721,684
Auxiliary enterprises	4,190,345	3,866,044
	<u>\$ 19,350,237</u>	<u>\$17,170,587</u>

Changes in Net Assets from Operating Activities

	<u>\$ 49,056</u>	<u>\$ 227,723</u>
--	------------------	-------------------

* Fiscal Year 2016 Unaudited





Thank you!



THOMAS

180 West River Road, Waterville, ME 04901

www.thomas.edu