



SUMMER 2015

THOMAS

ANNUAL REPORT & MAGAZINE



2015 Commencement

Dan Feldman and Toral Nelson
Ready to graduate, ready to work.

- 6 **Kiest-Morgan Scholars, Fast-Track Students**
 Students are on the fast track to earning their degrees and being work-ready in three years.

- 8 **Jobs for Maine's Graduates**
 The partnership of Thomas with Jobs for Maine's Graduates has made the difference for so many.

- 10 **Corey Pelletier '04, M.B.A. '12 - Career Services**
 Meet Corey Pelletier, Director of Alumni and Career Services at Thomas. Learn how this new and innovative position has connected students with alumni.

- 12 **Turning College Years Into Fun Careers**
 Thomas College has some of the best alumni around. Read about the exciting work they have been doing since graduating.

- 14 **Catching Up with Dick Meader**
 Catch up with beloved former basketball coach Dick Meader, who was recently inducted into the Maine Basketball Hall of Fame.

- 25 **Annual Report FY '15**
 Thomas celebrates milestones from the past year. Thank you for your contributions and support of Thomas students.

- 34 **Snapshots**
 Take a quick look back at this year's achievements and celebrations.

- 5 **Letter from the President**
- 16 **Class Notes**
- 23 **In Memoriam**

On the cover:

Recent graduates Toral Nelson '15, and Daniel Feldman '14, both with degrees in Criminal Justice, are excited to graduate and start their careers.

Commencement 2015 was the largest graduating class in the history of Thomas College. Commencement speaker Bill Alford H'15 advised the class to "Use the skills and knowledge you have gained at Thomas to make the world a better place."

Congratulations to all of the 2015 graduates!



“Thomas has furthered my education and surrounded me with great people.

I play Tennis, run Cross Country, participate in the Music Club, and am a Student Ambassador. Through these activities, I see and appreciate the College’s forward thinking and movement. Our growth is possible with help from donors.”

Tyler Small, Class of 2016



FOUR SEASONS SOCIETY

When you join the Four Seasons Society, your monthly gift is automatically charged to a debit or credit card. Giving continues until you request that it stops, so you support Thomas students like Tyler year after year. And a modest monthly gift can really add up!



www.thomas.edu

EDITOR
Jennifer Buker

MANAGING EDITOR
Shonna Humphrey

COPY EDITORS
Bonnie Buckmore '13
Shonna Humphrey

CONTRIBUTING WRITERS
Erin Baltes
Jennifer Buker
Shonna Humphrey
Bob Moore '79

DESIGN
Jennifer Buker

LETTERS AND NEWS ITEMS WELCOME
The *Thomas Magazine* is published three times per year by Thomas College. Signed letters may be sent to the editor at Thomas College, 180 West River Road, Waterville, ME 04901 or e-mailed to pr@thomas.edu. Letters and news items may be edited for length and style.

MISSION
Thomas College prepares students for success in their personal and professional lives, and for leadership in their communities.

Board of Trustees

Board Co-Chairs

Conrad L. Ayotte '77, H'98
Todd D. Smith '92, M.B.A. '99

First Vice-Chair

Douglas L. Cutchin H'09

Second Vice-Chair

Brian M. Bernatchez '88

Secretary/Clerk of the Corporation

Kenneth P. Viens

Clifford C. Abbott, Jr.
William L. Dubay '72
Marc Gendron '77
Dr. Katherine Haley
Laurie G. Lachance M.B.A. '92
Gregory Piper
Dorcas B. Riley
Susan S. Roche
H. Allen Ryan H'08
William J. Ryan, Jr.
Howard E. Sevey
Kelley B. Shimansky '88, '89
Richard F. Spellman M.S. '80

Trustees Emeriti

Edwin P. Carboni
James Hennigar H'03
Susan B. Lavenson H'94

President's Council

President

Laurie G. Lachance M.B.A. '92

Provost

Dr. Thomas Edwards

Executive Vice President

Bernard "Bernie" Ouellette '92, M.B.A. '99

Senior Vice President and CFO

Beth Gibbs M.B.A. '93, P'12

Vice President of Advancement

Bob Moore '79

Vice President of Enrollment Management

Jonathan Kent

Vice President of Information Services and CIO

Christopher Rhoda '88, M.B.A. '89

Vice President of Student Affairs

Lisa Desautels-Poliquin

Academic Dean

Dr. James Libby

Assistant Vice President of Retention Services

Debbie Cunningham

Chief Human Resources Officer

Michelle Joler-Labbe

Dean of Advancement

Erin Baltes

Dean of Students

Hannah Gladstone

Director of Athletics

David Roussel '93

Executive Assistant to the President

Mikaela Ziobro M.S. '15



Dear Thomas family,

Greetings from Waterville, Maine! I hope you've had a relaxing and fun summer. It is a very exciting time of the year at Thomas, and I'm pleased and proud to share this combined alumni magazine and annual report for your reading pleasure! We had many accomplishments this year, and I hope you enjoy reading about all that is happening here on campus.

From a financial perspective, Thomas has, once again—and for 25 consecutive years—closed our books well in the black. Thomas also demonstrated record levels of alumni giving with a participation increase from just under 6% last year to more than 8% this year! Thank you to the active, engaged alumni who made this achievement possible.

In addition to being philanthropic, our alumni have developed many creative, interesting, and rewarding careers. We are proud of their professional achievements, representation of Thomas, and their willingness to pay this success forward by contributing to a positive experience for current students.

Last fall, Thomas welcomed the first on-campus Jobs for Maine's Graduates (and America's) College & Career Transition Specialist. This year we added an additional specialist, as well as new counselors in our Office of Retention Services. These new positions will help maintain our current trend of increased enrollment, retention, and graduation rates.

We also celebrated the largest expansion project in campus history, the opening of the Harold Alfond Academic Center and

Henry and Ellen Hinman Hall. Students began using the facilities in the 2014-2015 academic year, and these new buildings have already significantly improved the academic and campus residential experience.

The Career and Professional Development Office hosted our yearly Career Fair with a record number of students and alumni present. In honor of our diverse community, last year, we also added six nations to our Hall of Flags and held our second annual Diversity Conference, "Moving Beyond Racism," in February.

To help foster the total student experience and build traditions, Thomas launched the first-ever "Dirty Dog Mud Run" with 300 participants registered. It was a huge success!

Thomas has a newly designed website, in addition to updated branding materials. Our visual identity now more closely aligns with our energy level and spirit—vibrant, growing, engaged, and excited! We are proud, developing, maturing in quality, and innovating. As we make strides in the face of enormous economic and demographic challenges, these accomplishments are worth celebrating.

I invite you to visit our campus and see for yourself, and I thank you for your support. Together, all things are possible.

Sincerely,

Laurie G. Lachance, M.B.A. '92
President



Kiest-Morgan Scholars Fast-Track Undergraduates

By Shonna Humphrey

With support from the Davis Educational Foundation* in the 2014-15 academic year, Thomas College initiated a pilot program for high-achieving students to complete their degrees in just three years, allowing them to enter the workforce or attend graduate school a full year early. As part of this model, students complete six traditional courses each fall and spring semester—and four online, intensive courses—to fulfill the 120-credit degree requirement.

Named the “Kiest-Morgan Scholars Program” in honor of Thomas College’s original founding as Kiest Business College and subsequent re-branding as Morgan Business College, this name signals the program as a selective, competitive option with historical institutional significance for students, while honoring Thomas’s reputation as a career-oriented college.

Thomas projected an initial enrollment of 15 students and a retention rate of 70%. These goals were exceeded when 21 students enrolled in Fall 2014, and three students transferred into the program. All 24 students pre-registered for Fall 2015, indicating a remarkable 100% retention rate at the end of the first academic year.

“I would absolutely recommend this program. I think the sooner a person can finish school and start gaining experience in the workforce and in the real world, the

better,” said Kiest-Morgan Scholar Shelby Watson ’17. While it is too early to quantify graduation rates, Thomas is on track to graduate Kiest-Morgan Scholars at a significantly higher rate than their peers—70% vs. 50% in a traditional cohort.

The initial proposal to the Davis Educational Foundation anticipated that Kiest-Morgan Scholars would complete 42 credits in their first year at Thomas, but students in this program are projected to complete an average of 48 credits at the end of their first year—a full semester ahead of their counterparts.

In addition to the accelerated pace, the quality of academic achievement is equally impressive. At the end of the spring 2015 semester, Kiest-Morgan Scholars earned an average cumulative GPA of 3.58. In comparison, first-year students in a traditional cohort earned an average of 33 credits, with an average cumulative GPA of 2.92.

Reducing the cost of higher education is a shared priority for both the Davis Educational Foundation and Thomas College, and bottom line: Kiest-Morgan Scholars will graduate ahead of schedule and with less debt. Ultimately, this translates to students becoming employed sooner with in-demand skills, and at higher salaries with means to more easily repay any debt they do incur.

Students in the program are currently on track to complete as scheduled, with an overall savings of at least 25%, or \$23,460—the equivalent of one full year of college costs in the traditional four-year model.

“The Kiest-Morgan program saves me money while also allowing me to join the workforce and pursue a career faster than I would have been able to otherwise,” said Nick Chamberlain '17.

The Kiest-Morgan Scholars Program gives students greater options and flexibility. Students can choose to be career-ready in three years or choose to enroll in Thomas College's already established Accelerated MBA program with the goal of completing both Bachelor of Science and Master of Business Administration degrees in four years.

*The grant was received from the Davis Educational Foundation, established by Stanton and Elisabeth Davis after Mr. Davis's retirement as chairman of Shaw's Supermarkets, Inc.

“The Kiest-Morgan program saves me money while also allowing me to join the workforce and pursue a career faster than I would have been able to otherwise.”

Nick Chamberlain '17



"Students are facing major adjustments in their lives, but they can depend on JMG's support."

*Matt Reynolds,
JMG Specialist*



Jobs for Maine's Graduates

By Shonna Humphrey

In 1993, Maine's Legislature created Jobs for Maine's Graduates (JMG), to include goals aligned with the State's workforce development efforts: improve Maine's graduation rate, address the skills gap, and strengthen the workforce by preparing students for the demands of today's job market.

Prior to last August, JMG was available to students at participating Maine middle or high schools only. In August 2014, Thomas College, the Unity Foundation, and JMG collaborated to place the first (and only) JAG specialist in the United States at an institution of higher education.

Today, JMG provides mentoring and counseling services, course guidance and graduation planning, and peer support services and financial guidance to 56 Thomas students, all who participated in middle or high school JMG programs. Having JMG on campus at Thomas ensures that these support services continue throughout a student's college experience.

Student Nicole Padilla '18 said, "When I thought of furthering my education at Thomas, I was scared. I thought I'd have to face college alone. But, when I found out Thomas had a JMG program, I was ecstatic!"

After just one semester, JMG students returned to Thomas at an 88% rate vs. 84% of their non-JMG classmates. College and Career

Transition Specialist (and 6-year JMG veteran) Matt Reynolds deserves much of the credit for this increased retention. He was hired to help students navigate the often-challenging path to graduation. "I'm their one, big constant. The students have graduated from high school; many have moved away from home. They're facing major adjustments in their lives, but they can depend on JMG's support."

At a time when school budgets and services were being slashed, JMG dramatically expanded its programs – more than doubling the number of students served between 2008 and 2014. Now JMG works with more than 5,000

students in grades 6-12, in 79 school-based programs. JMG's retention rate is 96%, and the 4-year high school graduation rate is at least 90%. The continued education rate is 52%, a number that is expected to increase with JMG presence at Thomas. Said Thomas President Laurie Lachance, "In 2007, Thomas realized the connection between student support and retention and invested by hiring a Dean of Retention Services. In 2010, we ramped up that commitment with expanded student support services, and we are now seeing the results of that strategic investment."

Since both Thomas and JMG are respected members of the education and labor communities in Maine, they are often called on to share their expertise and opinions on matters related to education reform and workforce development.

The success of the Thomas-JMG model has recently led to a bi-partisan legislative effort to fund and expand a JMG presence at other Maine college and university campuses. State Senate Democratic Leader Justin Alford said, "JMG students are a success story across Maine's middle and high schools. And now, as Maine tackles this issue of degree completion, it only makes sense that we would build upon a proven model and existing relationships."

By modeling a partnership between organizations serving a similar constituency

and sharing the same overall goal to reduce the social and economic cost of higher education, Thomas and JMG have positioned themselves as national leaders as well.

Says Craig Larrabee, President and CEO of JMG, "At JMG, our primary goal is to help students overcome barriers on the path to a successful career and meaningful life. This includes the high cost of a college education. Our Teaching Specialists connect high school students with a variety of resources that can mitigate that financial burden. Thomas College has the same philosophy. This partnership is not just about handing out diplomas and degrees, it's about setting young people up for success."

"When I thought of furthering my education at Thomas, I was scared. I thought I'd have to face college alone. But, when I found out Thomas had a JMG program, I was ecstatic!"

Nicole Padilla '18

Corey Pelletier '04, M.B.A. '12

By Erin Baltes

Corey Pelletier used to serve on the Thomas Admissions staff, encouraging high school students to choose Thomas. When he had the opportunity to continue guiding them as Director of Alumni and Career Services, he jumped at it, and he now aids students and graduates in their career planning and professional development.



A: I love to see them explore, inquire, and step outside their comfort zones to learn about opportunities after Thomas. The earlier students know what is available, the more control they have on the path they take to get there. They proactively seek internships, courses, community service projects, and summer

employment, and they focus on skills that will prepare them.

Q: Alumni Relations and Career Services merged two years ago to become Alumni & Career Services. How has the merger helped students and graduates?

A: We have enhanced student programming by involving more alumni, who are relatable and incredibly helpful. Plus, alumni know that the College can assist them. Combining the two departments was unusual, but now universities like Columbia and Colby are taking similar approaches, which just validates what we are doing here.

Q: What is the role of career preparation in the Thomas student experience?

A: Career preparation is the root of why students choose Thomas, so our office plays a big role. We want students to understand what opportunities are out there from day one. Once they know, they can make more informed decisions on how to prepare and qualify for them. We facilitate career education that not only allows students to find that first job, but also provides them with the tools to grow careers.

Q: Readers might know the Guaranteed Jobs Program. What changes have been made to it and why?

A: In addition to the GPA and internship criteria that have always existed, requirements in leadership, community service, and career development encourage students to aim higher. These additional experiences help them build relevant skills for their personal and professional lives.

Q: What do you want to see our newest students do to prepare for life after graduation?

Q: Internships are a big focus at Thomas. How do students pursue them? What are the benefits?


A: Students discover internships in many ways: from our office, an advisor, family, and classmates. Internships are huge contributors to early success; studies show that students who complete internships have an easier time landing their first jobs and are more likely to start out making more money. Students also make a lot of professional connections, and because of the timing of internships – typically later in students' academic careers – these connections often lead to job offers. Take Toral Nelson, for example [featured on the cover]: she did a criminal justice internship while she was here and since graduating, she has accepted a job with the Maine State Police.

Q: How have alumni gotten involved?

A: Alumni get involved in a number of areas, from representing their employers at our annual career fair or joining career panels to acting as mentors or hosting students at their employers for informational sessions. Volunteering is a very rewarding way for alums to give back. It is also a good excuse to get back on campus!

Q: Speaking of jobs, what do you most enjoy about yours?

A: Each semester, I hear students' presentations on their completed internships. The difference in the way they carry themselves after an internship is amazing. My dream is that all Thomas students will have the opportunity to complete internships.



“I love to see students explore, inquire, and step outside their comfort zones to learn about opportunities after Thomas.”

Corey Pelletier '04, M.B.A. '12

Turning College Years Into Fun Careers

By Erin Baltes

Alumni working in a variety of fields have used their Thomas education to build interesting careers. In many cases, what started as fun jobs or internships were catalysts for meaningful and stimulating work after graduation.

For example, President of New England Country Music Productions Mike Flanagin works with musical acts to book, market, and produce concerts. He has worked with the Rolling Stones, Kenny Chesney, Carrie Underwood, The Eagles, and hundreds more.

"I got my start at Thomas when I was in a band called 'The Gross National Product,'" Mike recalls. "All our members were Thomas business majors." Having produced shows as a student, he got a call for help from Colby College when Janis Joplin performed at their Winter Carnival in 1969. "I learned everything at Thomas because of wonderful professors like Marie Deeb, Maroon George, and Nelson Madore."

Now, when asked what the best part of his job is, Mike says, "Standing in the middle of Gillette Stadium on a warm summer night, knowing my work was instrumental in selling out a show."

Not every job involves a rock concert; many Thomas grads have found themselves thrilled to have great roles that marry their majors to their careers. "During my junior year, I had an internship that let me put everything I had learned in the classroom to use," says Jillian Sloban '12, M.B.A. '12, a Marketing and Communications Specialist at Mercy Hospital in Portland. "The experience was so validating to me because I knew I had chosen the right career path." Those same skills, she says, helped her transition seamlessly after graduation to the job she loves at Mercy.

Similarly, Ben Fairclough '04 says that while he majored in Sports Management, he learned about many specialties within the field -- ultimately guiding him to combine Sports Management and Information Technology. Today, Ben is General Manager of Crossfield Digital, a newly created, full-service mobile and web software development agency that provides solutions for the sports industry.



Jarod Deanis '12, M.B.A. '14 took a slightly different route to his job. After earning his undergraduate degree, Jarod took on a management position at a large department store. While he was challenged, he soon started to pursue a change in track. He says, "That's when I decided to pursue my Master's degree. I wanted that lift that comes with getting your MBA, plus the expanded networking opportunities." Jarod enrolled in

Thomas's Accelerated MBA program. He also took on an internship with Dexter Enterprises, home to the Harold Alfond Foundation. His work to streamline functions within their operations was so impressive that Dexter Enterprises offered Jarod a full-time job after graduating. Today, Jarod plays an important role in helping to oversee grant making to charitable organizations.

Thomas prides itself on helping students like Ben, Jillian, and Jarod solidify career plans. (See more about Alumni & Career Services in a profile of Corey Pelletier on page 10.) For some others, however, decisions were made a little earlier.

"There were only two occupations that interested me since I was 11 years old: being a State Trooper and a United States Secret Service Agent," says Jim Fitton '67, now retired and living in Texas. "After Thomas, I applied to the Maine State Police and was accepted in June 1970. I worked as a trooper until I was recruited by the Secret Service. I became a Special Agent in 1975 and held that job for 27 years." Not surprisingly, Jim remembers his career fondly. "I was able to visit, in an official capacity, most of the countries in the world. I also had access to the White House every day while protecting the President; I saw and heard things that most people will never see or hear."

Alumni, regardless of your graduation year, Thomas is here for you; to explore a job change or take your career to the next level, contact Corey Pelletier, Director of Alumni and Career Services, at pelletierc@thomas.edu or (207) 859-1106.

Shirley Edbrooke '83, Founder and Managing Partner of The Edbraham Group, a national recruiting firm with expertise in both direct marketing and technology.

The coolest part of her job? "Match maker, match maker, make me a match!" she jokes. "I'm good at understanding needs and proposing solutions, and I enjoy doing it." Says Shirley of her time at Thomas, "I learned leadership skills through my work-study jobs in the Admissions Office and the Pub, participating in intramurals sports and freshmen orientation, acting as Captain of the first women's soccer team, serving on student government and the judicial committee, and becoming President of my senior class."

Thomas gave me some of the most important and lasting relationships of my life, and that experience and those people gave me the confidence to know I can do whatever I set out to do, both personally and professionally."



Javier Abascal Carrasco M.B.A. '14, Big Data Engineer, Gennion

After graduating from Thomas, Spain native Javier returned to his home country to work at the start-up tech company Gennion. Though the firm is small, with just 12 employees, Javier and his colleagues use big data.

"Imagine that you go shopping in a mall working with Gennion. You visit three shoe stores but do not buy anything. Our sensors, located in the mall, capture your activity and realize that you are looking for shoes. Our system sends a push notification to your cell phone, giving you information about the mall's other shoe stores. It also shows you a map from your current position to the next relevant retailer."

Javier adds, "We can show clients how people move in their buildings, how much time they spend in each store, who are repeat customers, and how they react to our actions, like the cell phone notification. We continue to impress our clients, and that's hugely satisfying."



Chris Doherty '09, Golf Pro, Brunswick Golf Club

As a Management major at Thomas, Chris picked up skills in business, marketing, and personal communications that help him on the golf course. "My time at Thomas College built my confidence, which really helps in meeting new people for golfing lessons or business networking. I also learned a lot about creative marketing strategies and managing a successful business."

Chris notes that the Brunswick area is a very competitive golf market, but because of his Thomas education, he has used

creative marketing strategies to help the club succeed. "Some of our 'outside-the-box' marketing – using fundraisers, special events, and lessons to draw in new players – have been really effective."

"I was involved in an event where I played 121 holes in one day! We generated \$7,000 for the golf course to buy a new piece of equipment which helps to improve our greens on a daily basis."



Kris Gagnon '11, General Manager, Monkey Trunks Adventure Park

"We're in the business of fun!" is how Kris describes Monkey Trunks. Kris spent many hours of his summers working at the ropes and zipline park with two locations in New Hampshire and one in Maine. "As much fun as I have on all of our attractions, I get even more enjoyment seeing our customers have a blast."



"I started out working on the courses during my summers off from school; taking advantage of every hour I could scrounge up helped me get a promotion to the Park Manager position the following year," he recalls. "After graduating from Thomas, I was hired full time as the Operations Manager. Six months later, I took over as General Manager. Having a strong foundation from Thomas allowed me to be flexible and jump into any role that was needed or requested of me."

Kris adds that the leadership role has enabled him to try out other parks and travel extensively. "Staying flexible and constantly learning more has given me the opportunity to see adventure parks and ride ziplines throughout the U.S., Germany, and Jamaica."

Dick Meader

By Bob Moore '79

A member of the inaugural (1994) class of the Thomas College Athletic Hall of Fame, Coach Richard "Dick" Meader has been showered with more accolades this summer, as he was inducted into both the New England and Maine Basketball Halls of Fame. Born and raised in Solon, Maine, Dick's college coaching career began at Thomas in 1971. After 17 years as the head coach of the Terrier's men's basketball program, Dick has spent the past 23 years as the men's basketball head coach at his alma mater, the University of Maine at Farmington.

Prior to beginning his coaching career, Dick was a highly accomplished player. Upon graduating in 1968, he was UMF's all-time leader in points scored, including 40 points as a freshman in a game vs. Bridgewater State – with 19 consecutive foul shots! As a senior, the 5'7" Meader was the top vote getter in being named to the first Maine Men's Basketball Coaches and Writers Association All-State team.

Over his 40-year college coaching career, Coach Meader's teams have won nearly 450 games, and he has no intention of slowing down. Named "Maine Coach of the Year" ten times, Meader, along with retired Colby College Coach Dick Whitmore, also co-founded Pine Tree Basketball Camp. Operating for 37 years, the highly acclaimed camp provided instruction to thousands of young boys and girls on the sport of basketball – including three NBA coaches and three NBA players.

Vice President of Advancement Bob Moore '79 recently sat down with Coach Meader to reflect on his accomplishments.

Q: Two Halls of Fame in one year! How cool is that?

A: Well, I think all it really means is that I've been around for a long time! Seriously, it's a real honor. I've been fortunate to have some tremendous players over the years – at Thomas I coached players such as Joe Deroche, Charlie Greer, Charlie Ryan, John Madden, Steve Busque, and Chris Blodgett to name a few. I think I'm getting the recognition now because of all the success they and their teammates brought to the program and to me personally.



Q: You starred at Solon High School and later at UMF in both basketball and baseball. What was it like growing up on a farm in rural Maine?

A: My Solon High School class had just 16 students – 12 boys and 4 girls. There weren't any organized sports until I got to high school, and even then, the baseball

team had only six games per season! As the oldest of four boys growing up, my brother Bob '69 and I played hoops for hours in our barn, or baseball on a makeshift diamond in one of the fields – but only after all the chores were done. Because they often needed bodies to field a full team, prior to high school, I was often called upon to play on the town men's baseball and basketball teams.

Q: Leaving Solon and going to Farmington must have been a big change. Was the move easy for you?

A: To say I was a bit shell-shocked would be an understatement! I was an introvert and had limited exposure to the outside world; for example, I rarely dined at a restaurant or attended a play before I arrived at UMF. I had no clue about dining etiquette or table manners.





Left - Dick Meader coached and inspired young men on the Thomas Basketball team from 1971 - 1988.

Opposite page - Dick Meader's Induction Ceremony into the Maine Basketball Hall of Fame, Cross Center, Bangor - August 23.

Bob Moore '79, Coach Meader, his wife, Betty-Jane Meader, and Charlie Greer '78

Q: Table manners – so that's where Betty-Jane comes in?
(Editor's note: Dick and long-time Thomas Professor Betty-Jane Meader have been married for 47 years, and are the proud parents of sons Lance and Daren – both of whom played for their father at UMF – along with their four grandchildren.)

A: My freshman year at Farmington State College (now UMF), I dreaded Saturday nights. Male student-athletes were required to wear a tie to dinner, and I usually ended up sitting beside a home economics major. With my shyness and lack of confidence, I was extremely uncomfortable. I swore I would never marry a home economics major – and look what happened. I ended up falling in love with –and marrying – the Emily Post of Farmington!

Q: How'd you get your start in coaching?

A: Since junior high school, I always knew I wanted to be a basketball coach. I was fortunate to have some great mentors, even though I had just three coaches throughout my entire playing career. At Solon High School, Ray Leary coached both basketball and baseball. Ray was a Thomas graduate (1960) and actually taught at Thomas for a couple of years later on. At UMF, Roger Wing was the athletic director and coached basketball and baseball my freshman year. That summer, he hired a Springfield College graduate who had a profound impact on me as a coach and as a person – Len MacPhee, who served UMF students for 36 years, including 24 years as men's basketball head coach.

After graduating, I coached the freshman team at Nokomis High School in Newport. Later, while pursuing a graduate

degree at the University of Maine at Orono, I was a graduate assistant under men's coach Skip Chappelle. While Betty-Jane and I were attending a hockey game at Colby College, Rod Redding, Thomas's Provost at the time, told me that Thomas was opening a new campus, and that they were looking for a men's basketball coach/physical education instructor and someone to teach in the fashion merchandising program. That's what brought Betty-Jane and me to Thomas.

Q: You took a break from coaching between Thomas and UMF. How come?

A: When our sons started high school, I stopped coaching so I could follow their careers. A few years later, the position at UMF became open, and I've been there ever since.

Q: So no thoughts on retiring anytime soon?

A: I love coaching so much, I wish I could go back and start all over again. I go to the office every day. I still enjoy learning about the game. And I like working with young people.

And seeing former players and students of mine going on to be successful coaches themselves gives me a real sense of pride – people like Al Veneziano, Jamie Beaudoin, Travis Magnusson, Tyler Tracy, Mike Soucy, and Ed Thompson.

I've been fortunate to have the coaching I've had, and to be doing what I've always wanted to do. I love being called "Coach" – coaching is my identity.



Alumni Class Notes

1975

Luc Pepin was recently named Finance Director at Kennebec Valley YMCA in Augusta, ME.

1977

Randy Phair has accepted the position of account executive with Fairpoint Communications in the Greater Lewiston/Auburn, ME area.

1981

Ken Claflin has been named President of SmartStore Business Intelligence Solutions in Scottsdale, AZ.

1984

Jay Tilley has accepted the position of Senior Vice President - Director of Operations with Saco & Biddeford Savings Institution in the Greater Portland, ME area.

1987

Mark Andrews has accepted the position of experience consultant with Cigna, covering NH and VT.

1988

Allen Look was promoted to Executive Director, Global IT with SI Group in Schenectady, NY. Allen has been in progressive positions with SI Group since 2001.

Mary (Noddin) Morris has accepted the position of Accounting Manager with Eastern Maine Healthcare Systems in Brewer, ME.

1990

Robin Goodwin M.B.A. was promoted to Chief Executive Officer of The Montalvo Corporation, based out of Gorham, ME.

Matthew Ham M.B.A. was promoted to Senior Vice President, Senior Change Director in Change Management at TD Bank in South Portland, ME.

Dana Therrien has accepted the position of Research Director, Sales Operations Strategies with SiriusDecisions, working out of the Lewiston/Auburn, ME area.

1992

Sherri (Sawyer) O'Donnell has accepted the position of Enterprise Architecture Program Director with Maine Mutual Group in Presque Isle, ME.

Michael Salisbury was promoted to Managing Director with Quantrix in Portland, ME.

Wesley Stevens '92, '94 was promoted to Business Banker/Vice President with Bangor Savings Bank in Ogunquit, ME.

Lynn (Cochran) Wilson M.B.A. has accepted the position of Director, Natural Resources with Louisiana-Pacific in Nashville, TN.

1993

Glenn "Rick" Whalen has accepted a position as a financial advisor with Choice Investments in Waterville, ME.

Kevin Winfrey was promoted to Chief Information Officer at Tilson Technology Management in Portland, ME.

1994

Jennifer (Carter) LaRocque has accepted the position of Senior Technical Project Manager – Red Team with General Electric in their Information Security Technology Center in Glen Falls, VA.



1970

A beautiful spring in Maine is a great excuse for a friendly alumni reunion on the coast! Alumni (L to R) **Dan Sharkey '70**, **Mike Flanagan '72**, **Larry Davis '70**, **'74**, **M.S. '78**, **Tom Nale '70**, **Ed Theriault '71**, and **Kevin LeClair '70** gathered in Bath – the group's first get-together since 1970.

Congratulations!

Alumni couple and former Thomas Trustee **Don '63 and Jane (Perkins) Violette '61** celebrated their 50th wedding anniversary on October 10, 2014. It has been a year full of celebration for the couple who has been able to share in the milestone with many friends and family across the state of Maine.



1995

Sonya (Libby) Garlock was promoted to Manager of Finance and Analytics at BlueTarp Financial in Portland, ME.

1997

Scott Hood '97, M.S. '98 and Joseph Harrison '15 were married on March 8, 2015, in Winter Park, FL.

Michael Quinlan is now Managing Partner at Rockwell & Quinlan CPAs, Inc. in Caribou, ME.

1998

Dawn (Santoro) Palmer is now Director of Human Resources at Skills, Inc. in Waterville, ME.

Alan Plummer has accepted a position in the Associate Center for Employee Health Services Info Systems at MaineGeneral Health in Waterville, ME. He has also been involved in a new collaborative project – The Tiny Soul-ar ECO Village.

1999

Nick Berry has accepted a position as a veterans service representative with the VA Regional Office Pension Management Center in Milwaukee, WI.

2000

Jenny (Leigh) Boyden M.B.A. has accepted the position of Finance Director at HealthReach Community Health Centers in Waterville, ME.

Sharon (McCorrison) Gates M.S. and her husband Brady Gates welcomed their daughter Emily Elizabeth Gates at Central Maine Medical Center on March 9, 2015. She was born at 9:54 a.m., weighed 7 pounds, and was 19 inches long. Her siblings are Ethan, Austin, and Isabelle.

Dan Thibeault was promoted to Director of Shared Services with Verso Corporation in the Miamisburg, OH facility.

2002

Christy Sirois has accepted the position of Office Manager and accountant with Ed Pelletier & Sons Co. in Madawaska, ME.

2003

Ryan Beaudette has accepted the position of Audit Manager with CHAN Healthcare in Lewiston, ME.

2004

Cintya (Paschoaloti) Bailey M.B.A. has accepted the position of Regulatory Compliance Manager with Consolidated Asset Management Services in Bucksport, ME.

Jonathan Brown was promoted to Vice President – Middle Market with Bank of America Merchant Services in the greater Atlanta, GA area.

Jon Fullerton has accepted a position with Tufts University School of Dental Medicine as the Dental Practice Manager, Predoctoral Clinic Administration in Boston, MA.

CJ McKenna '04, M.S. '09 was promoted to Assistant Dean of Enrollment Management with Kennebec Valley Community College in Fairfield, ME.

Ryan O'Donnell has accepted the position of territory manager with R.H. Foster in the Greater Bangor, ME area.



Alumni Class Notes



August 2014: Alumni celebrate at the wedding of Tyler & Alex Kent at Jonathan Edwards Winery in Stonington, CT. Alex is the daughter of Dave '78 & Mary Lucius.

Guests included: Dr. Nelson and Paula Madore M.B.A. '93, P'04; Pete '78 and Valerie (Green) Plummer '79; Dave '78 & Diana Sedler; Michelle (Jandreau) '76;78 and Doug Cahill; Chris '78 & Christine Holmes; John '78 and Debbie Barlock; Matt '80 & Nancy (Gilbert) Bodine '79, M.S. '83; Dan '78 & Judy Kelsey; Bob '79 & Susan Moore M.S. '14; Tom '77 and Paula (Ramos) McGeary '77; Charlie '78 & Nancy Greer.

2005

Mary (Pratt) Hastings has accepted a position as a legal assistant with the Franklin County District Attorney's Office in Farmington, ME.

Jenny (Shelley) LaCroix was promoted to National Sales Practice Development Director with UNUM in Portland, ME.

Jonathan "Jack" McDade has recently launched his own company Wilderborn, LLC, based in upstate NY, specializing in full-scale web design and development services.

2006

John Fate was promoted to Associate Relations Manager with Hannaford Brothers Company in China, ME.

Nicole Merryman has accepted a position as a housing specialist with Shalom House, Inc. in Portland, ME.

2007

John Bonang has accepted a position as a marketing representative with Code Gratitude in the MidCoast region of ME.

Ryan Landry '07, M.B.A. '07 has accepted the position of Assistant Vice President Systems Management Engineer with Camden National Bank in Gardiner, ME.

2008

Laura Dunham has accepted a position with Panera Bread as a shift supervisor in Nampa, ID.

Lea McNary-Hanson has accepted a position as a registered nurse with Hospital for Special Care in New Britain, CT.

Bryan Willett M.B.A. was promoted to Area Business Manager at DePuy Synthes Mitek Sports Medicine in Dallas, TX.

2009

Tim Hartin has accepted a position as a communications associate with the Metropolitan Golf Association in Elmsford, NY.

Shane Kibler '09, M.B.A. '10 has accepted a position in commercial sales with F.W. Webb in South Portland, ME.

Amy (Shirley) Quirion, her husband Kevin, and son Luke, welcomed a new baby, Ryan James Quirion, into their family on December 7, 2014. Amy has also started her own business Mainely Fence in Winslow, ME, which manufactures fence for all of New England.

Chelsea Reynolds '09, M.B.A. '09 recently completed her last portion of the CPA exam and has been promoted to Audit Manager with Baker Newman Noyes in their Portland, ME office.

Cory Worcester was promoted to Loan Services Assistant Manager at Bangor Savings Bank in Bangor, ME.

2010

Kenny Bickford was promoted to Production Manager at J.S. McCarthy Printers in Augusta, ME.

Trent Bryson was promoted to Assistant Store Manager with The Home Depot in Augusta, ME.

Brittany (Gardiner) Dunn and Jay Dunn are proud to announce the birth of Cohen Jay Dunn on March 21, 2015, at MaineGeneral Medical Center in Augusta, ME. Cohen was 6.9 pounds and measured 20 inches in length.



Alumni Class Notes

Jared Fieldsend '10, M.B.A. '10 has accepted the position of Production Director for Pack Network, based out of Boston, MA.

Brad Marin M.B.A. is now an engineering supervisor at Bath Iron Works and architectural designer for Whipple Callender Architects.

Branden Perreault '10, M.B.A. '10 has accepted the role of Deputy Finance Director for the town of Brunswick, ME.

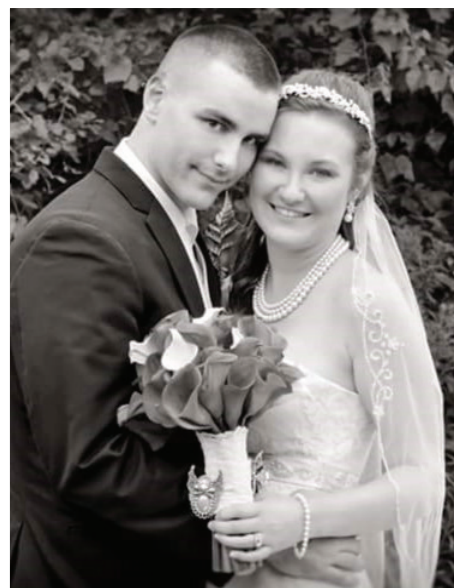
Ben Rhein M.B.A. was promoted to Replenishment Manager with Delhaize

America in Scarborough, ME.

2011

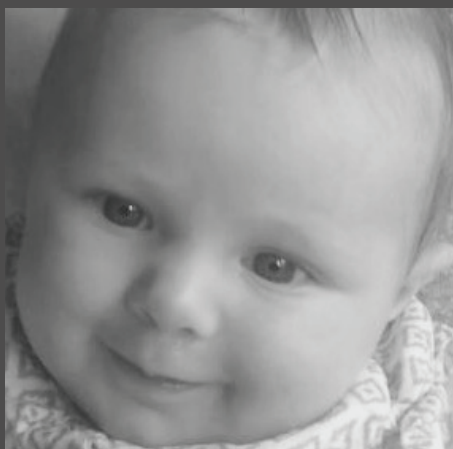
Dan Brannigan has accepted a position as a support staff member for the Special Education Department with Oak Hill High School in Wales, ME. Dan is also the Varsity Lacrosse Head Coach at Oak Hill.

Don Cowles married Brooke Clement on July 26, 2014, at the Federated Church in Skowhegan, ME, followed by a reception at the Elks Lodge in Waterville, ME. The couple enjoyed their honeymoon in Virginia Beach, VA.



Tiny Terriers!

Thomas loves baby and family photos! Send us your best family photos for everyone to celebrate. Alumni and friends would enjoy seeing you and your family - children or your furry friends!



Top (L - R): **Sharon Gates M.S. '00** - Emily Elizabeth Gates, March 9, 2015; **Isaiah Brathwaite '12** - Quinton Zachary Brathwaite, April 23, 2015; **Samantha Pelkey '12 & Thomas Beaudoin '13** - Grady Pelkey Beaudoin, April 22, 2015.

Bottom (L - R): **Amy (Shirley) Quirion '09** - Ryan James Quirion, December 7, 2014; **Brittany (Gardiner) Dunn '10** - Cohen Jay Dunn, March 21, 2015.



Alumni Class Notes

Jenn Hatch has accepted the position of Employee Relations Coordinator with Digital Prospectors Corporation in Exeter, NH.

Scott Migliore has accepted a position as Business Development Representative with Plixer International in Kennebunk, ME.

Katlyn Nemi has accepted the position of oncology nurse at Brigham and Women's Hospital in Boston, MA.

2012

Tom Bird has accepted the positions of Men's Basketball Coach, Women's Volleyball Coach, Assistant Athletic Director and Sports Information Director with the University of Maine at Fort Kent.

Isaiah Brathwaite and Cortney Barrett are proud to announce the birth of their son Quinton Zachary Brathwaite on April 23, 2015. Quinton weighed 8 pounds 10 ounces and measured 21 inches.

Josh Gray has accepted the position of Finance Manager at Bill Dube Ford Toyota Scion in Dover, NH.

Antonio Juco has accepted a position as sales consultant at Kinney Office Systems in Bangor, ME.

Clay Landry has accepted a role as Force Protection with Triple Canopy in Kuwait.

Joshua Linscott has accepted a position as IT help desk analyst with Cianbro in Pittsfield, ME.

Brandon Meserve was promoted to IT Systems Specialist with Medical Care Development, Inc. in Portland, ME.

Patrick Nethercott has accepted the position of assistant golf professional at Cohasset Golf Club in Cohasset, MA.

Samantha Pelkey and **Thomas Beaudoin '13** are proud to announce the birth of their son Grady Pelkey Beaudoin on April 22, 2015, at Wentworth-Douglas Hospital in Dover, NH. Grady weighed 9 pounds.

Nick Schauwecker was promoted to Summer Camp Director, along with his current role as Assistant Director of Sports at West Suburban YMCA in Newton, MA.

2013

Thomas Beaudoin and **Samantha Pelkey '12** are proud to announce the birth of their son Grady Pelkey Beaudoin on April 22, 2015, at Wentworth-Douglas Hospital in Dover, NH. Grady weighed 9 pounds.

Jami Childress has accepted the position of account executive with Designers' Press, Inc. in Orlando, FL.

Ashley (Hebert) Chittim '13, M.B.A. '14 has accepted a position as an underwriter with Rockland Savings Bank in Rockland, ME.

Sean Machin was promoted to beer salesman at Nappi Distributors in Gorham, ME, covering a territory from Portland to Brunswick.

Sarah Marckoon '13, M.B.A. '13 has accepted a position with Robert Half Finance & Accounting as an accounts payable specialist in Portland, ME. She is also the CFO and Head Volleyball Coach for BOOMing Athletics, based out of Westbrook, ME.



Alums at Capital Area Federal Credit Union

Did you know that the Capital Area Federal Credit Union in Augusta is home to four Thomas alums? From left to right: **Justin Quirion '12**, **Shauna Magee '15**, **Diana Winkley '05, '13** and **John Gregory M.B.A. '97**.

Just like Thomas, CAFCU values community and education. Diana Winkley, President and CEO stated, "Being a Thomas grad myself, once I was in the position to provide opportunities for education for other CAFCU staff, I knew I wanted them to attend Thomas. Having employees attend Thomas has created a community of teamwork, and it has driven growth and change within the Credit Union and the communities we live in and serve. The education and leadership CAFCU employees have received from their time at Thomas has helped them to become great business and community leaders."

Keep up the good work, Terriers!



Alumni Class Notes

Jessica Marin '13, M.B.A. '13 was promoted to senior accountant at PFBF, CPAs in Oakland, ME.

John McIntire has accepted the position of area supervisor with G4S Secure Solutions in Waltham, MA.

Chelsie Morris has recently been hired as a CSR/project coordinator for J.S. McCarthy in Augusta, ME. She is very excited to be the CSR for the Thomas College account and to be providing great customer service to a place which gave so much to her!

Amyr Provost was promoted to lead accounts payable auditor at L.L. Bean in Freeport, ME.

Paul Rechichi was promoted to assistant account executive with Racepoint Global in Boston, MA.

Jasmine Ryan was promoted to field support specialist with Liberty Mutual Group Benefits, Liberty Mutual Insurance in Portsmouth, NH.

Eric Sucy has accepted a position with the Maine State Police as a Maine State Trooper serving Aroostook County.

Brittany (Souther) Tainter was promoted to Prepress Manager at J.S. McCarthy Printers in Augusta, ME.

2014

Mikhail Crockwell has accepted a position as a pool supervisor with Rosewood Tucker's Point in Hamilton Parish, Bermuda.

Olivia (Record) Dyer has accepted a position as a banking specialist I with TD Bank in Auburn, ME.

Dan Feldman has accepted the position of Assets Protection Executive Team Leader with Target in Braintree, MA.

Garen Manzo has accepted a position as an account manager with White House Marketing, Inc. in Los Angeles, CA.

Brandon Martin has accepted a position as a business development representative with Liberty Mutual Insurance in Augusta, ME.

Natasha Nuttall '14, M.B.A. '15 has accepted a position as a staff member in the tax practice department with Baker Newman Noyes in Portland, ME.

Marcus Pratt '14, M.B.A. '15 has accepted a position as a staff accountant with the Maine Department of Health and Human Services in Augusta, ME.

Emily Sexton was promoted to senior accountant with West Central Behavioral Health in Lebanon, NH.

Rebecca Telega has accepted a position as a regional field director with the Maine Republican Party.

Kate Thibodeau '14, M.B.A. '15 served as director of Director of Summer Camps with the Bath Parks and Recreation Department in Bath, ME.

2015

Dan Collins has accepted a position as a pricing analyst with Granite Telecommunications in Quincy, MA.

Brittany Donovan has accepted a position as a member of Crisis Mobile Triage with Crisis and Counseling Center in Augusta, ME.

Alyssa Eugley has accepted a position as a sales support associate with Harvard Pilgrim Health Care in Portland, ME.

Spencer Gray has accepted a position as a computer programmer with the State of Maine Office of Information Technology in Augusta, ME.

Joseph Harrison and Scott Hood '97, M.S. '98 were married on March 8, 2015, in Winter Park, FL.

Margaret May (Cain) Lambert has accepted a position as a claims representative with the Social Security Administration in Augusta, ME.

Dylan McNally has accepted a position as a patrol officer with the Wells Police Department in Wells, ME.

Jason "Chachi" Robinson has accepted a position as a database analyst with Diversified Communications in Portland, ME.

Dalia Williams has accepted a position as a customer service representative with Citizens Energy Corporation in Boston, MA.

Keep in Touch

Do you have
a Thomas story
to share?

We want to hear
from you!

E-mail us at
alumni@thomas.edu with
your story or image!





Employee Happenings



"Thomas has grown in innovative ways. I look forward to being a part of the team continuing this evolution toward future success."

Bernard "Bernie" Ouellette '92, M.B.A. '99
Executive Vice President

Thomas College is excited to announce the hiring of Bernard "Bernie" Ouellette as the new Executive Vice President at Thomas College. In this role, Bernie will oversee the internal, non-academic operations of the College and will help refine and implement strategies to help move Thomas towards its vision for growth.

Bernie earned both a BS in Management Information Systems in 1992 and an MBA in 1999 from Thomas College. "Thomas has grown in innovative ways. I look forward to being a part of the team continuing this evolution toward future success," said Bernie.

He joins Thomas after a long career with Hannaford Supermarkets, where he most recently held the position of Director, Retail Strategy Implementation. Bernie has extensive experience in strategic development and planning, change management leadership, and collaborative leadership.

"Bernie is friendly and engaging with a highly distinguished track record of achievement in the operations of one of Maine's finest companies. I know that he will be a great addition to the Thomas College community," said President Laurie Lachance.

Bernie lives in Auburn with his wife and three children.

Thomas College welcomes the following individuals:

Mike E. Anderson	<i>Head Track and Field Coach</i>	Laurie A. Ochs	<i>Assistant Professor</i>
Crystal L. Bailey	<i>Payroll/Accounts Payable Coordinator</i>	Bernard N. Ouellette	<i>Executive Vice President</i>
Deborah P. Berry	<i>Adjunct Instructor</i>	Jeremy Pare	<i>Assistant Professor</i>
Kelsey L. Bragdon	<i>Assistant Women's Basketball Coach</i>	Joshua J. Poulin	<i>Adjunct Instructor</i>
William S. Dow	<i>Driver</i>	Mary B. Poulin	<i>Adjunct Instructor</i>
Michael Guarino	<i>Assistant Women's Soccer Coach</i>	Herbert E. Rhoda	<i>Driver</i>
Tammy L. Hillman	<i>Custodian</i>	Kristine D. Rice	<i>Custodian</i>
Lynette D. Johnson	<i>Adjunct Instructor</i>	MacKenzie Riley	<i>Admissions Counselor</i>
Jeffrey S. Kahl	<i>Associate Professor</i>	Jeffrey A. Ross	<i>Ice Hockey Coach</i>
Timothy J. Lajoie	<i>Adjunct Instructor</i>	Cote A. Theriault	<i>Academic Coach</i>
Tanya I. Longley	<i>Administrative Assistant</i>	Michael R. Zemrak	<i>Assistant Athletic Trainer</i>
Jennifer A. Nardi	<i>Coach</i>		



In Memoriam

Class of 1938

Althea L. (Doyle) Robinson, 96, died peacefully at Mount Saint Joseph's in Waterville on Monday, Feb. 16, 2015, with family at her side. She was born on Oct. 5, 1918, in Bingham, daughter of Wilmont and Etta (Mahoney) Doyle. She was a graduate of Bingham High School and Thomas College in Waterville. She was employed at Allen-Quimby Veneer from 1952 until its closing in 1974.

Class of 1940

Lila (Barter) Ward, 93, died peacefully at home April 3, 2015. Lila was born in North Conway, NH, on Oct. 4, 1921, to Maitland and Alta (Mason) Barter. After high school, she attended Thomas College and then worked as a secretary in Stratton, Maine. Soon after Pearl Harbor, she joined the Navy WAVES and was trained in Cedar Rapids, IA, for naval office work.

Class of 1941

Veronica "Ronni" Soule passed away on Friday, May 15, 2015, at the age of 91. Born the daughter of John and Mary Cizek Gondela on April 6, 1924, in Winslow, Veronica was a graduate of Winslow High School and later Thomas College. She was employed by Houle's Plumbing and Heating of Waterville for 25 years, serving as office manager.

Class of 1956

Marilyn J. (Bickford) Miller, 78, died peacefully on Thursday, March 26, 2015, at her home with family by her side. She was born in Waterville on Nov. 5, 1936, the daughter of Joseph and Mary (Abraham) Corey. She was educated in local schools, graduating from Waterville High School and Thomas College. She held various positions at Central Maine Power Company and retired in 1991.

Class of 1959

George Hunter, the "Fiddlehead King of the Kennebec," passed away Sunday evening, April 26, at home with family by his side. He was born in Fairfield on March 25, 1933, the son of June (Vincent) and George Hunter, Sr. George was educated in the Fairfield school system and enlisted in the U.S. Navy out of high school. He was a Korean War Veteran and was stationed at the Guantanamo Bay Naval Base in Cuba. Under the G.I Bill, he enrolled and graduated from Thomas College in Waterville. He was also a longtime employee in the accounting office at Keyes Fibre Company.

Class of 1964

Gideon "Sonny" J. Talbot, Jr., 78, of Waterville died Monday, March 9, 2015, at Lakewood. He was born in Waterville, April 17, 1936, the son of Gedeon J. and Evelyn H. (Dionne) Talbot, Sr. Sonny was a graduate of Coburn Classical Institute, St. Michael College, and received a BS degree from Thomas College. He served in the U.S. Army. He had been a teacher for 35 years at Lawrence High School in Fairfield.

Class of 1969

James "Jim" L. Sandler, 69, of Kennebunkport, passed away peacefully on Memorial Day 2015. He was born in Portland on May 20, 1946, to Irving and Loretta Sandler. He was a graduate of Biddeford High School and Thomas College. Jim was the proud co-owner of Sandler Bros., one of the oldest family owned companies in the region, before he sold it in 2006.

Class of 1971

Elizabeth Ann (Pelletier) Winslow, age 63, died Friday, June 5, 2015, at the Alford Center for Health, Augusta, following a short illness. She was born in Augusta, ME, on June 17, 1951, a

daughter of the late Dominic and Teresa (Murphy) Pelletier. Mrs. Winslow was a graduate of Cony High School and Thomas College in Waterville. She had been employed by Central Maine Power for over 36 years.

Class of 1975

Charles Edward Champine, 92, passed away on March 30, 2015, at Lakewood Long Term Care in Waterville. He was born on April 28, 1922, to Wallace Champine and Gertrude Cote Champine. Charles graduated from Waterville High School in 1940, then enlisted in the United States Coast Guard on active duty during World War II. Charles earned his Bachelor of Science degree in Business, graduating magna cum laude, from Thomas College.

Class of 1981

Rachel Mary (Charette) Begin, 56, passed away on July 8, 2015, at Mount Saint Joseph in Waterville, surrounded by family. She was born on May 26, 1959, in Hartford, CT, the daughter of Henry James and Adrienne (Gauvin) Charette. On June 14, 1980, she was married to Russell Begin at the Basilica of Saints Peter and Paul in Lewiston. In May, 1981, Rachel received a Bachelor of Science degree in Management from Thomas College in Waterville.

Former Faculty/Staff

Jeffrey A. Coombs, 41, passed away unexpectedly Friday, May 29, 2015. He was born April 22, 1974, in Augusta, the son of Gary and Susan Coombs. Jeff graduated from KVCC with an Associate Degree in Accounting and was attending Thomas College, working towards his Bachelor's. He also graduated from the Police Academy in Vassalboro and was a police officer in the town of Oakland.



**AL-112
STUDENT
SUCCESS
CENTER**



Annual Report FY '15

The success of our students is in their hands, thanks to your generosity and support of our mission. When you contribute, you give through Thomas rather than to Thomas. You help prepare students to succeed personally and professionally, and for leadership and service in their communities.

Thank you for your continued support!

PRESIDENTIAL MEDALLION CIRCLE

\$100,000 AND ABOVE

Harold Alfond Foundation
Henry H '15 and Ellen Hinman H '15
The Sheridan Corporation
Todd '92, M.B.A. '99 and Kelly (Wood) Smith M.S. '12
Unity Foundation

COLLEGE MACE SOCIETY

\$50,000 - \$99,999

Davis Educational Foundation
H. Allen H '08 and Dianne Ryan
Sodexo, Inc. & Affiliates

TRUSTEE EMERITI CIRCLE

\$25,000 - \$49,999

Conrad '77, H '98 and Lois (Brown) Ayotte '76
The Lunder Foundation
Kevin '80, Judy, Kelly, Kody, and Kolton Vining

TRUSTEES ' CIRCLE

\$10,000 - \$24,999

Bill and Joan Alfond
Barbara Atkins
Bangor Savings Bank Foundation
Brian '88 and Amy Bernatchez
BerryDunn
Finance Authority of Maine
Golden Pond Wealth Management, Brian '88
and Amy Bernatchez, and Albert, III M.B.A. '94
and Sara (Delgado) Languet '95
Kennebec Savings Bank
Laurie (Gagnon) M.B.A. '92 and David Lachance
John W. H '07 and Jeanne M. Rowe
George Spann
Richard M.S. '80 and Janis Spellman
Sukeforth Charitable Foundation
Summit Natural Gas of Maine

PRESIDENT 'S CIRCLE

\$5,000 - \$9,999

Francis Bartlett Jr. Revocable Trust
Best Western Plus Waterville*
Central Maine Motors Auto Group
Charlie 's Family of Dealerships
Cross Insurance
G&E Roofing Co., Inc.
Giri Hotel Management LLC
The Agnes M. Lindsay Trust
Macpage LLC
J.S. McCarthy Printers
Bill and Stacey Ryan
Jim '89 and Kelley (Benoit) Shimansky '88, '89
Verizon Foundation

LEADERSHIP SOCIETY

\$2,500 - \$4,999

Bangor Savings Bank
Coldwell Banker Plourde Real Estate
Construction Consulting of Maine, LLC
Larry '70, '74, M.S. '78 and Donna Davis
Gary '78 and Lois Goldman
Inland Hospital
James and Jennifer Libby
MacKenzie Landscaping Inc.
Philomena McPhee-Brown '69, M.S. '01 and
Dale Brown
Bob '79 and Susan Moore M.S. '14
North Atlantic Conference
PFG NorthCenter
Gregory and Dorothy Piper
Donald and Irene Plourde
David Roussel '93

In honor of Coach Jim Evans

Sebasticook Valley FCU
Susan (Pooler) '77, P '09 and Howard Sevey
Richard and Nancy Stowell

In honor of Jean Croce

Roberta (Cross) '69, '71 and David Tibbetts '72
Union Office Interiors
Ken and Margaret Viens
W.H. Demmons, Inc.
Zimba Company Inc.

OAK TREE SOCIETY

\$1,000 - \$2,499

Anonymous (2)
AAA - Northern New England*
Clifford Abbott, Jr.
The Peter Alfond Foundation
In honor of Bill and Joan Alfond
Erin and Jason Baltes
Belgrade Lakes Golf Club*
Susan Bell
Ralph Brown P '87, P '88
In memory of Stephen H. Brown
Paul, Jr. '77 and JoEllen (Cuthbert) Cottrell '76
Henry and Eleanor Crowell
Dick Curry and Ellen Honan
Lisa M. Desautels
Sherry and Joe Donato
James '93 and Elizabeth Eastlack
Thomas and Barbara Edwards
Beth Gibbs M.B.A. '93, P '12
Todd Greenquist and Jonathan Carr '91, M.B.A. '91
Katherine Haley and Guy Haas
Charles, Jr. M.B.A. '02 and Maria Hays
Higgins & Bolduc Agency, Inc.
Tim and Alana Holt
Honeywell International Inc.
Jeff '87 and Marcia Hubert P '13, P '14
Mark and Judy Johnston
Jonathan and Sara Kent

Jim Lemieux '91, '94, M.B.A. '97

Maine Higher Education Assistance Foundation
MaineGeneral Health
Nancy (Lemar) '64 and Thomas Marston
On Target Utility Services
Janet (Mackay) '71 and Richard Parkhurst
Johnson W. Parks Family Trust
David Pease and Edward Tobolski
Michele Pelletier M.S. '99
Roderick '75 and Deborah Pelletier
Christopher '88, M.B.A. '89, Andrea M.S. '07,
Emma, and Andrew Rhoda
Dorcas Riley
Alice Savage, M.D., Ph.D.
Paul Schupf H '05
Lesley (Dolloff) '79 and Bill Sprague
Douglas '73 and
Patricia (Mathieson) Tatham '71, M.S. '99
TSSD Services, Inc.
Paul G. White Interior Solutions

1894 SOCIETY

\$500-\$999

Anonymous
Anonymous
In memory of Richard & Pauline Rudy
Bruce '77 and Karen Bachelder
The Bank of America Charitable Foundation, Inc.
Lisa (Van Vranken) Bargsley '76
Sno (Pierpont) Barry
Joanne (Clifford) M.B.A. '90 and Paul Bean
Wendy (Iwans) '80, '88 and Thomas Bean
Debra Biche-Labbe
Elizabeth (Pilsbury) '05 and Drew Bridger
Stephen '92 and Tammy (Pelletier) Brunetti '96
Jamie and Kim Campbell P '18
Edwin and Jutta Carboni
Central Tire Company*
Ramon and Jane Cheleuitte P '16
Choice Investments
Robert '82 and Juelle Clark
Susan (Conant) Cook M.B.A. '02
Douglas H '09 and Marie (Wing) Cutchin '62
Michael '83 and Linda (Kura) D 'Avolio '80, '82
Delta Ambulance Corporation*
John and Carol Dexter
William '72 and Paula Dubay
Steven Dyer
Douglas '83 and Colleen (Payne) Eugley '83, P '15
Kelly Frost
Maryanne Gawlinski '80 and Joseph McCarthy
GDS Associates
Marc '77 and Paula (Coolong) Gendron '78
Goggin 's IGA Supermarket
Scott and Nicole (LaLiberte) Hamlin
Dean '89, M.B.A. '89 and Doreen Hartley
George '94 and Julie (Parlin) Keim '95
Brian '93 and Sarah King

Gregory '93 and Lola (Guerrette) Korn '95 🌾
Lawrence '70 and Linda LeClair
Nancy (Briggs) M.B.A. '94 and Jay Marshall 🌾
New Balance Athletic Shoe, Inc.*
NLC Ink Screen Printing & Embroidery LLC
John and Cynthia Orcutt*
Terry and Linda Parlin
PepsiCo Foodservice*
Jeffrey '78 and Margaret Peters
Raymond James
Sheila Rhoades
Barry Rock '92, '94
J F Scott Construction Company
David Sewall

In memory of Joseph Sewall
Richard '81 and Jean Slingsby 🌾
TJ and Kerry Smart 🌾
State Street Foundation
Michael Tardiff
Oscar Udoji '76
Veilleux Funeral Home
Dog Wallace and Ellen McQuiston P '07
Waterville Country Club*
Rick Whalen '93
Whitt 's Garment Works*
Douglas '88 and Jennifer (Harmon) Wilson '88 🌾

TERRIER CLUB

\$250-\$499

Anonymous
Anderson-Krause
John '82 and Dana Andrews
Jacqueline Arsenault
Matthew Babson '86 and Donna Shepard
Julianne (Fabian) '92 and Michael Benecke
Big Entertainment Live*
Brookewood Realty
Bonnie (Dyer) '13 and Todd Buckmore
In memory of William Dyer

The Bokers
Robert '88, M.B.A. '96 and
Carolyn (Drouin) Callahan '89
Thomas Capato
Periann (Smith) '83 and Jason Carl 🌾
Matthew and Joan Cloutier
John and Cheryl Daggett 🌾
James Delorie M.B.A. '14
Robert, Jr. '00 and Sarah (Currier) Dube '01
Scott Dumas '13 and

Courtney Rustemeyer '13, M.B.A. '13
Cathy M.B.A. '10 and Eric Dumont
Christa (Haskell) '92 and Mark Fairbanks
James Fitton '67 🌾
Michael Flanagan

In memory of Mark G. Flanagan
Belinda Flores
Fortin 's Home Furnishings*
Stefanie (Rioux) '05, M.B.A. '05 and
Jeremy Foster
Ralph Gamache '77 and Holly Margeson-Gray P '15
In honor of Spencer C. Gray '15
Joseph '79 and Denise Gasbarrone
Ralph '56 and Connie Gilman
Global Impact
Michael '92, M.B.A. '92 and
Kellie (James) Guarino '92, M.B.A. '98
Hardware Consultants
David Hawkes '69
William Hefler
Emily Hidalgo
(Ann) Nancy Hill '78

In memory of John Thomas
Hoods Hometown Store LLC dba Sears
J.T. 's Finest Kind Saw, Inc.
Nicholas and Cynthia Jewczyn
Johnny 's Selected Seeds

Michelle Joler-Labbe and Nick Labbe M.B.A. '12
Joseph 's Market
Kappa Delta Phi Alumni Association
Kennebec Supply Company
Rita LaChance P '09
Harry LaFond
Jason LaVerdiere
Literacy Volunteers Waterville Area
Littlefield 's Gym, Inc.*
Douglas '88 and Eileen (McGrath) Long '89
David '78 and Mary Lucius
Nelson and Paula Madore M.B.A. '93, P '04
Matthew '00 and Danielle (Bolduc) Marquis '00
Dan McKenney P '18*

Betty-Jane Meader
Robert '04, M.B.A. '06 and Anne Morin
Keith Morneault '96, M.B.A. '96
Paul Mufson and Kathleen Ryan-Mufson

In memory of Veronica Ryan
James Murton M.B.A. '90 🌾
Zlatko Neceveski M.B.A. '10
Michael '92 and Carol Payne 🌾
Ann (Cyr) '63 and Daniel Pinkham
James Raddatz
Nikolas Ray '02, M.B.A. '07
Eric '04 and Maren (Madore) Reddy '04
Susan Roche
Sappi
Saunders Manufacturing Company
Joe Scozzafava and Dina Jeannotte
David '78 and Diana Sedler
Eric and Jennifer Seekins
Barbara (Talbot) '80 and Douglas Sinclair
Skowhegan Savings Bank
Gregory and Janine Smestad
Landon Sock
Warren '76, '78 and Susan Spencer
Mike Sypher P '18
Karen (Hebert) '83, M.B.A. '87 and
Scott Van Orman
Richard and Mary Kay Whitmore
In honor of Betty-Jane Meader
Wight 's Sporting Goods*
Mikaela M.S. '15 and Anthony Ziobro 🌾

RED & BLACK CLUB

\$100-\$249

Anonymous (12)
Anonymous 🌾
After Hours Heating Service*
Joanne Allen '02, M.B.A. '02
Alley & Morrisette Reporting Service
Michael Alt
American Awards, Inc.*
Paul M.B.A. '90 and Anna Anderson
Applebee 's
Karen (McLean) '79 and Robert Archer
Leo Arsenault '54

In memory of Mary O. Arsenault
Augusta Country Club*
Cheryl Barnes
Bryan '80 and Terri Barstow
Lawrence and Kerri Bates
James and Michelle Beach
David and Carol Beal
Eugene H '82 and Mary Beaupre
Charles Bedard
Emily and Jordan Bell
Pauline Bergeron-Flood '75 and John Flood
Paul Berry
Besser Pools, Ltd.
Jane (Wilson) '78 and Daniel Bickford P '15
Dean M.B.A. '93 and Ruth Bither
John M.B.A. '04 and Jean Bloemendaal
Matthew '80 and Nancy (Gilbert) Bodine '79, M.S. '83
Nancy (Hughes) M.S. '13 and William Bolton

Irfan Bora
Roland Bouchard
Bragdon Farm, LLC*
Braintree Superior Officers Association
Jack Brassell '89
Francis Burnham
Michelle (Jandreau) '76, '78 and Douglas Cahill
John Callahan '72
Mike Cammack
Campbell Asset Management
Carol Carew M.B.A. '01
Elva Castaneda
CedarWorks*
Nancy Charette
In memory of Donald J. Charette
In memory of Joyce Dyer
Elayne Charron P '89, P '91
D.F. Chase, Inc.
Jose and Julia Chavez
Clayton '81 and Margaret Churchill
Polly Cobb
TJ '11, M.B.A. '11 and Casey (Trask) Collins '11 🌾
Carolyn (Carpenter) '76 and
C. Christopher Colpitts
Shannon and Curtis Combar
Kevin and Kelly Conley P '16
Ryan Conley '02
Donald and Carleen Cote
Shawn Cote '06
Joseph Cough P '18
Kelly (Mathisen) '81 and Anthony Couture
Couture Styles*
Leo Credit
Bethany Cyr '93 🌾
Derek Daigneault '94
Alice (Reeves) '79 and Brinton Darlington
Jacob Darveau '14, M.B.A. '15
Scott and Helen Davis
Dianne (Fecteau) '89 and Steven Day P '15, P '16
Marie Deeb '62
April Dehetre
Kathleen (Whitson) Delcourt M.S. '05, M.S. '08
Frederick, II '87 and Cindy Denico
Carolyn Dennett P '18 and Hartley Palleschi
Michael '74 and Susan Deschaine P '01
John '80 and Lisa Donilon
Amanda Drummond '12 🌾
Derek '06, M.B.A. '06 and
Darcy (Thomas) Dumont '05, M.B.A. '14
Nancy Duzor
Erik Endresen '75
Betteanne Esposito P '17
Neil and M. Patricia Esposito
Millard and Anne Eugley P '83
Herbert Everett
Benjamin '04 and Amy Fairclough
Celeste Fecteau
Lorraine Fellows '87
Sean '97, M.B.A. '97 and
Holly (Mullen) Ferguson '95, M.B.A. '96
Carolyn (McFarland) '78 and Anthony Filairo
Michael Fitton '77
The Fitzgibbon Family Trust
William M.B.A. '94 and Lucy Flaherty
Patrick Flannery
Anthony Flye
D. L. Fotter & Sons, Inc.
Amber (Hall) '77 and Jeffery Fournier
William '94 and Michelle Fournier
Nancy (Alexander) '00, M.B.A. '02 and Nicholas Fox
Richard Freedman and Trisha Murphy
Ramona (Foster) M.B.A. '03 and Arnold Freeman
Susan '71 and Richard Gage Knedler
Robert Gagnon '07, M.B.A. '10 and
Kari Grant-Gagnon '07, M.B.A. '09
Michelle Galvan
Kurt Gilbert '73

Peter Gilbert M.S. '78, P '99
 Timothy and Violet (Clark) Giroux
In memory of Bill Lawler
On behalf of the employees of Waterville Home Oxygen
 Wayne '76 and Katrina (Young) Gove '77
 George and Betty Grant
 Herbert and Jacqueline Gray
 Charlie '78 and Nancy Greer
 Ground Up, Inc.
 Edgar '89 and Angela Guzman
 Michael '86, M.B.A. '97 and
 Lisa (Thibault) Hachey '86
 Romance Hackett '74
 Robert Haines
 Kenneth and Amber Haley
 Christine Hallowell
 LaRue Hamilton '82
 Violet Hamlin
 Robin Handrahan
 Arnold '83, '86 and Rebecca Hanscom
 Judith Hansen-Childers M.B.A. '96, M.S. '98,
 P '01 and Dennis Childers P '16
 Robert M.B.A. '85 and Elaine Harriman
 Charles, II '85 and Denice (Guenette) Harris '85
 Philippe '59 and Patricia Hebert
 Geoff and Diane Hensley
 Shauney O 'L. Higgins and Ann Glendening
 Jennifer (Charron) '91 and Corey Hight
 Walter and Sandra Hight
 David Holden
 Douglas Holmes
 Richard '67 and Diane Holt
 Derek and M. Lisa Howard
 Roland '57 and Gertrude Huard
 Laura (Simpson) '97, '00, M.B.A. '02 and
 Tom Hudson
 Shonna and Travis Humphrey
 Eric Hunt and Cheryl Martin-Hunt
 Elmer and Hettie Hutton
 Susan (Crosby) Jacques '47
 Gary and Brenda Johnson
 Lee and Michelle Johnson P '18
 Mike Johnson '94
In honor of Marie Gaudet 🌻
 Frederick and Sharon Joncas
 Jordan Lumber Company, Inc.*
 Richard and Vanessa Jordan
 Shawn Jordan
 Jordan's Snack Bar, Inc.
 Craig '81 and Laura Joseph
 Joseph 's Fireside Steakhouse*
 Janet L. Kane Revocable Trust
 Kenneth and Rebecca Kane P '19
In honor of breast cancer survivors
 Thomas and Roberta Kane
 Peter and Winifred Kelly
 Jane (Etchie) '78 and Larry Kennedy
 John Kennedy
 Paula (Wentworth) Kimball-Vigue '02, '07, M.S. '15
 Christopher and Audrey Knight P '18
 Richard Knight
 Ronald '68 and Helen Knox
 Kyes Insurance Agency
 Jon Lamm
 David '89 and Penny Laplante
 Charles and Johanna Laren
 James and Cecile Laren P '17*
 Thomas and Betty-Jo Largay P '98, P '00
 Joshua '04 and Alesia (Dalton) LaRoche '05
 Michael Laverdiere '81
 William and Carol Laverty
 Steven and Michelle Lavigne
 Lori Lawler
 Chris LeBlanc
 Howard and Alicia Lee
 John and Dianne Lemoine
 Cindy and Doug Lepley

Bobby Light
 Kim (Nadeau) Lindlof '91
 Kelly (Bell) '80 and Greg Lloyd
 Long Island Athletics Baseball LLC
 Cecelia Loscocco
In memory of Christina Wilkins
 Sandra Lovley '83 and Jean Galipeau
 Tim and Carol Lyons
 Kent '81 and Susan Macleod
 Paul '74 and Theresa Magro
 Roland '71 and Anna Marie Maheux
 Main Security Surveillance, Inc.
 Maine Educators Consortium
 James '84 and Connie Marotta
 Nathan '10, M.B.A. '13 and Amanda Marquis
 Marriott Sable Oaks*
 Eugene and Roxanna Martin
 Darren and Vanessa Matthews
 McAllister Real Estate
 Jennifer (King) McBrierty
In memory of Bernard A. King
 Valerie '91 and Paul McCarty
 Jonathan McDonald '05, M.B.A. '05
 Thomas '77 and Paula (Ramos) McGeary '77
 Chris McKenna
 Crichton '04, M.S. '09 and
 Amy (Khuu) McKenna M.S. '07
 McKenney & Sons*
 Sherwood McKenney
 Norma McLean
 Peter '69 and Jo Ann (Granata) McLellan '69
 Gregory M.B.A. '01 and
 Stephanie (Talbot) McNeal '00
 David '66 and Mary (Smith) Mead '64
 Margaret Mendoza
 Maryam and Akiba Mermey
 Marsha Merryman '97
 Marie Metayer
 Sandra Miller
 Carol (Ogden) Moore '76
 Ian '02 and Elizabeth Moriarty
 Carolyn J. Morin, DDS, PA
 Steve Moro
 Charles Morton
 Scott '04 and Meaghan Mullen
 Erik M.B.A. '07 and Sara Nadeau M.S. '07
 Brian and Jaime Noles
 Tommy and Edna Noles
 Norris, Inc.
 Roberta (Julien) '89 and Tom O 'Brion
 John and Mary O 'Donnell
 Old Colony Builders, Inc.
 Germaine Orloff M.B.A. '88
 Jared '01 and Mary (Mersereau) O 'Roak '01
 Ouellette and Associates
 William Oxford '10, M.B.A. '10
 James and Leslie (Bouchard) Parsons '02, M.B.A. '14
 Bradley '01, M.B.A. '07 and
 Amanda (Knowlton) Pelletier '02, M.B.A. '06
 Corey '04, M.B.A. '12 and Jennifer (DeRoche)
 Pelletier '04, M.B.A. '14
 Christine (Campbell) '90 and Keith Perkins
 Randy and Susan Perry
 David Pickering
 Peter and Jeanne Plowman
 Scott Plowman '91, P '17
 G.M. Pollack & Sons*
 Vincent and Melissa Pope
 Robert Potter '86
 Roland and Anna Quinlan
 Pierre Quirion and Mary McCarty
 Linton and Christina Quirion
 David Rancourt '84
 Darlene Ratte '86, M.B.A. '88
 Charles Rawson '02 🌻
 Marcia Rechholtz P '18
 Stephen '72 and Beverly Reid

Thomas '83, M.B.A. '85 and
 Karen (LaPlante) Restivo '83
 Guy Reynolds '91 and
 Rosemary Marino-Reynolds
 Riverside Kwik Stop
 Terry and Tonjia Roan
 Rocky 's Stove Shoppe
 The Romandetti Family Revocable Living Trust
 David '76, M.B.A. '82 and
 Suzanne (Morin) Ronan '69, P '08
 Arthur and Donna Ryder
 Melvin and Clara Ryder
 Michael '92 and Juley Salisbury
 Nancy Sandreuter P '91
 Adam and Bonnie Savage
 Joyce (Violette) Sawtelle
 Russell, II '80 and Rebecca Schmelzer 🌻
 John Scott M.B.A. '07
 Joel '04 and Shelly (Poulliot) Selwood '89
 Charles and Deana Shirley
 Jillian Sloban '12, M.B.A. '12
 Donald and Alise Smestad
 James Smith
 Joanne (Cough) '77 and Mark Smith
 Albert Souza
 Michael Stang M.B.A. '00
 James Steward
 Dorothy (Ward) Sullivan
 Albert, III '84 and Linda Swallow
 Sweet Dreams*
 Peter Theriault M.B.A. '07
 Bernie Thibodeau 's Plumbing & Heating, Inc.
 Steven Tilley '79, M.B.A. '15 and
 Pat Boone-Tilley
 James Tims
 Mark Titus
 Larry and Judy Toothaker
 Robert Touchette '02
 Linda Towle '80, M.B.A. '87
 Sean '96, M.B.A. '96 and Tonya Trahan
 Jill Trundy '97, M.B.A. '97 🌻
 Vacationland Skydiving, LLC*
 Paula-Jo (Warren) '87 and Jeffrey Varney
 Michael '72 and Susan Vashon
 Jimmy '10 and Jen (Higgins) Veino '09, M.B.A. '12 🌻
 Maryann Walker
 Michael Webber
 Jason Webster and Sarah Peterson
 Shawn and Diane Welch
 Tammy (Martin) Weston '94 🌻
 Marjorie (Hassett) White '51
 Darrell and Janet Wilkie
 Tiffany Willman '12
 Jeffrey '79 and Kathie (Krikorian) Winchenbach '79
 Scott Winchester
 Wayne '80 and Susan Winston
In honor of Dr. Nelson Madore
 Robert '79 and Patricia Wright
 David and Sandra Wyman
 Richard Wyman, Sr.
 John and Brenda Yeaton
 Michael Zemrak

FRIENDS OF THOMAS COLLEGE

\$1-\$99

Anonymous (18)
 18 Below*
 Javier Abascal Carrasco M.B.A. '14*
 Ace Tire & Auto Service*
 Jerry and Dianne Acquarulo
 Brian and Toni Adams
 Robert Adams '92
 Marie Agger
 Michael '84 and Diane Albano
 Mona Albee '95
 Erica (Martin) '95 and Mark Albert

Ray Albert
 Marisa (Ellsworth) '04 and Joel Alcaraz
 Lucas Allen '05
 Anthony '93 and Ami Amero
 Bradley and Lori Ames
 Bob Anair 's Auto Sales & Service, Inc.
 Mark and Diane Anderson 🍂
 Lori Anna
 Joseph and Carol Archambault
 Doris (York) Armstrong '49
In memory of Donald Armstrong
 Shirley (McCarron) Ashmore '67
 Frank and Nancy Astuto
 Aubuchon Hardware*
 Barber Investments, LLC
 Patricia (Camp) Barber
 Nicholas Barish '15 and Amanda Brooks '13
 Leonard and Grace Bates
 Christopher M.B.A. '99 and Yvonne Batson
 Gerald Beaman
 Barry Bean '02, '08
In memory of Kasi Gajtkowski
 Scott and Christine Bean
 Bear 's One Stop
 Jeffrey and Ragan Beauregard
 Maurice Bedard
 Deborah Begin-Wyman '94, '96, M.B.A. '98 and
 Roland Wyman
 Veronica '92 and Mark Beriau
 Amylynn (Smith) '00 and Randall Bibeau
 Gerald '51 and Hilda (Baldic) Bickford '51
 Joan (Dow) Bickford '86
 Christopher '93 and Laurie (Shores) Bilodeau '92
 Blake Family Hardware*
 Michael and Julia Boies P '18
 John and Darlene Boissonnault
 James '08, M.B.A. '08 and
 Martine Boissonneault
 Robert '68 and Linda (Weymouth) Bolduc '70
 Randolph and Shirley Bole
 Lenore (O 'Connell) M.S. '99 and James Boles
 Bolley 's Famous Franks*
 David Boomhour '04
 Joanne Borrus
 John and Donna Bouchard
 Sandra (Mooers) '79 and Mark Bouchard
 Rebecca (Hanson) Boulanger '80
 Laurie (Pottle) M.B.A. '06 and Eric Bourgoin
 David Bowden
 Brenda (Pomerleau) '75 and Daniel Breton
 Dale and Crystal Breton
 John Brier M.B.A. '95
 William M.B.A. '85 and Gail Brooke
 Kenneth Brooks
 Timothy Brosnahan '14
 Larry and Sarah Brown P '18
 Kathy (Clifford) '73 and Lloyd Buck
 Bud 's Shop 'N Save
 Thomas '84 and Jill Bullock
 Wayne and Helen Burnett
 Michael '82 and Tina Burnham
 Sonia (Michaud) '70, '83 and David Butler
 Katherine Cahall '88, '91, M.B.A. '95 and
 Wayne Cook
 Donald and Therese Caisse
 Donna Caisse
 Charles Calkins M.B.A. '08
 Diane Camacho
 Paul and Caroline Camick
 Campbell 's True Value*
 Thomas and Cynthia Capobianco
 Rosemary Caporale '95
 Cappza 's Pizza*
 Thomas Carey '79
 Walter M.B.A. '07, P '07 and
 Kristi (Dellaway) Carlow '09
 Lillian Carrier

Juanita Carter
 Central Maine Textbooks*
 Richard Chalmers
 Nancy (Willette) M.B.A. '93 and Phillip Chamberlain
 Elaine Chasse
 Daniel and Janice Chisholm
 Patricia Clark
 Timothy '88, M.B.A. '95 and Patricia Clark
 Susan (Quirriion) Clary M.B.A. '97
 Terry Ann (Bernard) '77 and Gregory Clukey
 Joan Coleman M.B.A. '90
 Rebecca Collison
 Marjorie (Waynen) '74 and Roger Concannon
 Stephanie Conlan
 Brenda (Bragdon) M.B.A. '03 and
 Richard Lee Corthell
 James Cosgrove '95
 Patrick Costin
 James, Jr. M.B.A. '92 and Meredith Cough
 Eric Covey and Helen Toomey-Covey P '16
 Laird and Marcy Covey
 Mark Covey
 Wilton and Marjorie Covey
 Cynthia Cowee
 Christina Cracolici '99
 Donald Cragen M.B.A. '13
 Miguel and Virginia Cuevas
 D & L Country Store*
 Jane Daly
 Damon 's Pizza & Italians*
 Andre and Tyla Dandeneau
 Bruce M.B.A. '98 and Kathleen Daniels
 Bruce '74 and Pamela (Leighton) Dantzler '75
 Joyce Davis '59
 Jarod '12, M.B.A. '14 and Tanya (Berry) Deanis '12
 John and Cathy DeMerchant
 James and Rosemary Dempsey
 Dean Denis Photography
 Ronald and Londa Dennett
 Gerard '70, M.B.A. '86 and Patricia Dennison
 Tina (Main) '89 and Rusty Dewsnap
 Patrick Dooley
 Dwaine M.B.A. '02 and Brenda (Glidden)
 Drummond M.B.A. '02
 Nicholas and Jessica DuBois
 Dunkin Donuts, Inc.*
 Tina (Bickford) '89 and Alan Easler
 Eugene and Linda Eaton
 Stephen and Susan Ebling
 Allen B. Edwards
 EJS Construction, LLC
 Nancy (Ayoob) '89 and Richard Elias
 Cecile (Corbin) Ellis '41, P '64
 Judith Ellis '64
 David Erb, Jr. M.B.A. '02
 Eric 's Restaurant*
 Rose Esposito
 Armando Estrada
 Steven and Robin Esty P '14, P '15
 Daniel and Joan Fabrizio
 Kenneth and Lani Farr
 Amanda (Welch) Favreau
 Roger and Kathleen Fecteau
 Norman and Anne Feeley
 Samuel Fisher '13
 Flagship Properties, Inc.*
 Edward and Karen Flaherty
 Shirley (Brooks) Flaherty-Browne '99, M.B.A. '08
 and Richard Browne
 David '00 and Judy Fletcher
 Cheryl (Wakeham) '95, M.B.A. '09 and
 Russell Flewelling
 Richard Forsley '03, M.B.A. '06
 Fortified Fitness*
 Michael and Jill Fortin
 Gary Foss
 Eleanor (Bailey) Foster '40, P '97, P '99

Herbert and Nancy Foster
In memory of Ken Green
 John and Judith Fowler
 James and Elizabeth French
 Frito Lay*
 Rachel (Pomerleau) '95 and Chad Frost
 Robert Frost '96
 Fred Funk
 Vernice Funk
 Fyre Flye Creations*
 Patti Gagne Agency, Inc.
 Katherine (St. George) '09 and Jeff Gagner
 Virginia (Waldron) '45 and Perley Gallant
 Linda (Foster) '04 and Henry Gascoyne
 Laura Gelinas
 Peter '94 and Diane (Plante) Gerow '95
 Cheryl Gibson
 Gifford 's Famous Ice Cream*
 Cynthia (Kniffin) '84 and Robert Gilcott P '13
 Norma (Leighton) Giroux '52
 Tanya Gonzales
 Catalino and Hilton Gonzalez
 Gracie Gonzalez
 Susan (Vajs) '86 and John Gordon
 Pauline (Harding) Gorham '74
 Anne (Mitchell) Gould
 Benjamin '10 and Kristin (Tormollan)
 Grant M.B.A. '13
 Tyler Graves '99
 Ryan '02 and Katherine (Hamann)
 Greenlaw '02, M.B.A. '10
 David M.B.A. '86 and Roxanne Grenier
 Seven (Lathrop) Grenier M.B.A. '08
 Richard '71 and Myrtle (Kelly) Grindall '72
 Erica Guay '99
 Andrew and Sue Guskea
 Thomas Gussler
 Richard M.B.A. '92 and Ann Guttmacher
 Rodrigo '89 and Angela Guzman
 Jennifer Haas
 Michael Hachey
 John '84 and Heidi (Varnam) Hall '83
 Carl M.S. '78 and Janet Hamilton
 Mary (Dill) '72 and Ronald Handfield
 Lucy (Webb) '77 and David Hardy
 Jo-Anne (Doane) '94 and Jerome Harrell
 Donn Harriman P '18
 Ethan Harriman
 Timothy Hassett-Salley
 Lucille (Fortin) '63, '65 and Jerry Hawkes
 Teresea Hayes M.B.A. '14
In honor of Charlee Hayes '07
 Sarah (Anderson) M.B.A. '00 and
 Charles Hedrick
 Sonya (Martin) '97, '99, M.B.A. '00 and
 Adam Henderson
 George Henry '51
 Carole (Coons) '00 and Nelson Hickey
 Donald '86 and Marjorie Higgins
 Melissa (Thomson) '95 and Adam Higgins
 Hight Chevrolet Buick Pontiac GMC, Inc.
 Kurt Hildenbrandt and Mary Dolan Hildenbrandt
 Rachel Hinojosa
 Kerry Hoey
 Christopher '78 and Christine Holmes
 Ronald M.B.A. '92 and Sharon (Hall) Holmes M.B.A. '96
 Jeff and Carol Hoopingartner P '16
 Chester Horne, II '88 and Julianna Newman Horne
 Richard and Rita Howard
 Shawn and Lisa Howland
 Jordan Hoyt '14
 Lisa (Shores) '92 and Patrick Jacques
 Jay Diesel Gas
 Jem 's Country Gifts*
 Donald and Isabel Jensen
 John '79 and Lois Jensen
 The Jewel of India*

Four Friends, Inc. dba The Jock Shop
Edward Johnson '92
Christopher '77 and Pam Jones
Debra Jordan
Everett and Gloria Jordan
Julie Jordan
Henry and Mary Joyce
Janet Kane
Joshua Kane '09
Cyndy Kane Olson '77 and Christopher Olson
Nancy '78 and Alfred Karter
Patrick and Susan Keating
James Kelley
Norbert '48 and Nancy Kelley
Kathleen Kelly M.S. '80
Troy '93 and Kim Kendrick
Wendy (Aicher) and Jeffrey Kennedy
Ben '08, M.B.A. '15 and Justine (Ramsdell)
Kenney '09, M.B.A. '15
Carol Kenney
Peter Kenney
Karen King '77
Theodore and Hattie King
Gwen Knight
Nancy Knight
The Korner Store and Deli*
David and Debra Kramlich
In memory of Darryl Quinlan
James and Beryla Kramlich
Thomas and Sarah Kramlich
Alexandra Kriegel '11, M.B.A. '12*
Charles and Pamela Kriegel P '11, P '12*
Kenneth and Joan Kronstrand
Kruger Family
Diane Kuyoth
Lois (Mosher) '46 and Richard Labelle
Louise Labrie
Jennifer (Shelley) '05 and Derek LaCroix
Cynthia (Magoon) '65 and Alvar Laiho
Dianne Lajoie
Karen Lajoie
Sharon (Redlevske) '73, M.S. '99 and
Dennis Lambert
Valmond '68 and Elizabeth Landry
Darrin and Shelley Lane
Richard and Kana Langlois
Harry, III M.B.A. '96 and
Jennifer (Sterns) Lanphear
Sandra (Strout) '86 and Joseph LaRose
Larsen 's Jewelry*
Jill (Babcock) '90 and Michael Lavoie
Roger and Kathleen Lavoie
Cathi Lee '83 🌻
Cindy (McDaniel) '93 and Glen Lee
Ronald and Charlene Leighton
Marilyn Leimbach '99
Russell Leite
Thomas and Linda LeMont
Joseph and Patricia LePauloue
Annette (Choquette) '00 and Joseph Lepkowski
In memory of Diane Bilodeau
Donald and Deana LeSuer
Gary Levesque
Lucas '02 and Amy (Young) Levesque '04
Jacquelyn Lewis M.B.A. '97
Valerie Leyba
Patricia (DeRoch) '77 and Steven Libby
Kathryn (Eater) '00 and Alan Linkletter
Doris (Therriault) '71 and J. Harold Little
Daniel Littlefield M.B.A. '95
Yunqi Liu M.B.A. '11
Vicki (Bell) M.B.A. '03 and Donald Lizotte
Jefferson Longfellow M.B.A. '03
Joseph and Tiffany Lopes
Debra (Sprague) '76 and Charles Lovelady 🌻
Brenda (Lapointe) '82, '03, M.B.A. '08 and
Barry Lyons, Jr.

Madlyn 's New & Used Consignment Shop*
Karen Madsen M.B.A. '95
Rudolf and Amanda Magdolen
James Mahoney
Mainely Brews*
John Majewski
Manchester Dentistry
Margo & Co Hair Salon & Day Spa*
Gregory '84 and Donna Marken
John '70 and Nancy Marotta
Burnham Martin and Lisa Schmitt Martin
Joseph Massey M.B.A. '11
Scott and Brigitte Massey
Dolores (Witham) '66 and James McBain
Scott and Barbara McCrum
Wanda McDonald
Mike and Jennifer McGee
Brooke McKenney
Sherwood McKenney and Abby Mullin
Rita McLaughlin
Brandi (Newby) '02, M.B.A. '05 and
Nahum Meisner
Brandon Meserve '12 and
Katie Cirone '13, M.B.A. '13
Michael 's Short Cuts*
Matthew Michaud and Kathryn Leary
Michaud 's Welding
Natalie Mickewich '65
Beverly Miela
Justin Miller '08 🌻
Ming Lee Chinese Restaurant*
Rachael (York) '86 and Ronald Moholland
Harry, Jr. '89 and Cindy (LaBarge) Monti '89 🌻
Robert and Barbara Moody
Debra (Bernard) Moon '77, P '11
Francine (Larochelle) '77 and Mark Moore
James '93 and Constance Moore
Pamela Moore
Samantha Moore '13
Elaine Moore McNamara
Kevin and Rosemarie Moran
Raymond Morency '85
Yolanda Moreno
Nicholas Morgan
Ronald and Lynn Morin P '15, P '16
Colleen (Dyer) Morris '46
John and Bernadette Morrison
Sherry Morrison M.B.A. '11
Motor Supply Company*
Ron and Nancy Mount
Patrick Murphy and
Veronica Pasqualino-Murphy
Robert M.B.A. '04 and Catherine Nadeau
Rose (Bishop) '68 and Paul Napolitano
Gary and Gladcy Nelson
Matthew Newell
Brittany Newman '12
Michelle Newman
Scott '83 and Sheila (Vashon) Nielsen '86, M.B.A. '91
Scott '86 and Martha Nivus
John O 'Connor 🌻
Patricia O 'Connor
James O 'Dare
Steven '85 and Marsha (Gendreau) Oliveira '84, '91
James and Susan Oliver
Bryan M.S. '01 and Michelle (Pinkham)
Ouellette M.S. '10
J. Peter Owen '86
Jevon '04 and Joy (Ireland) Owens '06, M.B.A. '08
Michael and Jeannette Parker
Cheryl (Siekmann) Parkman '84
Frank Pasqualino
Kolby '10 and Courtney Peckham
Jenna Pederson
Nate and Lucy Pelsma
Joseph and Christine Perault
Thomas and Chere Perkins

Karen Perry-Thames '93 and Wesley Thames
David Pierrepont '70
Rolland Pierson
Robert '75 and Laurie Pietroski
Max and Michelle Pina
Michael Pingree '91, '92
Cameron and Gayle Pinkham
Catherine Planchart
The Pointe Afta*
Michael Poland '02
Doreen (Sturtevant) '89 and Lee Poulin
June Price '48
Jimmy Quirion '13, M.B.A. '14 and
Brittany Oxley '09
RAB Associates, LLC
Diana (Samchisen) '99, M.B.A. '01 and
Jeffrey Rafuse
Railroad Square Cinema*
Lisa Rancourt
Linda (Witham) '72 and Robert Ray
Jennifer (Wilbur) '88 and Kevin Reed
Patricia (Dow) M.S. '99 and Dennis Reeves
Remedy Salon and Spa*
Remmes Orthodontics, P.A.
Willard '58 and Kathleen Ribbons
Melissa Rice
Michael Riley
Sharon (Tyler) Ring '68
Rachel Rios
Hattie (Rood) '51 and Roderick Robinson
Michele Robinson
Janet (Souviney-Sirois) '86 and Peter Roderick
Brad M.B.A. '14 and Jessica (Wentworth)
Rodrigue '06, '10, M.B.A. '14
James and Paula Roldos
Louise Roming '09
Michael Ross '09
Richard '98 and Jennifer (Gagnon) Rotella
Joyce (Hunt) Rowe '54
Bob Rowell '49
Charles Rumsey
Timothy Russo
Sean and Kimberly Rutherford P '18
James '69 and Tammy Sandler
Deborah (Brown) '83 and Rick Saucier
Allan and Paula (Whitten) Saul
Christian Savage
Gayle Savage
Michael Sawyer '70
Nicholai Schlikin '69
Tara (Fredette) Schmitt '93
John and Michele Scoopo
Lee Seguin '11
Mounir and Stephanie Sekkat
Selah Tea*
Lori Shackley P '15
Shelby 's Deli*
Carol (Ellis) Shibley '90
Paul and Joan Shinay
Robert M.B.A. '94 and Margaret Shore
Sign of the Sun*
Barbara Small P '16
Leroy Small
Charles and Jessica Smialek
Hariph M.S. '80 and Virginia Smith
Rachel Smith
Sue-Ellen (Huntington) '77 and Charles Smith
Snack Shack*
Garrett Sock
Sock Marketing of Florida, Inc.
Sonny 's Pizza, Inc.*
Kathryn Soucy M.B.A. '93
James and JoHannah Speltz
Rurik '11 and Jodi (Gifford) Spence
David and Irene Starbird
Kelly Stevens

Hazel (Ryan-Bell) M.B.A. '90 and David Stevenson
 Studio 61 Hair & Skin Care Salon*
 Michele Sucy
 Kathleen Sullivan M.B.A. '99
 Tony '89 and Jill Sullivan
 Rhoda (Colcord) Sutfin '75
 sweetFrog*
 Emma Swinton
 Amanda Szala '99, M.B.A. '99
 Andrew Taddei, Jr.
 Cynthia (Blanchard) '71 and J. Michael Talbot
 James and Jane Talbot
 L. Tardif Jeweler*
 Louis and Kathleen Teixeira
 Anthony '90 and Gail Theberge
 The Thirsty Mule*
 Regan Thomas '01, '06
 Paul and Annie Thompson
 Craig and Linda Thulen
 G. Virgil and Peggy Tilton
 Joel Timberlake M.B.A. '14
 Michael '69 and Suzanne Tiner
 David Tirabassi '13
 Jeffrey and Carrie Tirrell
 TJ's Classic Billiards*
 Shane '96, M.B.A. '96 and Tricia (Bell) Trahan '97
 The Tropics Tanning Salon*
 Charlene (Chasse) '66 and Wilfred Turgeon
 Stephen and JoAnn Turner
 Twin Pines Family Medicine
 Gerard and Theresa Twohig
 Deborah (Grogan) Valdes '95
 Daniel '72 and Donna (Leblanc) Veilleux '72
 Michael Veilleux '02
 Phylliss (McLain) '03 and Peter Viets
 The Villager Restaurant*
 Stacy (Gilbert) '86 and Steven Viola
 David Wainwright M.B.A. '12
 Dennis and Chere Ware
 Jason and Stephanie Warren P '17
 Waterville House of Pizza*
 Wave Lengths Salon*
 James Wazlaw M.B.A. '91 and Mary Ellen Morgan Wazlaw
 Weeks & Sons Well Drilling
 Darcy M.B.A. '01 and Nancy (Pratt) White '83
 Lonnie and Cindy White
 Janet (LaMontagne) Whitney '76
 Wilder & Shea Counselors at Law
 Jeffrey Willette '95
 Robert '81 and Susan Willette
 Ramona Winn
 Dana Winslow '72
 Winslow Pharmacy*
 Winthrop Veterinary Hospital, P.A.
 Naomi (Poole) '99, M.B.A. '01 and Kevin Wiswell
 Victoria (Hall) '79 and Steven Wood
 Jimmie and Barbara (Lanman) Woodlee
 Natalie (Wood) '84 and Ernest Woodward
 Jim Worthington
 Jeffrey '92 and Renee Wright
 Cynthia (Dearborn) Yachanin '91
 Paul and Christine Young
 May Ronny Zeidman
 Tracey and Peter Zinck P '17

FACULTY & STAFF

Anonymous (5)
 Anonymous
 Diane Anderson
 Erin Baltes
 Emily Bell
 Susan Bell
 Debra Biche-Labbe
 Bonnie (Dyer) Buckmore '13
 Jennifer Buker
 Jamie Campbell P '18
 Nancy Charette
 Shannon Combar
 Donald Cragen M.B.A. '13
 Cheryl Daggett
 April Dehetre
 James Delorie M.B.A. '14
 Lisa M. Desautels
 Joe Donato
 Cathy Dumont M.B.A. '10
 Steven Dyer
 Thomas Edwards
 Amanda (Welch) Favreau
 Anthony Flye
 Beth Gibbs M.B.A. '93, P '12
 Peter Gilbert M.S. '78, P '99
 Kristin (Tormollan) Grant M.B.A. '13
 Myrtle (Kelly) Grindall '72
 Judith Hansen-Childers M.B.A. '96, M.S. '98, P '01, P '16
 Kerry Hoey
 Shonna Humphrey
 Nicholas Jewczyn
 Michelle Joler-Labbe
 Rebecca Kane P '19
 Jonathan Kent
 Eric Kruger
 Laurie (Gagnon) Lachance M.B.A. '92
 Rita LaChance P '09
 Darrin Lane
 Jason LaVerdiere
 Cindy Lepley
 Doug Lepley
 James Libby
 John Majewski
 Joseph Massey M.B.A. '11
 Jennifer McGee
 Philomena McPhee-Brown '69, M.S. '01
 Ellen McQuiston P '07
 Maryam Mermey
 Bob Moore '79
 Steve Moro
 Brittany Newman '12
 Terry Parlin
 James Parsons
 David Pease
 Jenna Pederson
 Corey Pelletier '04, M.B.A. '12
 James Raddatz
 Darlene Ratte '86, M.B.A. '88
 Christopher Rhoda '88, M.B.A. '89
 Melissa Rice
 Jessica (Wentworth) Rodrigue '06, '10, M.B.A. '14
 David Roussel '93
 Charles Rumsey
 Timothy Russo
 Joe Scozzafava
 Kerry Smart
 Kelly Stevens
 Roberta (Cross) Tibbetts '69, '71
 Jimmy Veino '10
 Dog Wallace
 Richard Whitmore
 Mikaela Ziobro M.S. '15

MEMORIAL DONATIONS


IN MEMORY OF DAVID CROWELL

Ray Albert
 Lawrence and Kerri Bates
 James and Michelle Beach
 Nancy (Hughes) M.S. '13 and William Bolton
 Donald and Carleen Cote
 Henry and Eleanor Crowell
 Larry '70, '74, M.S. '78 and Donna Davis
 Dianne (Fecteau) '89 and Steven Day P '15, P '16
 Frederick, II '87 and Cindy Denico
 The Fitzgibbon Family Trust
 Kenneth and Amber Haley
 Scott and Nicole (LaLiberte) Hamlin
 Tim and Alana Holt
 Frederick and Sharon Joncas
 Dianne Lajoie
 Richard and Kana Langlois
 Macpage LLC
 James Mahoney
 Eugene and Roxanna Martin
 Darren and Vanessa Matthews
 James O 'Dare
 Michael and Jeannette Parker
 Michele Pelletier M.S. '99
 PFG NorthCenter
 David Pickering
 Cameron and Gayle Pinkham
 Gregory and Dorothy Piper
 Dorcas Riley
 H. Allen H '08 and Dianne Ryan
 Arthur and Donna Ryder
 Allan and Paula (Whitten) Saul
 Adam and Bonnie Savage
 Joyce (Violette) Sawtelle
 Joel '04 and Shelly (Poulliot) Selwood '89
 Dorothy (Ward) Sullivan
 James Tims
 Jimmie and Barbara (Lanman) Woodlee



Thomas College has created this publication to recognize supporters of the College. In compiling this list as of June 30, 2015, we have attempted to list every individual, family, and business who has contributed to Thomas College. Any error on our part is completely unintentional.

Please contact the Advancement Office with any questions or concerns at 207.859.1167 or veinoj@thomas.edu.

*Denotes an in-kind gift
 H - Honorary Degree
 P - Parent(s) of Thomas student(s)
 Four Seasons Society Member



Alumni Giving to the Thomas Fund by Class Year

The strength of our community comes from your support.

1940s

Eleanor (Bailey) Foster '40, P'97, P'99
Cecile (Corbin) Ellis '41, P'64
Virginia (Waldron) Gallant '45
Lois (Mosher) Labelle '46
Colleen (Dyer) Morris '46
Susan (Crosby) Jacques '47
Norbert Kelley '48
June Price '48
Doris (York) Armstrong '49
Bob Rowell '49

1950s

Gerald Bickford '51
Hilda (Baldic) Bickford '51
George Henry '51
Hattie (Rood) Robinson '51
Marjorie (Hassett) White '51
Norma (Leighton) Giroux '52
Leo Arsenault '54
Joyce (Hunt) Rowe '54
Ralph Gilman '56
Roland Huard '57
Willard Ribbons '58
Joyce Davis '59
Philippe Hebert '59

1960s

Anonymous
Marie Deeb '62
Lucille (Fortin) Hawkes '63, '65
Judith Ellis '64
Nancy (Lemar) Marston '64
Mary (Smith) Mead '64
Lucille (Fortin) Hawkes '63, '65
Cynthia (Magoon) Laiho '65
Natalie Mickewich '65
Dolores (Witham) McBain '66
David Mead '66
Charlene (Chasse) Turgeon '66
Shirley (McCarron) Ashmore '67
James Fitton '67
Richard Holt '67
Robert Bolduc '68
Ronald Knox '68
Valmond Landry '68
Rose (Bishop) Napolitano '68
Sharon (Tyler) Ring '68
David Hawkes '69
Jo Ann (Granata) McLellan '69
Peter McLellan '69
Philomena McPhee-Brown '69, M.S. '01
Suzanne (Morin) Ronan '69, P'08
James Sandler '69
Nicholai Schlikin '69
Roberta (Cross) Tibbetts '69, '71
Michael Tiner '69

1970s

Anonymous
Linda (Weymouth) Bolduc '70
Sonia (Michaud) Butler '70, '83
Lawrence Davis '70, '74, M.S. '78
Gerard Dennison '70, M.B.A. '86
John Marotta '70

David Pierrepont '70
Michael Sawyer '70
Richard Grindall '71
Susan Gage Knedler '71
Doris (Therriault) Little '71
Roland Maheux '71
Janet (Mackay) Parkhurst '71
Cynthia (Blanchard) Talbot '71
Patricia (Mathieson) Tatham '71, M.S. '99
Roberta (Cross) Tibbetts '69, '71
John Callahan '72
William Dubay '72
Myrtle (Kelly) Grindall '72
Mary (Dill) Handfield '72
Linda (Witham) Ray '72
Stephen Reid '72
David Tibbetts '72
Michael Vashon '72
Daniel Veilleux '72
Donna (Leblanc) Veilleux '72
Dana Winslow '72
Kathy (Clifford) Buck '73
Kurt Gilbert '73
Sharon (Redlevske) Lambert '73, M.S. '99
Douglas Tatham '73
Marjorie (Waynen) Concannon '74
Bruce Dantzler '74
Lawrence Davis '70, '74, M.S. '78
Michael Deschaine '74, P'01
Pauline (Harding) Gorham '74
Romance Hackett '74
Paul Magro '74
Pauline Bergeron-Flood '75
Brenda (Pomerleau) Breton '75
Pamela (Leighton) Dantzler '75
Erik Endresen '75
Robert Pietroski '75
Rhoda (Colcord) Sutfin '75
Lois (Brown) Ayotte '76
Michelle (Jandreau) Cahill '76, '78
Carolyn (Carpenter) Colpitts '76
JoEllen (Cuthbert) Cottrell '76
Wayne Gove '76
Debra (Sprague) Lovelady '76
Carol (Ogden) Moore '76
David Ronan '76, M.B.A. '82, P'08
Warren Spencer '76, '78
Janet (LaMontagne) Whitney '76
Conrad Ayotte '77, H'98
Bruce Bachelder '77
Terry Ann (Bernard) Clukey '77
Paul Cottrell, Jr. '77
Michael Fitton '77
Amber (Hall) Fournier '77
Ralph Gamache '77
Marc Gendron '77
Katrina (Young) Gove '77
Lucy (Webb) Hardy '77
Christopher Jones '77
Kevin Joseph '77
Karen King '77
Patricia (DeRoch) Libby '77
Paula (Ramos) McGeary '77
Thomas McGeary '77
Debra (Bernard) Moon '77, P'11
Francine (Larochelle) Moore '77

Cyndy Kane Olson '77
Joanne (Cough) Smith '77
Sue-Ellen (Huntington) Smith '77
Jane (Wilson) Bickford '78, P'15
Michelle (Jandreau) Cahill '76, '78
Lawrence Davis '70, '74, M.S. '78
Carolyn (McFarland) Filauro '78
Paula (Coolong) Gendron '78
Gary Goldman '78
Charlie Greer '78
Carl Hamilton M.S. '78
(Ann) Nancy Hill '78
Christopher Holmes '78
Jane (Etchie) Kennedy '78
David Lucius '78
Jeffrey Peters '78
David Sedler '78
Warren Spencer '76, '78
Karen (McLean) Archer '79
Nancy (Gilbert) Bodine '79, M.S. '83
Sandra (Mooers) Bouchard '79
Thomas Carey '79
Alice (Reeves) Darlington '79
Joseph Gasbarrone '79
John Jensen '79
Bob Moore '79
Steven Tilley '79, M.B.A. '15
Jeffrey Winchenbach '79
Kathie (Krikorian) Winchenbach '79
Victoria (Hall) Wood '79
Robert Wright '79

1980s

Bryan Barstow '80
Wendy (Iwans) Bean '80, '88
Matthew Bodine '80
Rebecca (Hanson) Boulanger '80
Linda (Kura) D'Avolio '80, '82
John Donilon '80
Maryanne Gawlinski '80
Kathleen Kelly M.S. '80
Kelly (Bell) Lloyd '80
Anne (Butler) Rowe '80, P'14, P'15
Russell Schmelzer, II '80
Barbara (Talbot) Sinclair '80
Hariph Smith M.S. '80
Richard Spellman M.S. '80
Linda Towle '80, M.B.A. '87
Wayne Winston '80
Clayton Churchill '81
Kelly (Mathisen) Couture '81
Craig Joseph '81
Michael Laverdiere '81
Kent Macleod '81
Richard Slingsby '81
Robert Willette '81
John Andrews '82
Michael Burnham '82
Robert Clark '82
Linda (Kura) D'Avolio '80, '82
LaRue Hamilton '82
Brenda (Lapointe) Lyons '82, '03, M.B.A. '08
David Ronan '76, M.B.A. '82, P'08
Nancy (Gilbert) Bodine '79, M.S. '83
Sonia (Michaud) Butler '70, '83
Periann (Smith) Carl '83

Michael D'Avolio '83
 Colleen (Payne) Eugley '83, P'15
 Douglas Eugley '83, P'15
 Heidi (Varnam) Hall '83
 Arnold Hanscom '83, '86
 Cathi Lee '83
 Sandra Lovley '83
 Scott Nielsen '83
 Nancy (White) Pratt '83
 Deborah (Brown) Saucier '83
 Karen (Hebert) Van Orman '83, M.B.A. '87
 Michael Albano '84
 Thomas Bullock '84
 Cynthia (Kniffin) Gilcott '84, P'13
 John Hall '84
 Gregory Marken '84
 James Marotta '84
 Marsha (Gendreau) Oliveira '84, '91
 Cheryl (Siekmann) Parkman '84
 David Rancourt '84
 Albert Swallow, III '84
 Natalie (Wood) Woodward '84
 William Brooke M.B.A. '85
 Robert Harriman M.B.A. '85
 Charles Harris, II '85
 Denise (Guenette) Harris '85
 Raymond Morency '85
 Steven Oliveira '85
 Matthew Babson '86
 Joan (Dow) Bickford '86
 Gerard Dennison '70, M.B.A. '86
 Susan (Vajs) Gordon '86
 David Grenier M.B.A. '86
 Lisa (Thibault) Hachey '86
 Michael Hachey '86, M.B.A. '97
 Arnold Hanscom '83, '86
 Donald Higgins '86
 Sandra (Strout) LaRose '86
 Rachael (York) Moholland '86
 Sheila (Vashon) Nielsen '86, M.B.A. '91
 Scott Nivus '86
 J. Peter Owen '86
 Robert Potter '86
 Janet (Souviney-Sirois) Roderick '86
 Stacy (Gilbert) Viola '86
 Frederick Denico, II '87
 Lorraine Fellows '87
 Linda Towle '80, M.B.A. '87
 Karen (Hebert) Van Orman '83, M.B.A. '87
 Paula-Jo (Warren) Varney '87
 Wendy (Iwans) Bean '80, '88
 Brian Bernatchez '88
 Katherine Cahall '88, '91, M.B.A. '95
 Robert Callahan '88, M.B.A. '96
 Timothy Clark '88, M.B.A. '95
 Chester Horne, II '88
 Douglas Long '88
 Germaine Orloff M.B.A. '88
 Jennifer (Wilbur) Reed '88
 Christopher Rhoda '88, M.B.A. '89
 Kelley (Benoit) Shimansky '88, '89
 Douglas Wilson '88
 Jennifer (Harmon) Wilson '88
 Jack Brassell '89
 Carolyn (Drouin) Callahan '89
 Dianne (Fecteau) Day '89, P'15, P'16
 Tina (Main) Dewsnap '89
 Tina (Bickford) Easler '89
 Nancy (Ayoob) Elias '89
 Edgar Guzman '89
 Rodrigo Guzman '89
 Eileen (McGrath) Long '89
 Cindy (LaBarge) Monti '89
 Harry Monti, Jr. '89
 Roberta (Julien) O'Brion '89
 Doreen (Sturtevant) Poulin '89
 Christopher Rhoda '88, M.B.A. '89

Shelly (Poulliott) Selwood '89
 Jim Shimansky '89
 Kelley (Benoit) Shimansky '88, '89
 Tony Sullivan '89

1990s

Anonymous (5)
 Paul Anderson M.B.A. '90
 Joanne (Clifford) Bean M.B.A. '90
 Joan Coleman M.B.A. '90
 Jill (Babcock) Lavoie '90
 James Murton M.B.A. '90
 Christine (Campbell) Perkins '90
 Carol (Ellis) Shibley '90
 Hazel (Ryan-Bell) Stevenson M.B.A. '90
 Anthony Theberge '90
 Katherine Cahall '88, '91, M.B.A. '95
 Jonathan Carr '91, M.B.A. '91
 Jennifer (Charron) Hight '91
 Jim Lemieux '91, '94, M.B.A. '97
 Kim (Nadeau) Lindlof '91
 Valerie McCarty '91
 Sheila (Vashon) Nielsen '86, M.B.A. '91
 Marsha (Gendreau) Oliveira '84, '91
 Michael Pingree '91, '92
 Scott Plowman '91, P'17
 James Wazlaw M.B.A. '91
 Cynthia (Dearborn) Yachanin '91
 Robert Adams '92
 Julianne (Fabian) Benecke '92
 Veronica Beriau '92
 Laurie (Shores) Bilodeau '92
 Stephen Brunetti '92
 James Cough, Jr. M.B.A. '92
 Christa (Haskell) Fairbanks '92
 Kellie (James) Guarino '92, M.B.A. '98
 Michael Guarino '92, M.B.A. '92
 Richard Gutmacher M.B.A. '92
 Ronald Holmes M.B.A. '92
 Lisa (Shores) Jacques '92
 Edward Johnson '92
 Laurie (Gagnon) Lachance M.B.A. '92
 Michael Payne '92
 Michael Pingree '91, '92
 Barry Rock '92, '94
 Michael Salisbury '92
 Todd Smith '92, M.B.A. '99
 Jeffrey Wright '92
 Anthony Amero '93
 Christopher Bilodeau '93
 Dean Bither M.B.A. '93
 Nancy (Willette) Chamberlain M.B.A. '93
 James Eastlack '93
 Troy Kendrick '93
 Brian King '93
 Gregory Korn '93
 Cindy (McDaniel) Lee '93
 James Moore, Jr. '93
 Karen Perry-Thames '93
 David Roussel '93
 Tara (Fredette) Schmitt '93
 Kathryn Soucy M.B.A. '93
 Rick Whalen '93
 Deborah Begin-Wyman '94, '96, M.B.A. '98
 Derek Daigneault '94
 William Flaherty M.B.A. '94
 William Fournier '94
 Peter Gerow '94
 Jo-Anne (Doane) Harrell '94
 Mike Johnson '94
 George Keim '94
 Jim Lemieux '91, '94, M.B.A. '97
 Nancy (Briggs) Marshall M.B.A. '94
 Barry Rock '92, '94
 Robert Shore M.B.A. '94
 Tammy (Martin) Weston '94

Mona Albee '95
 Erica (Martin) Albert '95
 John Brier M.B.A. '95
 Katherine Cahall '88, '91, M.B.A. '95
 Rosemary Caporale '95
 Timothy Clark '88, M.B.A. '95
 James Cosgrove '95
 Cheryl (Wakeham) Flewelling '95, M.B.A. '09
 Rachel (Pomerleau) Frost '95
 Diane (Plante) Gerow '95
 Melissa (Thomson) Higgins '95
 Julie (Parlin) Keim '95
 Lola (Guerrette) Korn '95
 Daniel Littlefield M.B.A. '95
 Karen Madsen M.B.A. '95
 Deborah (Grogan) Valdes '95
 Jeffrey Willett '95
 Deborah Begin-Wyman '94, '96, M.B.A. '98
 Tammy (Pelletier) Brunetti '96
 Robert Callahan '88, M.B.A. '96
 Robert Frost '96
 Judith Hansen-Childers M.B.A. '96, M.S. '98, P'01, P'16
 Sharon (Hall) Holmes M.B.A. '96
 Harry Lanphear, III M.B.A. '96
 Keith Morneault '96, M.B.A. '96
 Sean Trahan '96, M.B.A. '96
 Shane Trahan '96, M.B.A. '96
 Susan (Quirrion) Clary M.B.A. '97
 Michael Hachey '86, M.B.A. '97
 Sonya (Martin) Henderson '97, '99, M.B.A. '00
 Laura (Simpson) Hudson '97, '00, M.B.A. '02
 Jim Lemieux '91, '94, M.B.A. '97
 Jacquelyn Lewis M.B.A. '97
 Marsha Merryman '97
 Tricia (Bell) Trahan '97
 Deborah Begin-Wyman '94, '96, M.B.A. '98
 Bruce Daniels M.B.A. '98
 Kellie (James) Guarino '92, M.B.A. '98
 Judith Hansen-Childers M.B.A. '96, M.S. '98, P'01, P'16
 Christopher Parsons '98
 Richard Rotella '98
 Christopher Batson M.B.A. '99
 Lenore (O'Connell) Boles M.S. '99
 Christina Cracolici '99
 Shirley (Brooks) Flaherty-Browne '99, M.B.A. '08
 Tyler Graves '99
 Erica Guay '99
 Sonya (Martin) Henderson '97, '99, M.B.A. '00
 Sharon (Redlevske) Lambert '73, M.S. '99
 Marilyn Leimbach '99
 Michele Pelletier M.S. '99
 Diana (Samchisen) Rafuse '99, M.B.A. '01
 Patricia (Dow) Reeves M.S. '99
 Todd Smith '92, M.B.A. '99
 Kathleen Sullivan M.B.A. '99
 Amanda Szala '99, M.B.A. '99
 Patricia (Mathieson) Tatham '71, M.S. '99
 Naomi (Poole) Wiswell '99, M.B.A. '01

2000s

Anonymous (4)
 Amylynn (Smith) Bibeau '00
 David Fletcher '00
 Nancy (Alexander) Fox '00, M.B.A. '02
 Sarah (Anderson) Hedrick M.B.A. '00
 Sonya (Martin) Henderson '97, '99, M.B.A. '00
 Carole (Coons) Hickey '00
 Laura (Simpson) Hudson '97, '00, M.B.A. '02
 Annette (Choquette) Lepkowski '00
 Kathryn (Eater) Linkletter '00
 Danielle (Bolduc) Marquis '00
 Matthew Marquis '00
 Stephanie (Talbot) McNeal '00
 Lisa (Burns) Stang M.B.A. '00
 Michael Stang M.B.A. '00
 Carol Carew M.B.A. '01

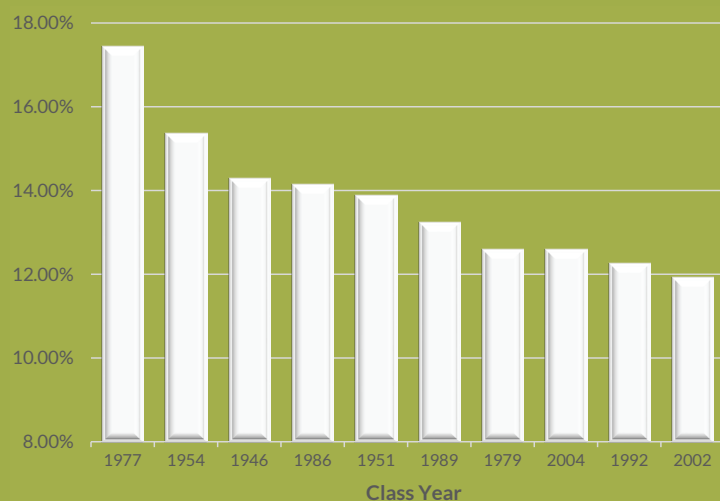
Gregory McNeal M.B.A. '01
 Philomena McPhee-Brown '69, M.S. '01
 Jared O'Roak '01
 Mary (Mersereau) O'Roak '01
 Bryan Ouellette M.S. '01
 Karin (Burdin) Parsons '01
 Bradley Pelletier '01, M.B.A. '07
 Diana (Samchisen) Rafuse '99, M.B.A. '01
 Regan Thomas '01, '06
 Darcy White M.B.A. '01
 Naomi (Poole) Wiswell '99, M.B.A. '01
 Joanne Allen '02, M.B.A. '02
 Barry Bean '02, '08
 Ryan Conley '02
 Susan (Conant) Cook M.B.A. '02
 Brenda (Glidden) Drummond M.B.A. '02
 Dwaine Drummond M.B.A. '02
 David Erb, Jr. M.B.A. '02
 Nancy (Alexander) Fox '00, M.B.A. '02
 Laura (Simpson) Hudson '97, '00, M.B.A. '02
 Paula (Wentworth) Kimball-Vigue '02, '07, M.S. '15
 Lucas Levesque '02
 Brandi (Newby) Meisner '02, M.B.A. '05
 Ian Moriarty '02
 Amanda (Knowlton) Pelletier '02, M.B.A. '06
 Michael Poland '02
 Nikolas Ray '02, M.B.A. '07
 Robert Touchette '02
 Michael Veilleux '02
 Brenda (Bragdon) Corthell M.B.A. '03
 Richard Forsley '03, M.B.A. '06
 Ramona (Foster) Freeman M.B.A. '03
 Vicki (Bell) Lizotte M.B.A. '03
 Jefferson Longfellow M.B.A. '03
 Brenda (Lapointe) Lyons '82, '03, M.B.A. '08
 Phylliss (McLain) Viets '03
 Marisa (Ellsworth) Alcaraz '04
 John Bloemendaal M.B.A. '04
 David Boomhour '04
 Benjamin Fairclough '04
 Linda (Foster) Gascoyne '04
 Joshua LaRoche '04
 Amy (Young) Levesque '04
 Crichton McKenna '04, M.S. '09
 Robert Morin '04, M.B.A. '06
 Scott Mullen '04
 Robert Nadeau M.B.A. '04
 Jevon Owens '04
 Corey Pelletier '04, M.B.A. '12
 Jennifer (DeRoche) Pelletier '04, M.B.A. '14
 Eric Reddy '04
 Maren (Madore) Reddy '04
 Joel Selwood '04
 Lucas Allen '05

Elizabeth (Pilsbury) Bridger '05
 Kathleen (Whitson) Delcourt M.S. '05, M.S. '08
 Darcy (Thomas) Dumont '05, M.B.A. '14
 Jennifer (Shelley) LaCroix '05
 Alesia (Dalton) LaRoche '05
 Jonathan McDonald '05, M.B.A. '05
 Brandi (Newby) Meisner '02, M.B.A. '05
 Laurie (Pottle) Bourgoin M.B.A. '06
 Shawn Cote '06
 Derek Dumont '06, M.B.A. '06
 Jonathan Forsley '03, M.B.A. '06
 Robert Morin '04, M.B.A. '06
 Joy (Ireland) Owens '06, M.B.A. '08
 Amanda (Knowlton) Pelletier '02, M.B.A. '06
 Jessica (Wentworth) Rodrigue '06, '10, M.B.A. '14
 Regan Thomas '01, '06
 Walter Carlow M.B.A. '07, P'07
 Robert Gagnon '07, M.B.A. '10
 Kari Grant-Gagnon '07, M.B.A. '09
 Paula (Wentworth) Kimball-Vigue '02, '07, M.S. '15
 Amy (Khuu) McKenna M.S. '07
 Bradley Pelletier '01, M.B.A. '07
 Nikolas Ray '02, M.B.A. '07
 Andrea Rhoda M.S. '07
 John Scott M.B.A. '07
 Peter Theriault M.B.A. '07
 Barry Bean '02, '08
 James Boissonneault '08, M.B.A. '08
 Charles Calkins M.B.A. '08
 Kathleen (Whitson) Delcourt M.S. '05, M.S. '08
 Shirley (Brooks) Flaherty-Browne '99, M.B.A. '08
 Seven (Lathrop) Grenier M.B.A. '08
 Ben Kenney '08, M.B.A. '15
 Brenda (Lapointe) Lyons '82, '03, M.B.A. '08
 Justin Miller '08
 Joy (Ireland) Owens '06, M.B.A. '08
 Cheryl (Wakeham) Flewelling '95, M.B.A. '09
 Katherine (St. George) Gagner '09
 Kari Grant-Gagnon '07, M.B.A. '09
 Joshua Kane '09
 Justine (Ramsdell) Kenney '09, M.B.A. '15
 Crichton McKenna '04, M.S. '09
 Brittany Oxley '09
 Louise Roming '09
 Michael Ross '09
 Jennifer (Higgins) Veino '09, M.B.A. '12

2010s

Anonymous (3)
 Cathy Dumont M.B.A. '10
 Robert Gagnon '07, M.B.A. '10
 Benjamin Grant '10
 Nathan Marquis '10, M.B.A. '13
 Zlatko Necevski M.B.A. '10

Michelle (Pinkham) Ouellette M.S. '10
 William Oxford '10, M.B.A. '10
 Kolby Peckham '10
 Jessica (Wentworth) Rodrigue '06, '10, M.B.A. '14
 Jimmy Veino '10
 Alexandra Kriegel '11, M.B.A. '12
 Yunqi Liu M.B.A. '11
 Joseph Massey M.B.A. '11
 Sherry Morrison M.B.A. '11
 Lee Seguin '11
 Rurik Spence '11
 Jarod Deanis '12, M.B.A. '14
 Tanya (Berry) Deanis '12
 Alexandra Kriegel '11, M.B.A. '12
 Brandon Meserve '12
 Brittany Newman '12
 Corey Pelletier '04, M.B.A. '12
 Kelly (Wood) Smith M.S. '12
 Jennifer (Higgins) Veino '09, M.B.A. '12
 David Wainwright M.B.A. '12
 Nancy (Hughes) Bolton M.S. '13
 Amanda Brooks '13
 Bonnie (Dyer) Buckmore '13
 Katie Cirone '13, M.B.A. '13
 Donald Cragen M.B.A. '13
 Scott Dumas '13
 Samuel Fisher '13
 Kristin (Tormollan) Grant M.B.A. '13
 Nathan Marquis '10, M.B.A. '13
 Samantha Moore '13
 Jimmy Quirion '13, M.B.A. '14
 Courtney Rustemeyer '13, M.B.A. '13
 David Tirabassi '13
 Javier Abascal Carrasco M.B.A. '14
 Timothy Brosnahan '14
 Jacob Darveau '14, M.B.A. '15
 Jarod Deanis '12, M.B.A. '14
 James Delorie M.B.A. '14
 Darcy (Thomas) Dumont '05, M.B.A. '14
 Teresea Hayes M.B.A. '14
 Jordan Hoyt '14
 Susan Moore M.S. '14
 Jennifer (DeRoche) Pelletier '04, M.B.A. '14
 Jimmy Quirion '13, M.B.A. '14
 Brad Rodrigue M.B.A. '14
 Jessica (Wentworth) Rodrigue '06, '10, M.B.A. '14
 Joel Timberlake M.B.A. '14
 Nicholas Barish '15
 Jacob Darveau '14, M.B.A. '15
 Ben Kenney '08, M.B.A. '15
 Justine (Ramsdell) Kenney '09, M.B.A. '15
 Paula (Wentworth) Kimball-Vigue '02, '07, M.S. '15
 Steven Tilley '79, M.B.A. '15
 Mikaela Ziobro M.S. '15



By giving, these top ten classes helped Thomas achieve an 8.3% alumni participation rate.

Thank you!



Snapshots of the Past Year



The 2014-2015 academic year brought many advancements and changes to our College. The increase in student population and the growing need for space brought about the opening of two of the largest projects Thomas College has ever completed.

The Henry and Ellen Hinman Hall provides housing for 108 first-year students. The Harold Alfond Academic Center houses classrooms, a state-of-the-art library, the H. Allen Ryan School of Business, Jeanie's Cafe', and faculty offices.



(L) Celebration of the *Dream. Transform. Achieve.* Campaign - the largest campaign in the College's history.

(R-Top) Thomas added Malawi, Egypt, South Sudan, Guinea, Germany, and Mexico to the Hall of Flags.

(R-Bottom) Faculty and staff show their support for Breast Cancer Awareness Month.





(L) The Professional and Career Development Office hosted a very successful Career Fair in March 2015. Students and alumni connected with potential future employers.

(Below) Commencement 2015 was the largest commencement in the history of Thomas College. Just under 200 graduates walked across the stage with over 2,000 family and friends there to congratulate them on their successes.

Commencement speaker and Honorary Degree recipient Bill Alford told students, "We know you are ready to take on the world, as big or as small as that may be."



(L) Thomas hosted the first Annual Dirty Dog Mud Run with more than 300 students, alumni, staff and community members participating.

(R) Players register for the 2nd Annual Terrier Tee-Off at the Waterville Country Club in June.





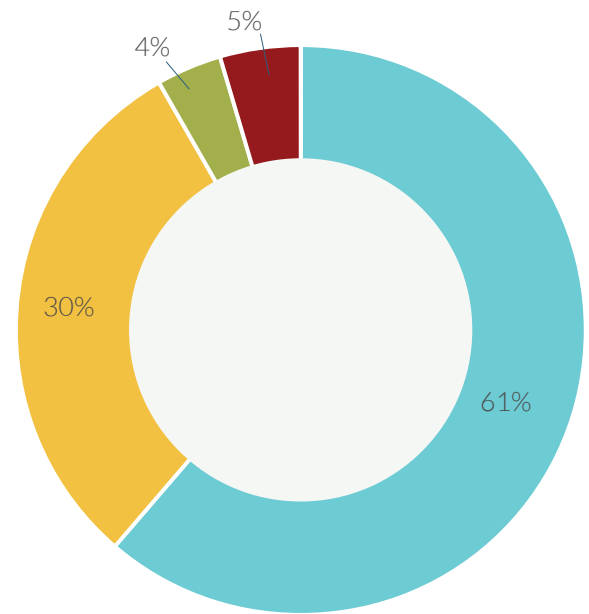
Financial Statements 2015

Statement of Financial Position

	6/30/2015*	6/30/2014
Assets		
Current Assets	\$17,465,542	\$ 17,197,154
Non-Current Assets	50,945,287	48,095,792
Total Assets	\$68,410,829	\$ 65,292,946
Liabilities		
Current Liabilities	\$ 3,921,412	\$ 5,105,564
Non-Current Liabilities	16,527,360	14,356,254
Total Liabilities	\$20,448,772	\$ 19,461,818
Net Assets		
Unrestricted Net Assets	\$ 35,769,424	\$ 33,383,776
Temporarily Restricted Net Assets	4,043,664	4,492,438
Permanently Restricted Net Assets	8,148,969	7,954,914
Total Net Assets	\$47,962,057	\$ 45,831,128
Total Liabilities and Net Assets	\$68,410,829	\$ 65,292,946

FY'15 Revenues

Tuition & Fees
 Sales & Service of Auxiliary Enterprises
 Contributions/Endowment Earnings
 Other Sources



* Fiscal year 2015 Unaudited



FY'15 Expenses

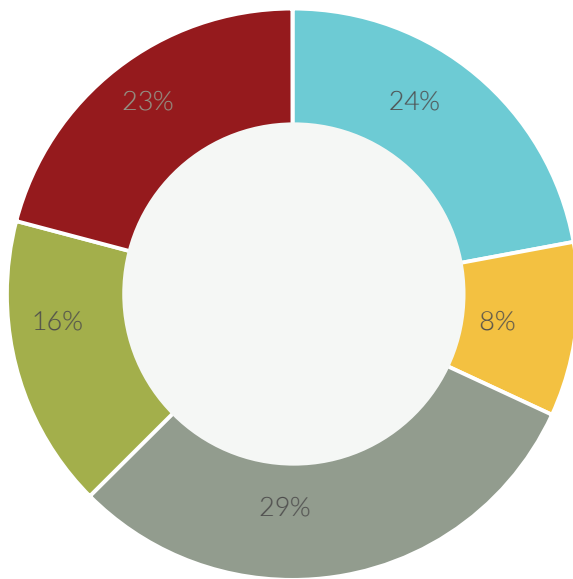
Instruction

Academic Support

Student Services

Institutional Support

Auxiliary Enterprises



Statement of Activities

Operating Activities

	6/30/2015*	6/30/2014
Tuition & fees	\$10,602,990	\$ 10,395,479
Sales & service of auxiliary enterprises	5,248,449	5,156,648
Contributions	93,523	41,827
Government grants	432,167	399,981
Investment income	110,399	203,481
Endowment utilized for operation	315,527	296,937
Other sources	234,064	172,897
Assets released from restriction	361,191	290,334
	<u>\$ 17,398,310</u>	<u>\$ 16,957,584</u>

Operating Expenses & Losses

Instruction	\$ 4,140,439	\$ 3,692,269
Public service	20,068	17,976
Academic support	1,440,981	1,630,384
Student services	4,981,371	5,124,717
Institutional support	2,721,684	2,775,822
Auxiliary enterprises	3,866,044	3,493,471
	<u>\$ 17,170,587</u>	<u>\$ 16,734,639</u>

Changes in Net Assets from Operating Activities

	<u>\$ 227,723</u>	<u>\$ 222,945</u>
--	-------------------	-------------------

* Fiscal Year 2015 Unaudited



Save the date! Register at thomas.edu/hf2015



Homecoming & Family Weekend October 16-18



180 West River Road, Waterville, ME 04901

www.thomas.edu